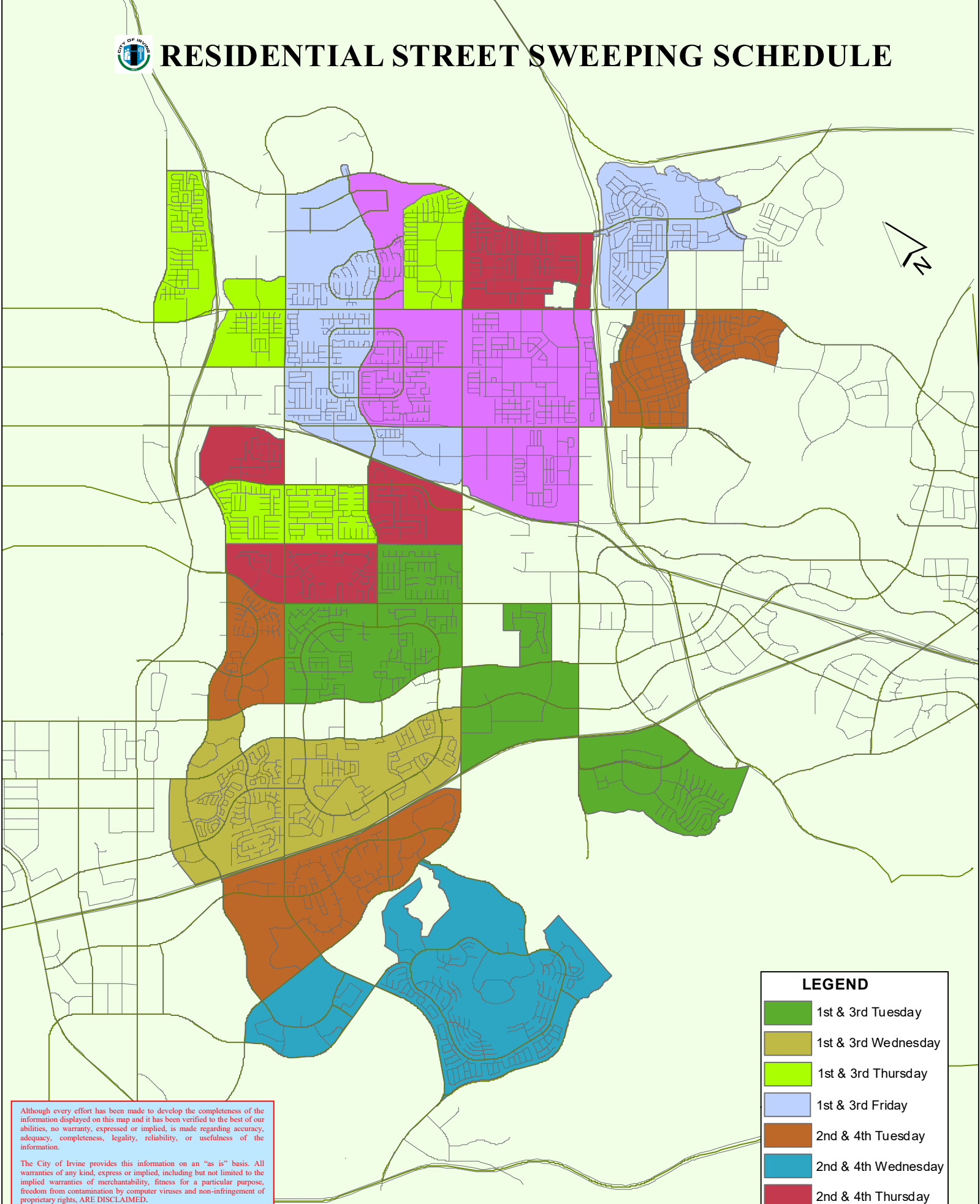




RESIDENTIAL STREET SWEEPING SCHEDULE



LEGEND

- 1st & 3rd Tuesday
- 1st & 3rd Wednesday
- 1st & 3rd Thursday
- 1st & 3rd Friday
- 2nd & 4th Tuesday
- 2nd & 4th Wednesday
- 2nd & 4th Thursday
- 2nd & 4th Friday

Although every effort has been made to develop the completeness of the information displayed on this map and it has been verified to the best of our abilities, no warranty, expressed or implied, is made regarding accuracy, adequacy, completeness, legality, reliability, or usefulness of the information.

The City of Irvine provides this information on an "as is" basis. All warranties of any kind, express or implied, including but not limited to the implied warranties of merchantability, fitness for a particular purpose, freedom from contamination by computer viruses and non-infringement of proprietary rights, ARE DISCLAIMED.

*** CITY OF IRVINE - STREET SWEEPING SCHEDULE - PUBLIC STREETS ONLY**
For sweeping schedules on private streets, please contact your respective Homeowner's Association.