

An overview of the trends shaping Irvine today.

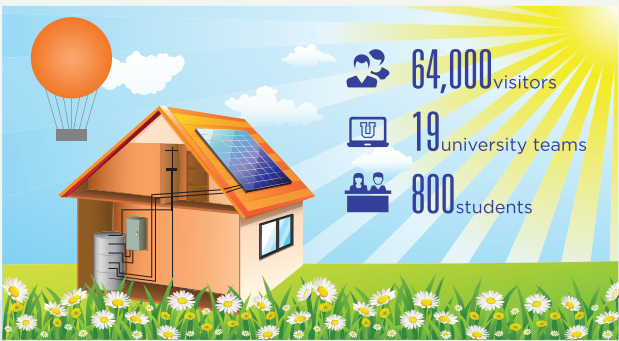


IRVINE SNAPSHOTS



Shady Canyon in Irvine

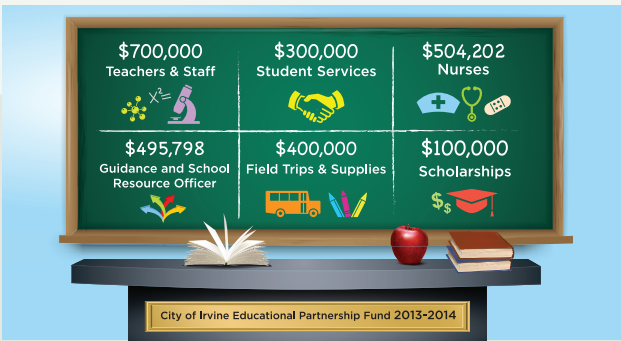
U.S. DEPARTMENT OF ENERGY SOLAR DECATHLON COMES TO IRVINE



The Solar Decathlon, held at the Orange County Great Park last October, attracted 64,000 people to the eight-day event. The Solar Decathlon was comprised of 19 university teams and 800 students who designed, built, and showcased innovative, fully functioning, and sustainable houses. This event returns to the Great Park in October 2015.

Source: City of Irvine — Public Information Office

IRVINE SUPPORT OF SCHOOLS



The City provides \$8.5 million in direct and indirect support to public schools serving Irvine students. This includes \$2.5 million in Educational Partnership Funds, a Measure BB voter-approved grant program. The Educational Partnership Fund enhances academic and health programming for Irvine students grades K-12.

Source: City of Irvine — City Managers Office

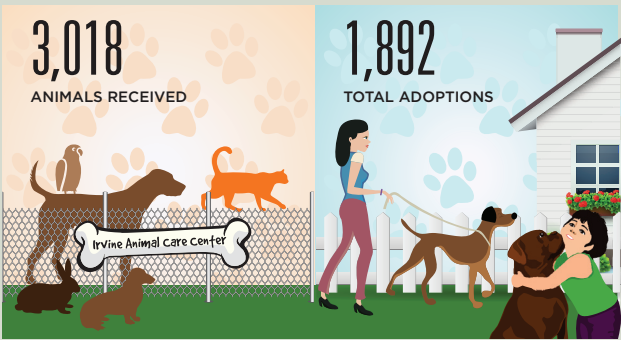
IRVINE NAMED BEST-RUN CITY



The financial news and opinion website 24/7 Wall St. named Irvine the *Best-Run City* among America's largest 100 cities in its 2014 best-of list.

Source: 24/7 Wall St.

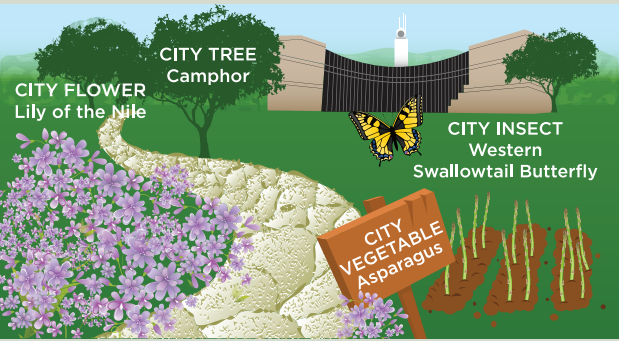
IRVINE ANIMAL CARE CENTER ADOPTIONS



In 2013, the Irvine Animal Care Center received 3,018 animals, of which 1,892 were adopted. Of the remaining animals, 480 were lost pets returned to their owners and 511 were sent to rehabilitators and/or placed in foster care.

Source: City of Irvine — Community Services Department

DID YOU KNOW...



Irvine has a City Tree, the Camphor Tree; a City Flower, Lily of the Nile; a City Insect, the Western Swallowtail Butterfly; and a City Vegetable, the Asparagus.

Source: City of Irvine — Public Information Office

IRVINE EMERGENCY RADIO STATION 1640 AM

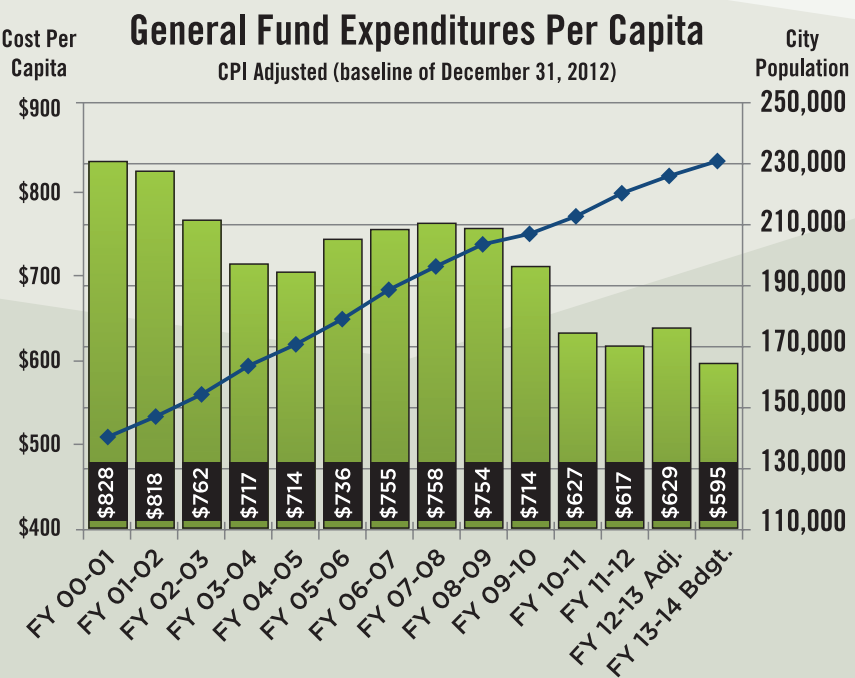


The City operates and maintains a 24-hour, 7-day emergency radio station. Real-time emergency information, including evacuations, road closures, emergency services and shelter locations during natural or other types of disasters are provided to motorists and residents.

Source: City of Irvine — Public Safety Department

GOLD STANDARD

The Gold Standard is an illustration of the City’s commitment to fiscal responsibility that reflects expenditures on a per capita basis. There has been a 28% decline in per capita costs in the last 14 years.



Source: City of Irvine — Fiscal Year 2013-14 Adopted General Fund Budget

CONTACT INFORMATION

EMAIL: snapshots@cityofirvine.org VISIT: cityofirvine.org/snapshots CALL: 949-724-6000

Since its incorporation in 1971, the City of Irvine has become a nationally recognized city, with a population of 242,651, spans 66 square miles and is recognized as one of America’s safest and most successful master-planned urban communities. Top-rated educational institutions, an enterprising business atmosphere, sound environmental stewardship, and respect for diversity all contribute to Irvine’s enviable quality of life. This family-friendly city features more than 16,000 acres of parks, sports fields and dedicated open space and is the home of the Orange County Great Park – the first great metropolitan park of the 21st century. For more information, please visit cityofirvine.org.