

IRVINE FINE ARTS CENTER

# Art AT HOME

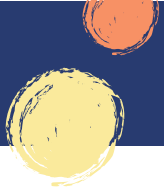
## Recycled Egg Carton Spring Wreath



### *Supplies needed:*

- Cardboard (or round paper plate)
- Egg cartons (white or light colored)
- Acrylic paint: yellow, pink, purple, white, and green
- Water cup
- Scissors
- Elmer's Glue  
Optional: Hot glue gun (adults only!)
- Ribbon





# Recycled Egg Carton Spring Wreath

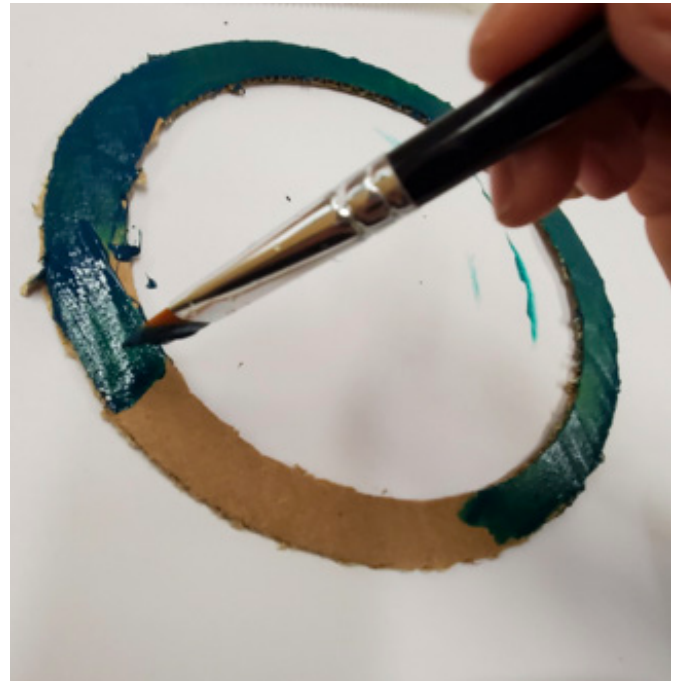


## Step 1

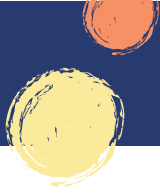


- Cut a ring out of cardboard or paper plate.

## Step 2



- Paint the ring green.



# Recycled Egg Carton Spring Wreath



## Step 3



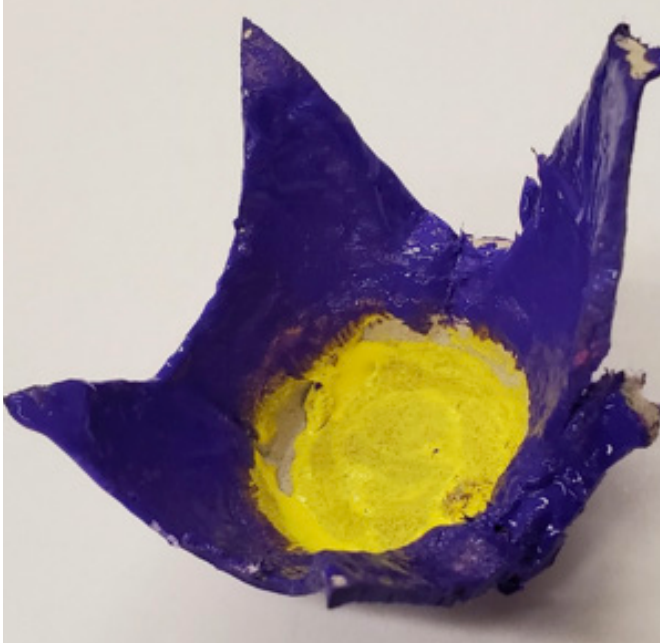
- Cut apart egg holders from the carton and trim off the excess on the edges. These will be your flowers for your wreath.

## Step 4



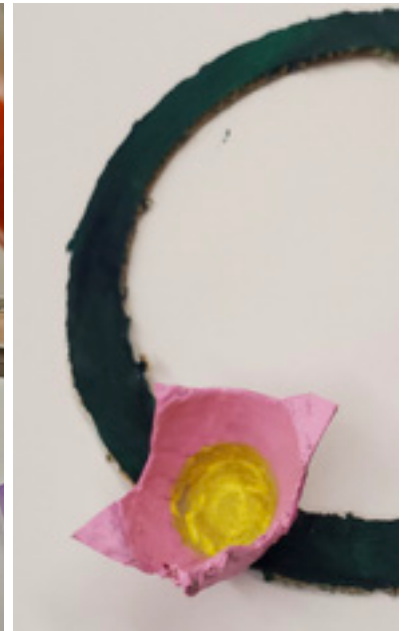
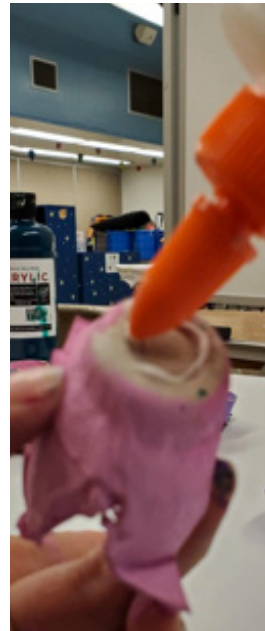
- Paint the center of each flower yellow. Allow to dry.

## Step 5



- Paint the inside and outside of the flowers pedals pink and purple.

## Step 6



- Once the flowers have dried, you can use Elmer's glue or a hot glue gun to attach the flowers onto the green ring. You can glue on as many flowers as you like.



## Step 7



- Optional: use ribbon to top off your wreath with a bow.