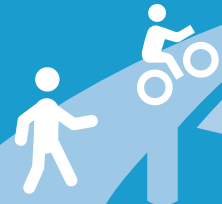




Jamboree Pedestrian Bridge Feasibility Study



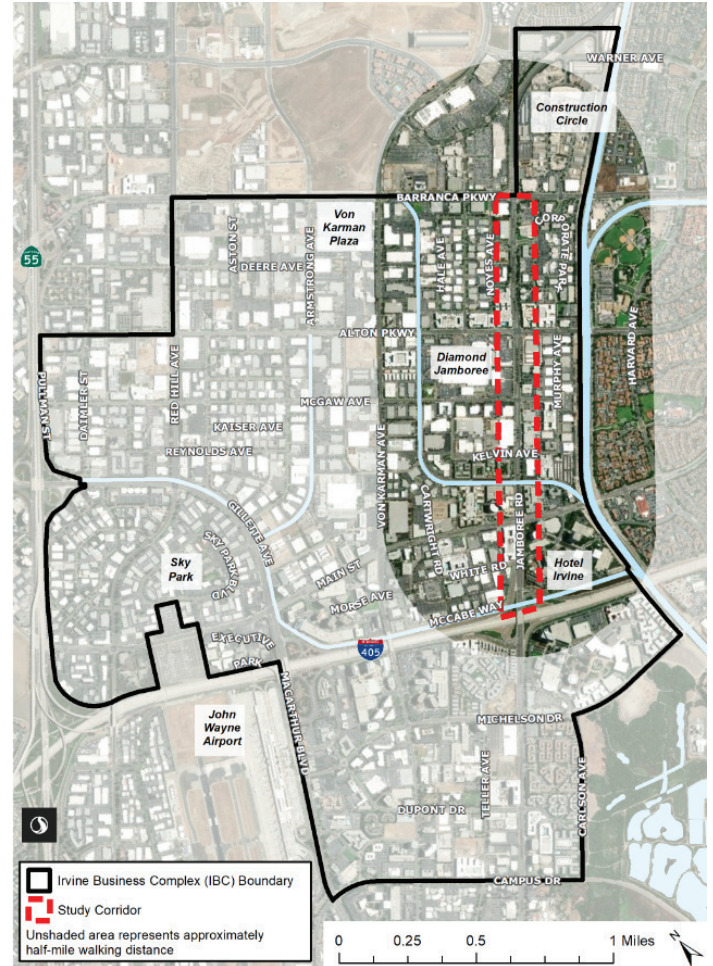
What is the Project?

The Feasibility Study will identify potential locations to construct a pedestrian bridge that will cross over Jamboree Road.

Why do we need a Pedestrian Bridge on Jamboree Road?

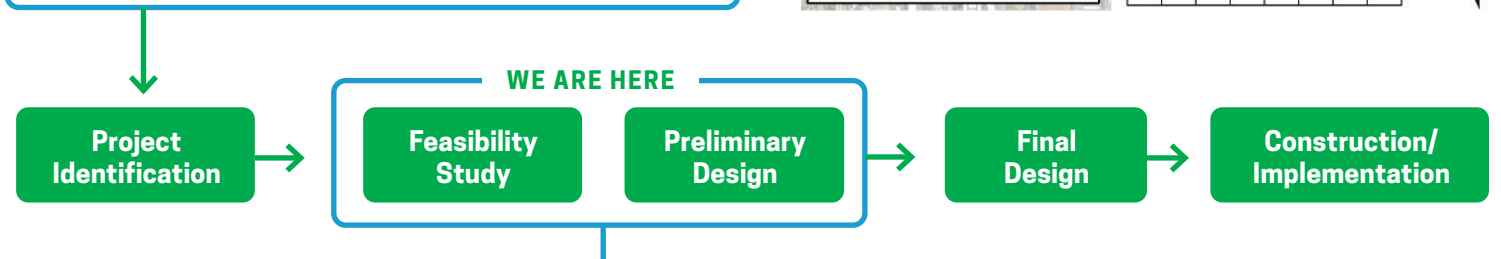
The Irvine Business Complex has transformed into an area with diverse land uses, providing the opportunity to live, work, and shop locally. The transformation has created a need for additional connections and new facilities for walking, bicycling, and recreation.

The objective of the Jamboree Pedestrian Bridge Feasibility study is to determine the possibility of constructing a pedestrian bridge that will cross over Jamboree Road. The study will identify and evaluate potential locations along Jamboree Road in between I-405 Freeway and Barranca Parkway. The bridge will provide a direct crossing for pedestrians over the roadway, separated from vehicular traffic.



IBC VISION PLAN

The IBC Vision Plan identified the need for a pedestrian bridge to cross Jamboree Road.



WE ARE HERE



Share your Thoughts!

For information on upcoming events visit:

www.IBCconnects.com

Contact Us

For more information, please contact **Melissa Dugan**:

mdugan@cityofirvine.org

(949) 724-7384

www.ibccconnects.com