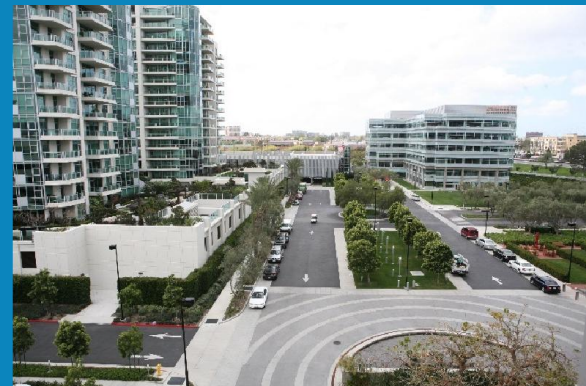


# Irvine 2035 | Our Future



Community Workshop  
September 7, 2016



# AGENDA

---



- Introduction
- General Plan Defined
- General Plan Update
- Opportunities to be Involved
- Next Steps
- Questions and Comments



# GENERAL PLAN DEFINED



- The Irvine General Plan is the City's master plan for development, improvement, and preservation of the City
- General Plan is a dynamic or living document subject to updates that:
  - Embrace and build upon long-standing objectives and values that define Irvine
  - Consider changes in circumstances, in conjunction with long-term community values, to appropriately plan for the City's future



# GENERAL PLAN DEFINED



- State law requires all communities in California to prepare a general plan to guide long-term development
- Irvine incorporated in 1971, the City adopted its first general plan in 1972, with subsequent updates over time



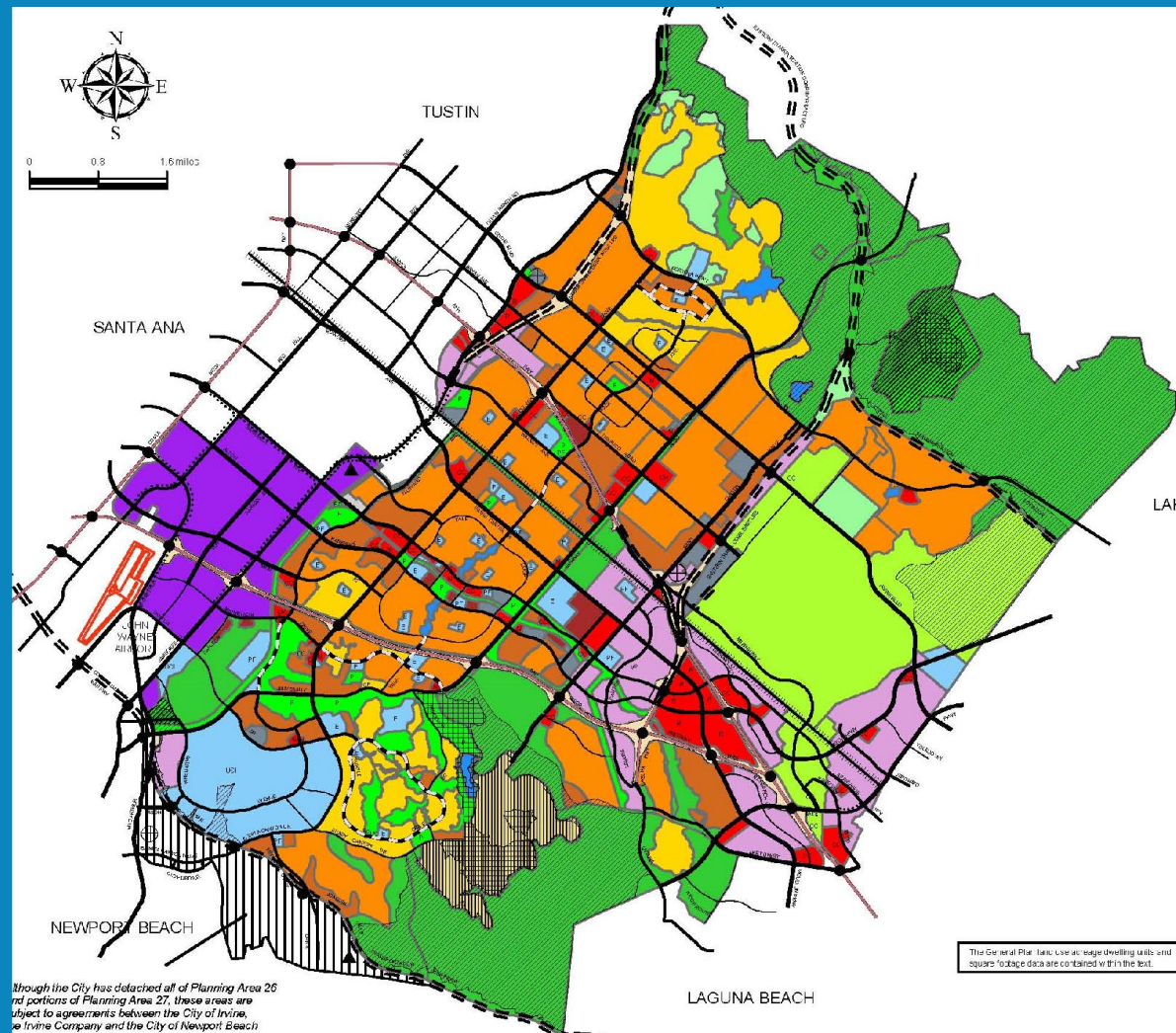


# GENERAL PLAN DEFINED



- Irvine General Plan guides Physical Character and location of Land Uses
- Planned balance of Land Uses
  - Land area approximately:
    - 1/3 Residential use
    - 1/3 Non-residential use
    - 1/3 Open space and recreation
- Organization of Land Uses
  - Villages – Planning Areas Street network
  - Landscape and streetscapes
  - Services – Physical location

# GENERAL PLAN DEFINED





# WHY UPDATE THE PLAN



- Since the last major update of the plan in 1999, Irvine has continued to mature.
  - Annexed 20 square miles
  - Population increase of 100,000+
- State laws have also significantly changed; general plans must be updated to keep pace with changing regulations.
- As community needs change, priorities and services must be adapted to maintain and improve quality of life.

# WHY UPDATE THE PLAN



- Substantial amendments to the General Plan since the last comprehensive update:
  - Northern Sphere Project (2002)
  - Creation of Orange County Great Park and Great Park Neighborhoods (2003)
  - Spectrum Housing (2003)
  - IBC Vision Plan (2010)
  - Great Park Neighborhoods GPA/Zone Change (2013)
  - Updates to the Housing Element (most recently in 2013)





# PURPOSE OF THE UPDATE



- The comprehensive update should be a logical extension of the existing General Plan
- Implementation of the General Plan is Planned Change
- General Plan has evolved over time, while remaining true to original principles



# GENERAL PLAN CONTENTS



- **Vision** ... that describes what the community aspires Irvine to become
- **Blueprint** ... for growth & preservation
  - Issues
  - Goals
  - Policies/Strategies
- **Implementation Plan**
  - Specific actions to achieve goals
  - Timeframes for completion
  - Agencies responsible for actions



# A GENERAL PLAN IS NOT



- A General Plan is not the same as design guidelines for specific development.
- General Plans are not the same as zoning, which regulate uses of a specific parcel. The general plan covers the entire city.
- General Plans are not short-range plans, but instead address long-term planning of a city (a 15 to 20-year period).





# USING THE GENERAL PLAN



## The General Plan is used in many ways

- By the City, to guide decisions, prioritize services, and plan improvements
- By developers, to build new projects and amenities to serve the community
- By agencies, to understand key needs of the community and plan for services
- By residents, to provide input on policies and programs to improve quality of life



# GENERAL PLAN TOPICS

---



## **Required topics under state law:**

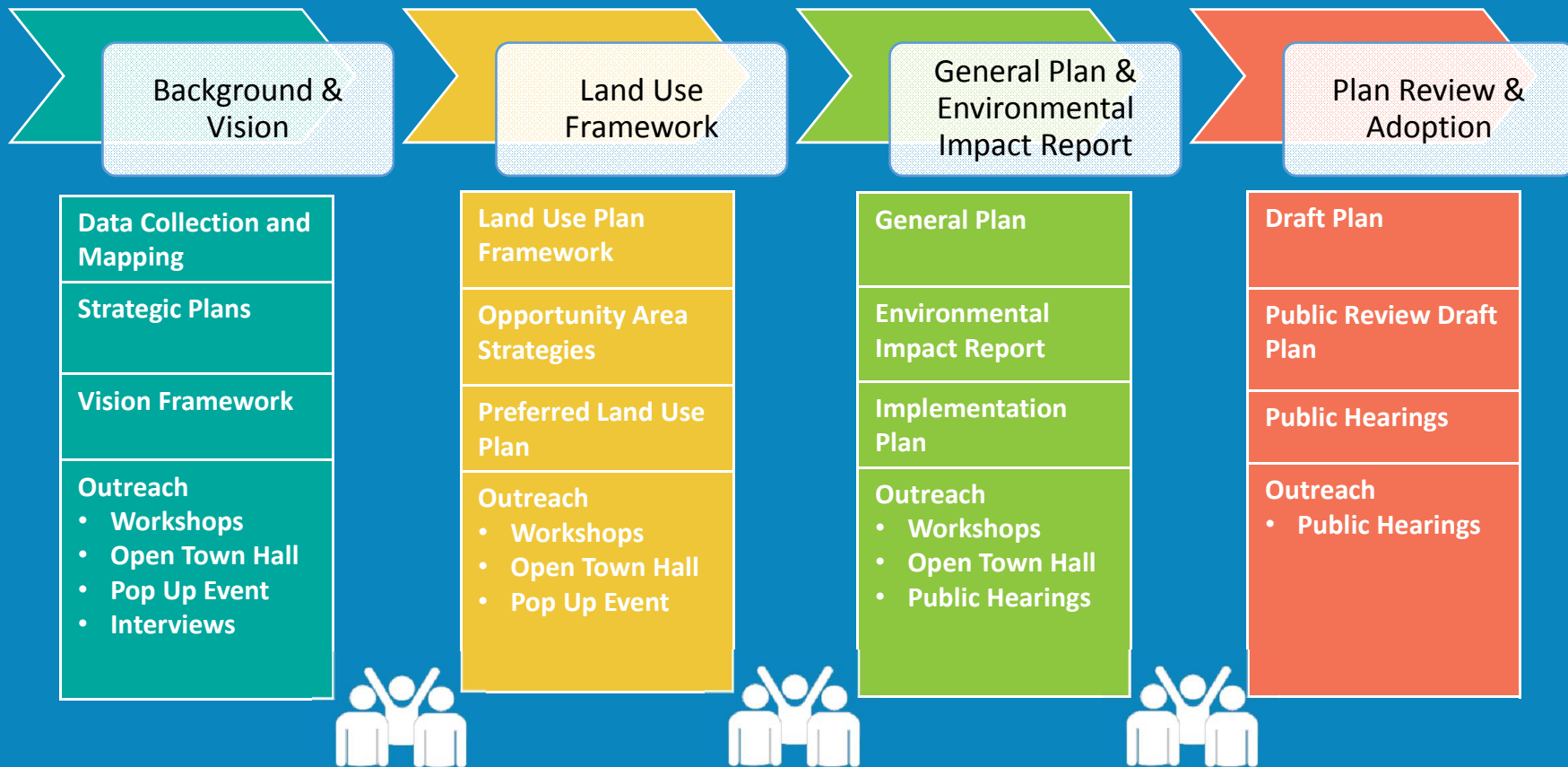
- \_Land Use
- \_Circulation
- \_Housing
- \_Safety
- \_Noise
- \_Open Space
- \_Conservation

## **Optional topics that cities often add:**

- \_Economic Development
- \_Community Design
- \_Parks and Recreation
- \_Historic Preservation
- \_Public Services
- \_Growth Management
- \_Other topics as well

**The Irvine 2035 General Plan will include required topics  
and additional topics that address community needs**

# PROCESS CHART





# COMMUNITY ENGAGEMENT



- **General Plans are most successful when the community actively participates!**
- **Opportunities to Participate**
  - Community Workshops
  - Online Engagement
  - Public Hearings
  - Pop Up Events
  - Surveys



# WAYS TO GET INVOLVED

---



- **Upcoming Events**

- September 24<sup>th</sup> Global Village Festival
- October 4<sup>th</sup> Community Workshop

- **On-line Connections**

- City Web Site: [www.irvine2035.org](http://www.irvine2035.org)
- General Information
- Project Process and Updates
- Survey

For information on the

**IRVINE  
GENERAL  
PLAN UPDATE**

visit: [www.irvine2035.org](http://www.irvine2035.org)

**Get Involved & Stay Informed!**



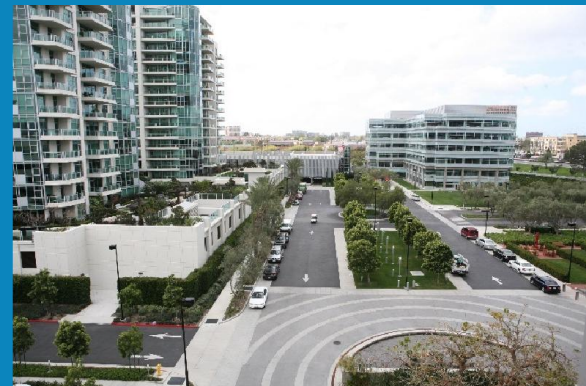
# QUESTIONS AND COMMENTS

---





# Irvine 2035 | Our Future



Community Workshop  
September 7, 2016





HOME • NEWSROOM • IRVINE 2035 • OUR FUTURE

#### NEWS & MEDIA

- › 2016 Guide to Irvine
- › Calendar View
- › Calendar of Events
- › Communications Toolkit
- › ICTV
- › Inside Irvine
- › Irvine, Defined
- › Newsroom
- › Press Releases

## Irvine 2035 – Our Future



Take our Survey now to help the City of Irvine determine its update to the General Plan, a state-required document to represent the long-range vision of the City. [Click here](#) for Survey.

Also, provide feedback at a free Community Workshop on Tuesday, May 17 at 7 p.m. at the South Coast Chinese Cultural Center, 9 Truman St., Irvine.

The General Plan is the "Master Plan" for development. The purpose of the update is to build upon longstanding objectives that define Irvine and for the City Council to consider changes as needed. The update will serve as the City's blueprint for the future. It will establish community goals and public policy direction to ensure Irvine's high quality of life is preserved and enhanced as build-out of the City occurs. City staff will conduct public outreach over the coming months for this project. During this process, we will engage our community.

Here are more details and important links:

1. About the General Plan
2. Current General Plan
3. Comprehensive Update
4. Latest News/Getting Involved





# SURVEY INTRODUCTION



- **Purpose**

To ensure that Irvine's high quality of life is preserved and enhanced well into the future- we want to hear from you

- **How will the data collected be used?**

- \_Shared with City decision makers

- \_Identify Community Priorities





# SURVEY COMPONENTS

---



## Two Part Survey

1. Demographic Information
2. Questions pertaining to your priorities for Irvine's future

