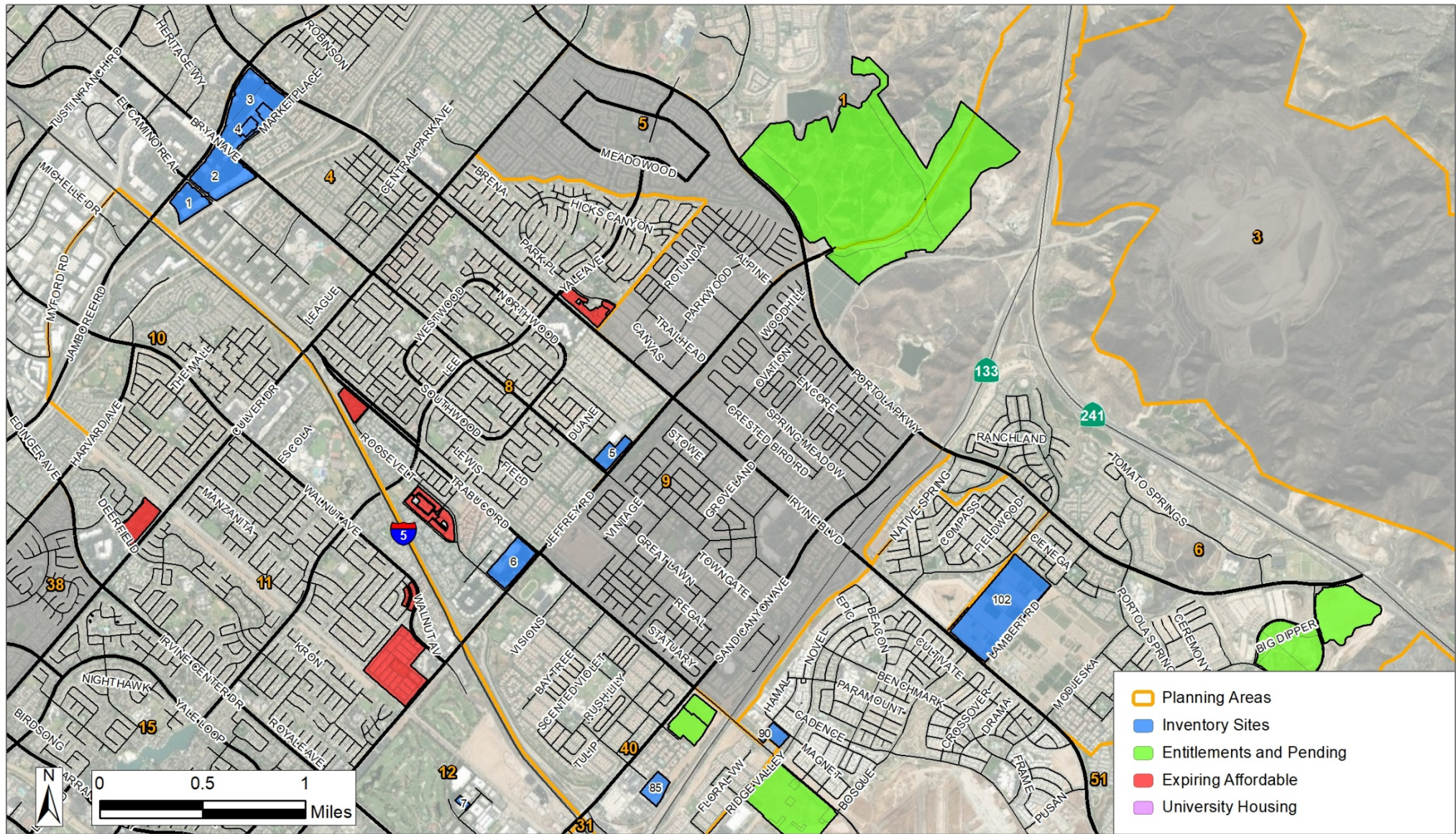
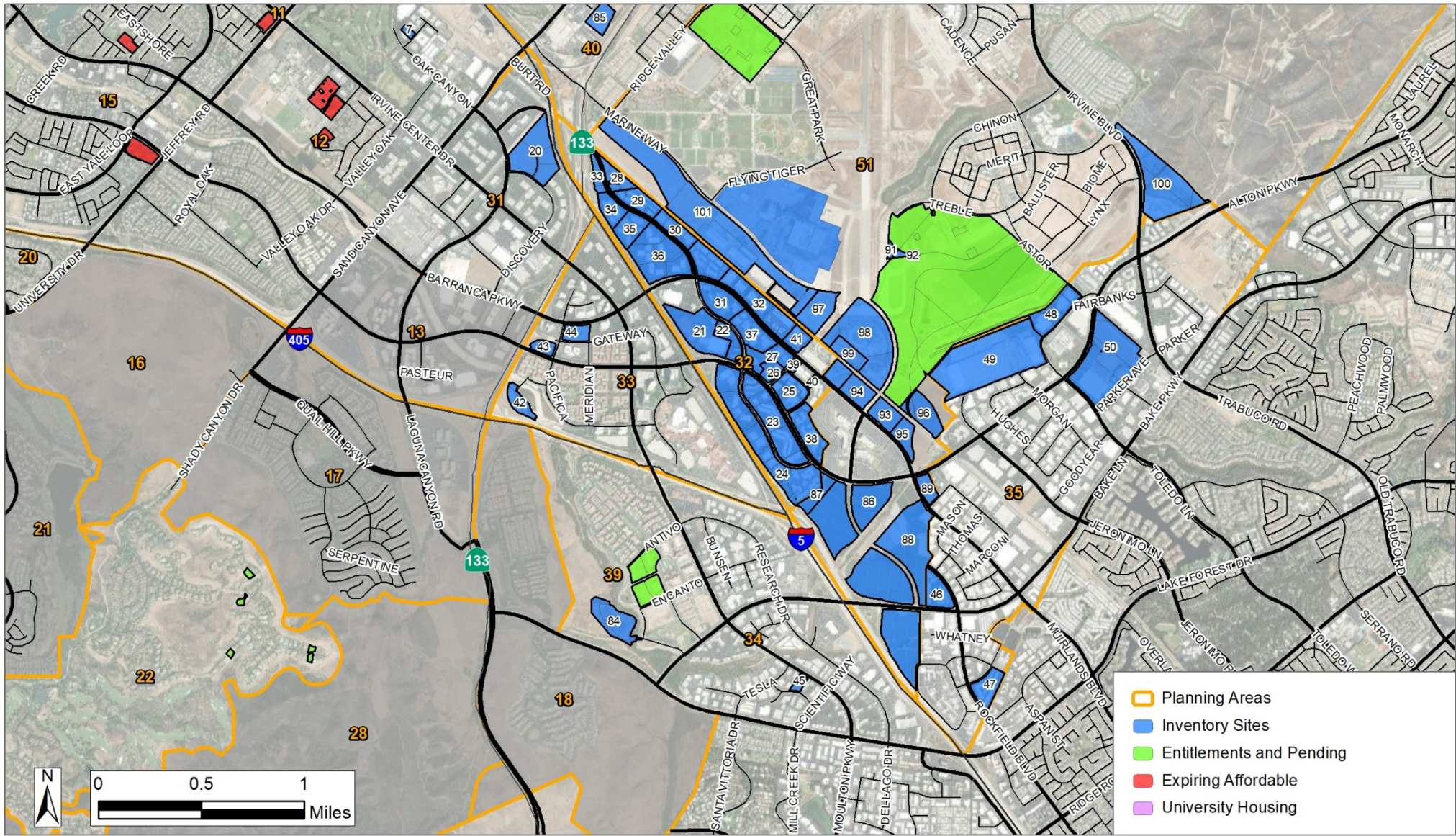


| Planning Area Name | Total | Category 1 | Category 2 | Category 3 | Category 4 |
|----------------------------------|----------------------|---------------------|---------------------|---------------------|----------------------|
| RHNA | 23,610 | 6,396 | 4,235 | 4,308 | 8,671 |
| PA 4 (Lower Peters Canyon) | 2,007 | 512 | 341 | | 1,154 |
| PA 19 (RSJ Area) | 2,202 | 279 | 186 | 173 | 1,564 |
| PA 23 (San Joaquin Marsh) | 1,000 | 600 | 400 | | |
| PA 24 (University Town Ctr.) | 823 | 237 | 158 | 43 | 385 |
| PA 32 (Spectrum 3) | 17,740 | 447 | 298 | 1,702 | 15,293 |
| PA 33 (Irvine Spectrum Ctr.) | 943 | 200 | 134 | 62 | 547 |
| PA 36 (IBC) | 10,986 | 1,517 | 1,010 | 791 | 7,668 |
| PA 40 (Cypress Village) | 613 | 300 | 156 | | 157 |
| PA 51 (Great Park Neighborhoods) | 15,772 | 2,645 | 2,189 | 1,948 | 8,990 |
| All Other PA (including UCI) | 8,903 | 0 | 0 | 2,864 | 23,479 |
| <u>Site Inventory</u> | <u>78,429</u> | <u>6,737</u> | <u>4,872</u> | <u>7,583</u> | <u>59,237</u> |
| <i>Difference</i> | <i>54,819</i> | <i>341</i> | <i>637</i> | <i>3,275</i> | <i>50,566</i> |

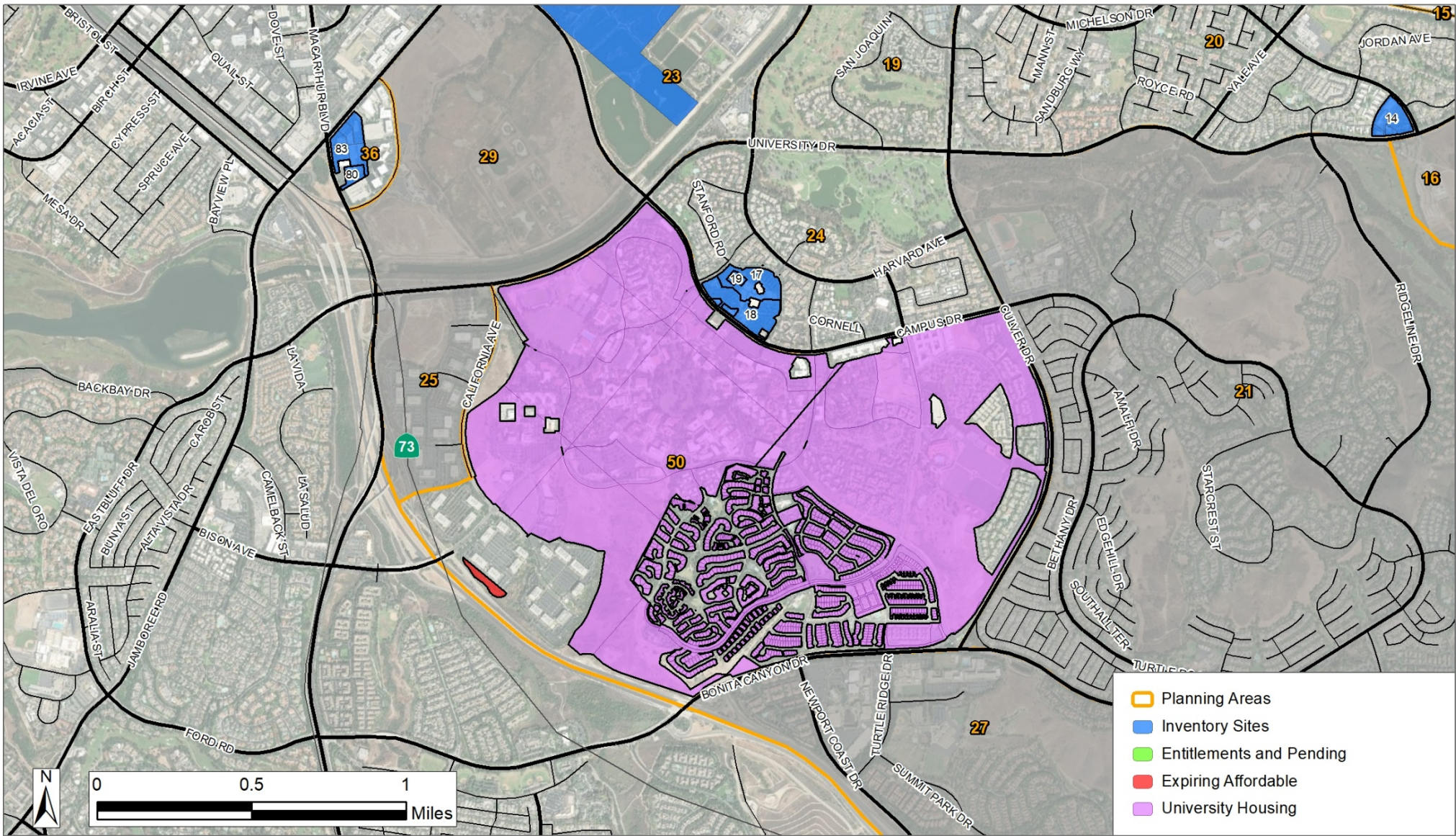






CITY OF IRVINE





- Planning Areas
- Inventory Sites
- Entitlements and Pending
- Expiring Affordable
- University Housing

CITY OF IRVINE

