

# IRVINE

2045 GENERAL PLAN



## General Plan Update Community Workshop

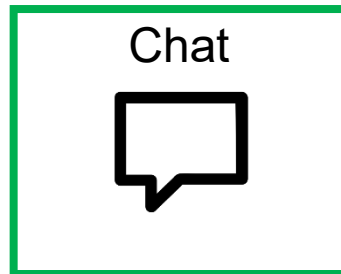
May 24, 2023

6:00 - 8:00 p.m.

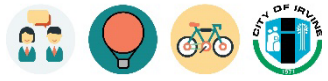


# Zoom Webinar Instructions

---



- Members of the public will be muted throughout the meeting and will not be able to unmute themselves.
- We will share relevant links and information through the "chat" feature.
- Please use the "question" feature to ask questions.
- Please use the "chat" feature to request technical assistance.
- If you are participating by phone, raise your hand for help by dialing \* 9



# Our Guide for Productive Meetings



*Raise your hand* to join the conversation or use the chat box



Help to make sure that everyone has *equal time* to contribute



Keep input *concise* and *focused* so that others have time to participate



*Actively listen* to others to understand their perspectives



*Offer ideas* to address others' questions and concerns





# Agenda

---

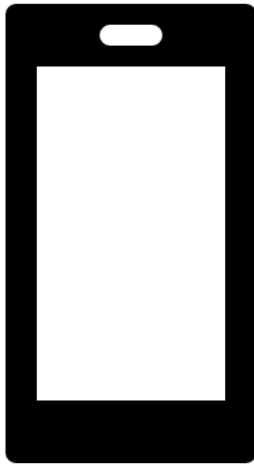
1. Welcome and Team Introductions
2. Background
3. General Plan Update
4. Input Activities
5. Next Steps



# Welcome and Introduction

# POLL EVERYWHERE – WAYS TO PARTICIPATE

---

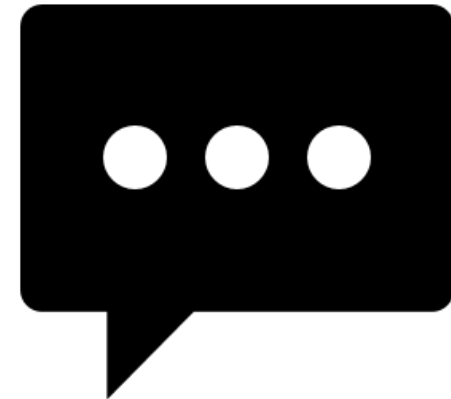


## BY SMART PHONE

Go to

[Pollev.com/kwpoll299](https://Pollev.com/kwpoll299)

on your internet browser.



## BY TEXT MESSAGE

Text **kwpoll299** to 22-333 on your mobile device.

**What do you love about Irvine? (Use underscore\_ for more than 1 word responses)**



---

# Background



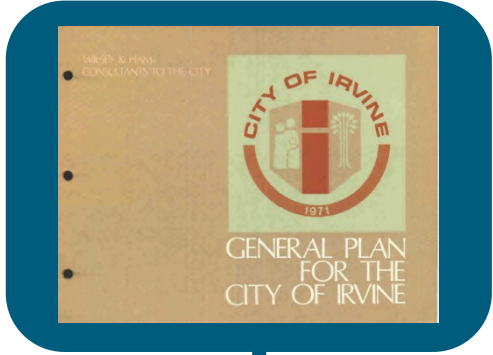
## What is a General Plan?

The General Plan represents the community's view of its future. It is:

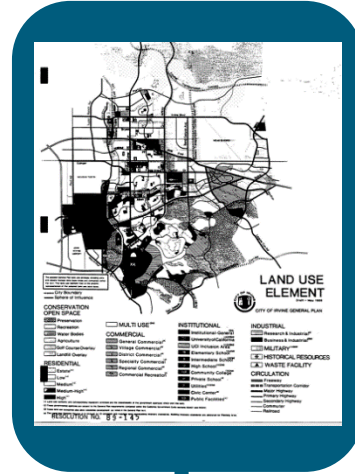
- A state-mandated document that represents the City's long-range vision.
- A comprehensive, long-term plan for the future physical development of the City.
- A guiding document for administrative and legislative functions.



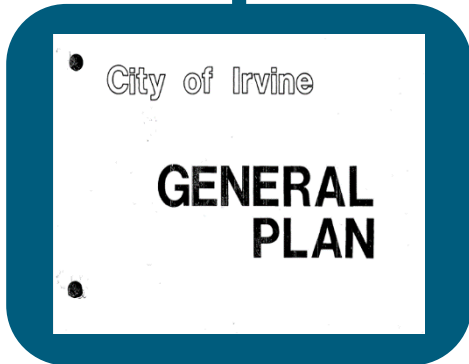
# General Plan Timeline



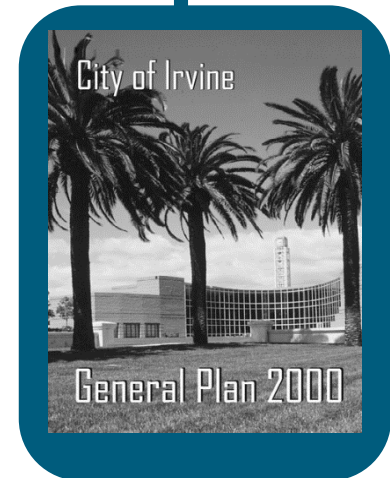
**1973**  
FIRST GENERAL PLAN



**1989**  
AMENDMENT ADDRESSED  
CITY'S OPEN SPACE NEEDS

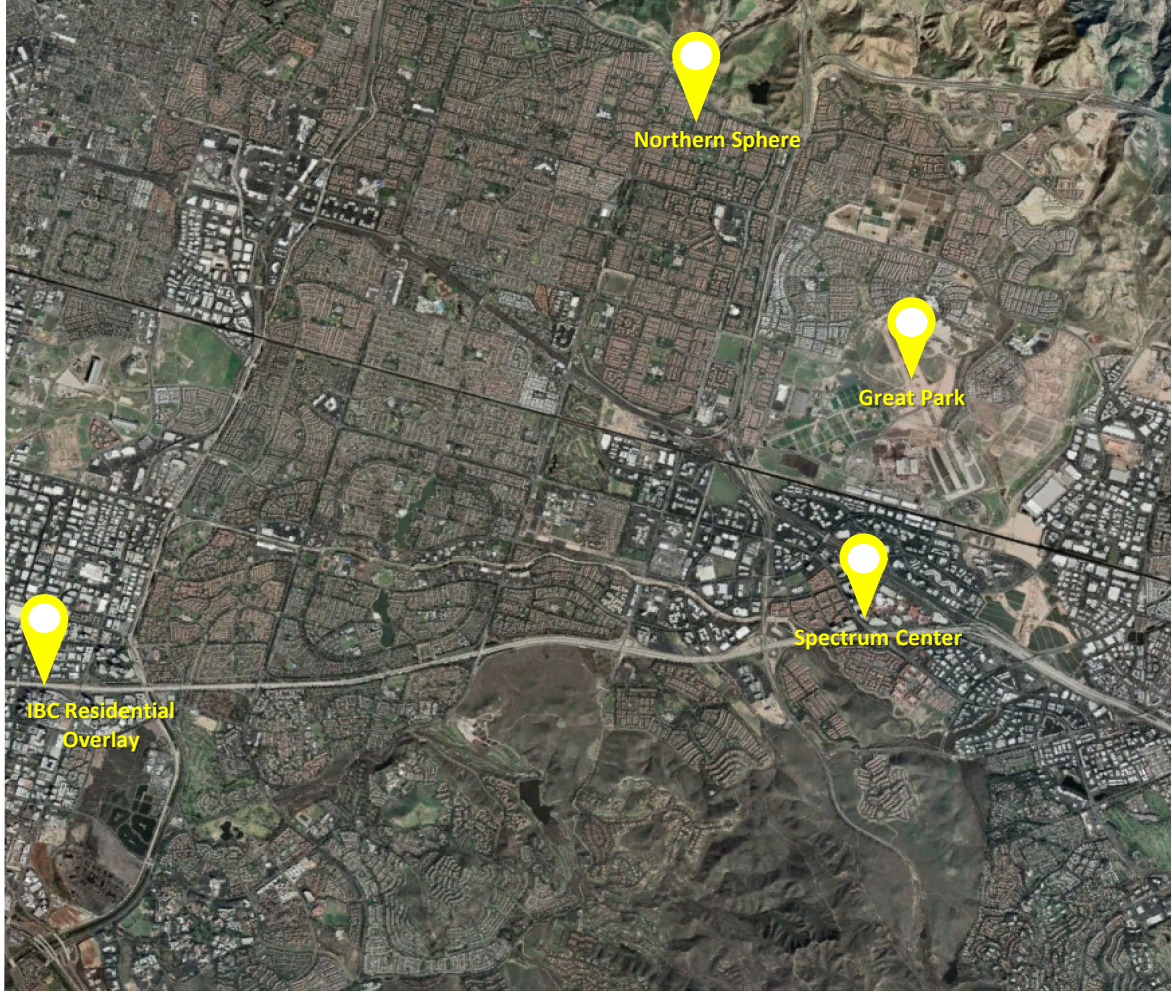


**1977**  
FIRST MAJOR AMENDMENT



**2000**  
COMPREHENSIVE  
GENERAL PLAN UPDATE

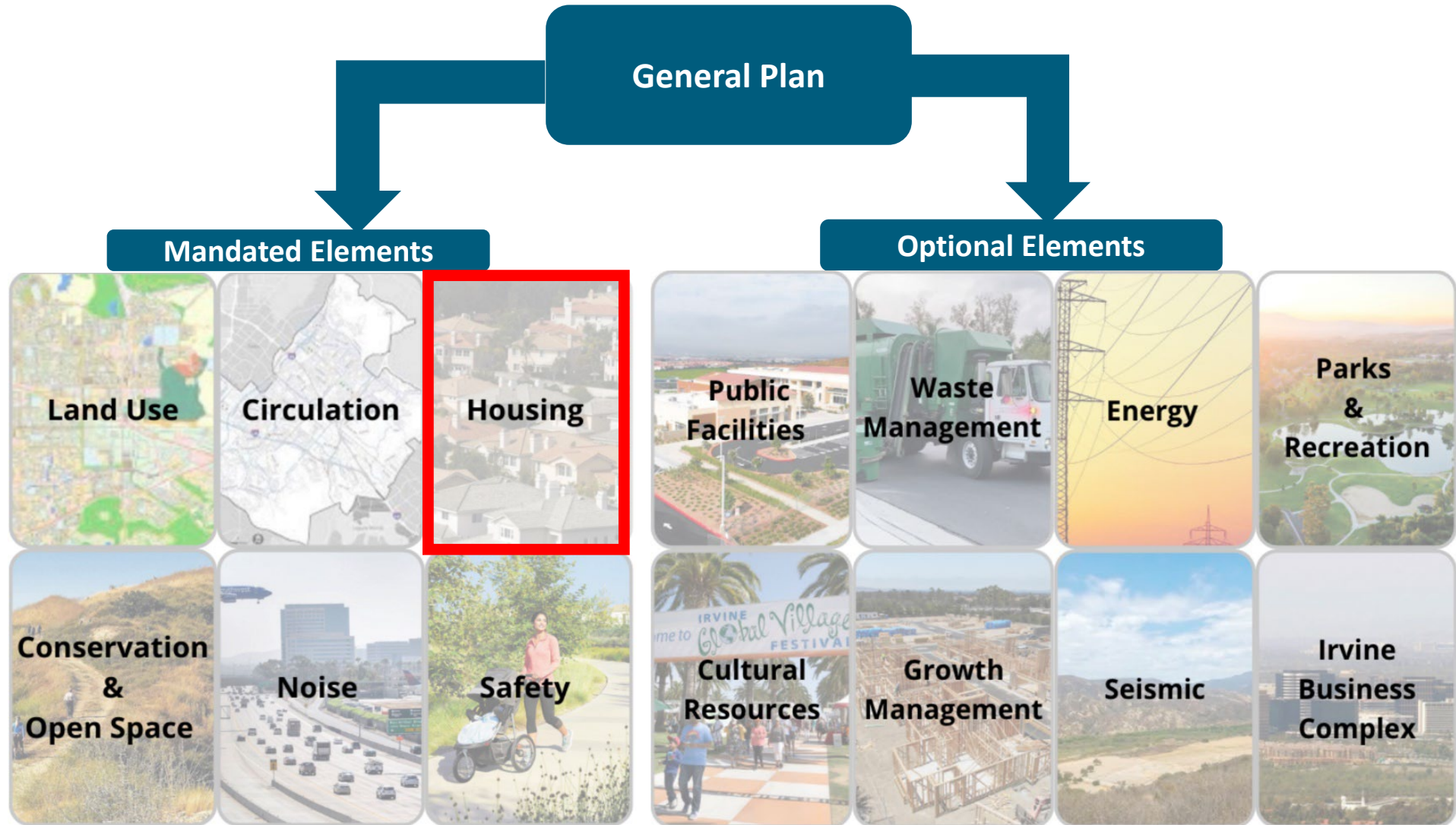
# Significant General Plan Updates



**2000**  
Population: 141,200

**Current**  
Population: 310,250

# Background





# Housing Element

# Housing Element

## What is a Housing Element?

- Irvine’s “housing plan” is a required chapter in the General Plan. Irvine, along with all California cities and counties, is required to plan and meet the housing needs of everyone in the community.
- All cities and counties are required to update their Housing Element every eight years for State certification.

# Housing Element

## What is a Housing Element? *(continued)*

- The Housing Element contains goals, objectives, policies, and programs of how Irvine will meet its existing and future housing needs for all income levels.
- The Housing Element provides opportunities for the private sector to develop housing where market conditions determine when and where housing is built.
- The City does not build the housing.



# Housing Element



FINAL

2021–2029

**HOUSING ELEMENT**

HCD Compliance Finding – May 6, 2022



- Irvine’s 6th Cycle Housing Element was certified by the California Housing and Community Development (HCD) on May 24, 2022.
- Senate Bill 197 allows cities and counties three (3) years to complete required zoning.
- February 2025





# IRVINE

2045 GENERAL PLAN

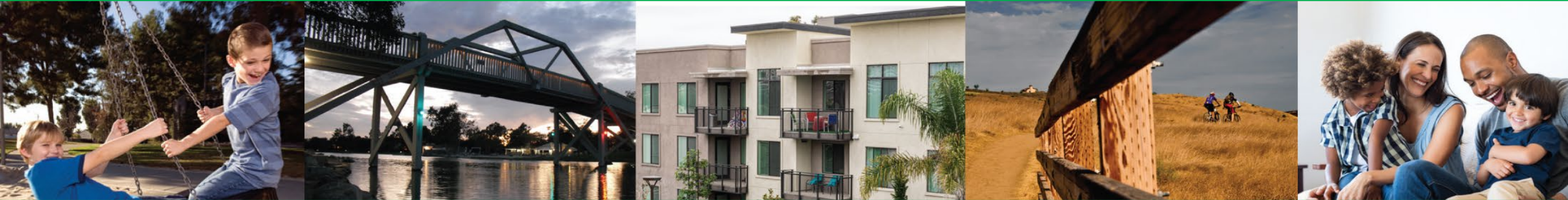


---

## General Plan Update

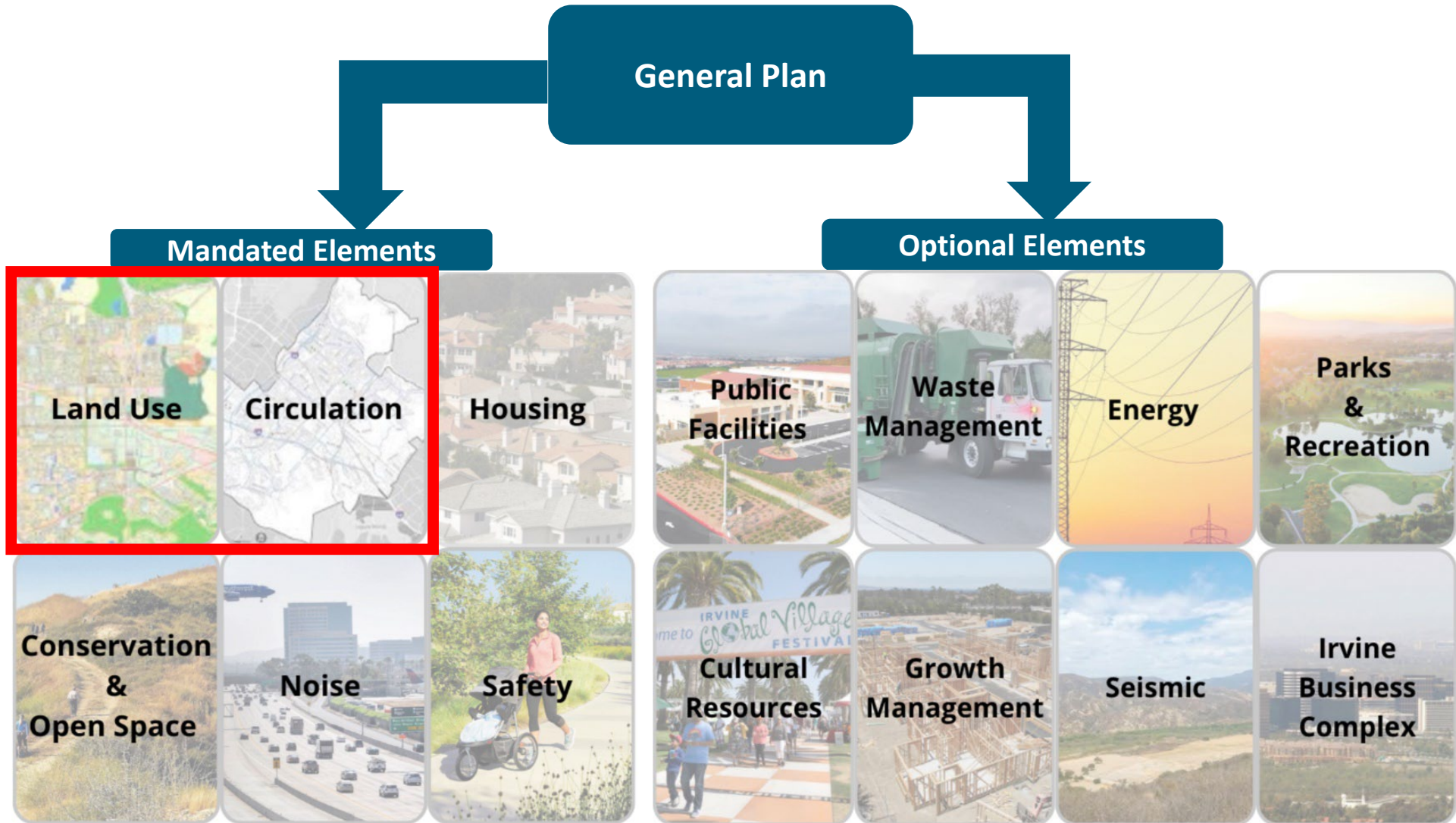
# General Plan Update Goals

- Focused Update that will accommodate the 2021-2029 Housing Element (*i.e.*, update the Land Use, Circulation, Noise, and Safety Element).
- Incorporate changes required by state law.



- Examine goals, objectives, and policies to ensure that a high quality of life is maintained.
- Develop new environmental protection and climate action element as directed by City Council in 2019.
- Incorporate health and wellness theme throughout.

# Background



# General Plan Update

## Land Use

- Update the land use plan to align with the 6th Cycle Housing Element, including the Regional Housing Needs Assessment (RHNA) growth.
- Consolidate the Land Use element with the existing Irvine Business Complex element.

# General Plan Update

## Environmental Review/Documentation

- Complete and submit appropriate environmental documentation in compliance with the California Environmental Quality Act (CEQA).

### Program Environmental Impact Report (EIR)

- Establish existing baseline and future buildout conditions.
  - Develop and analyze project alternatives.
- Evaluate potential and cumulative impacts of the project.
  - Potential mitigation measures.

# Before and After- West Irvine



# Before and After- Spectrum

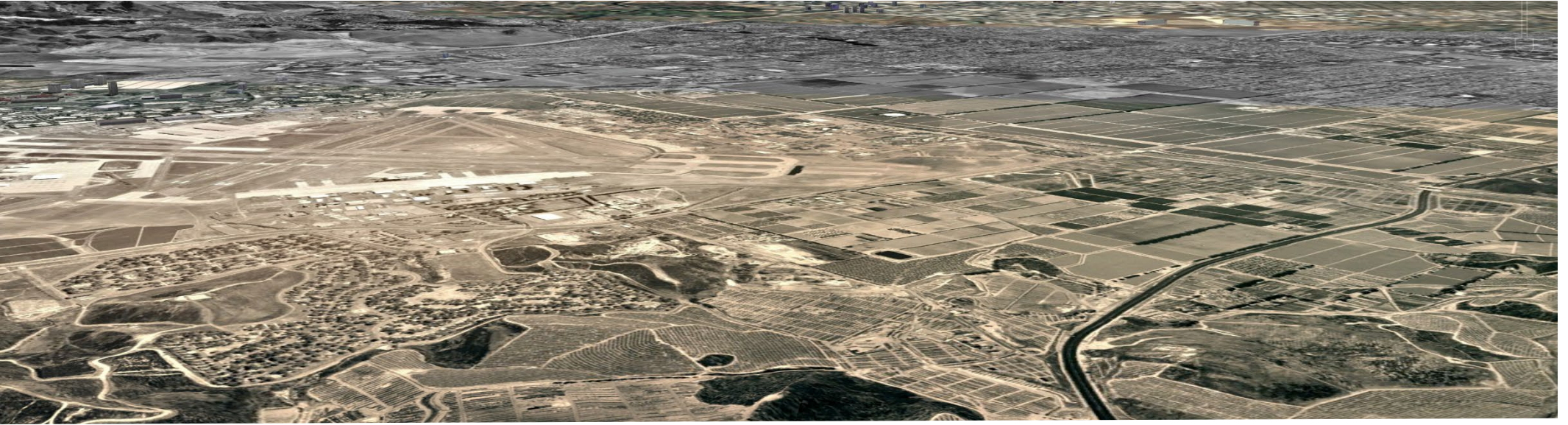


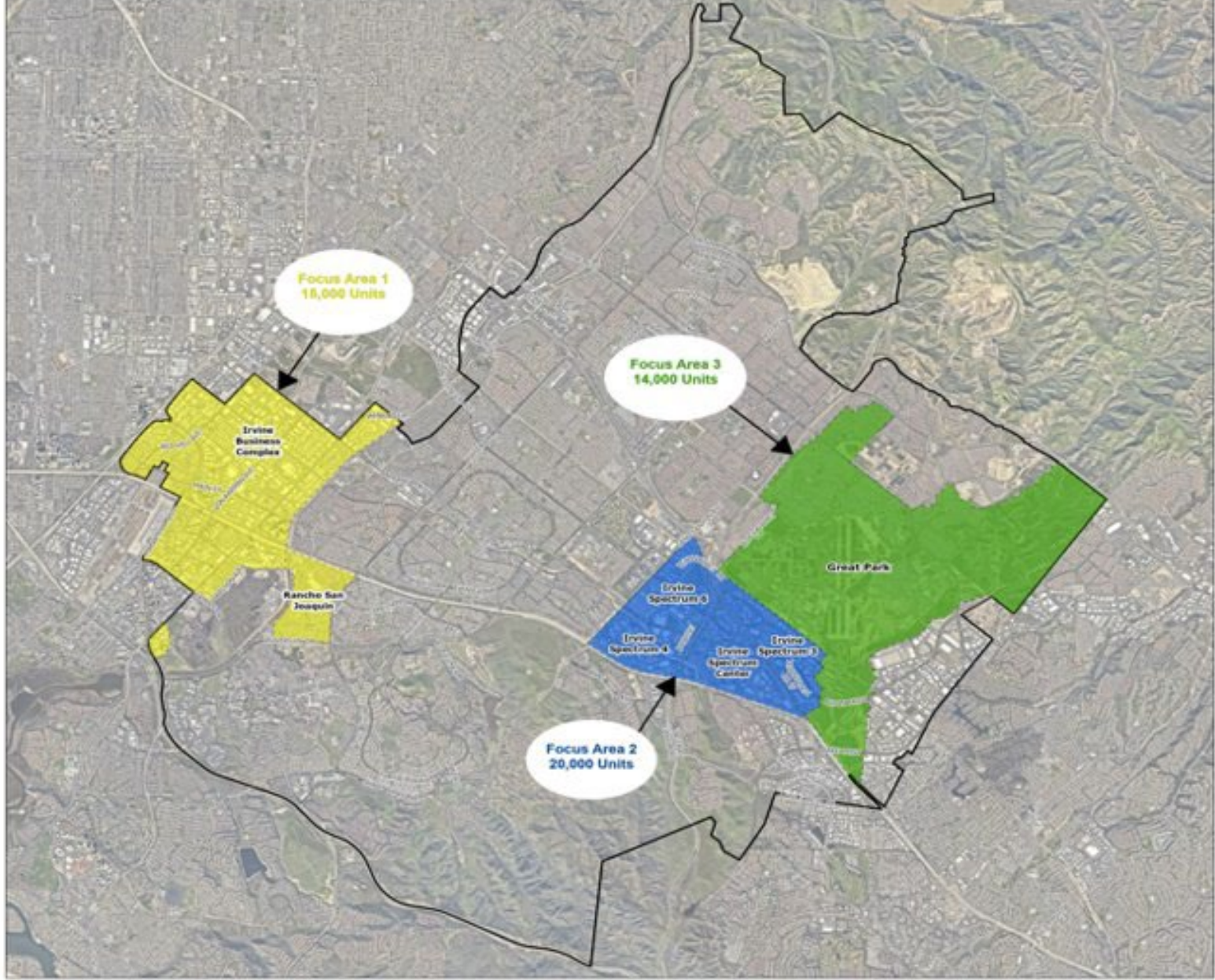
# Before and After- West Irvine





# Before and After- North Irvine

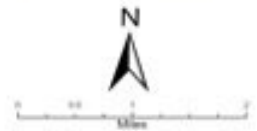




**Legend**

- Focus Area 1 - PA 36 and 19
- Focus Area 2 - PA 13, 31, 32 and 33
- Focus Area 3 - PA 51

**GENERAL PLAN UPDATE  
FOCUS AREAS**



# Design Considerations



- Shape physical character of neighborhoods appropriate with context
- Focus on the look, feel, and function of the buildings, streets, and spaces in between

# Residential Development



BEFORE



AFTER



# Small Scale Retail



# Residential with Supporting Neighborhood Retail



# Complete Streets

Balanced movement priorities



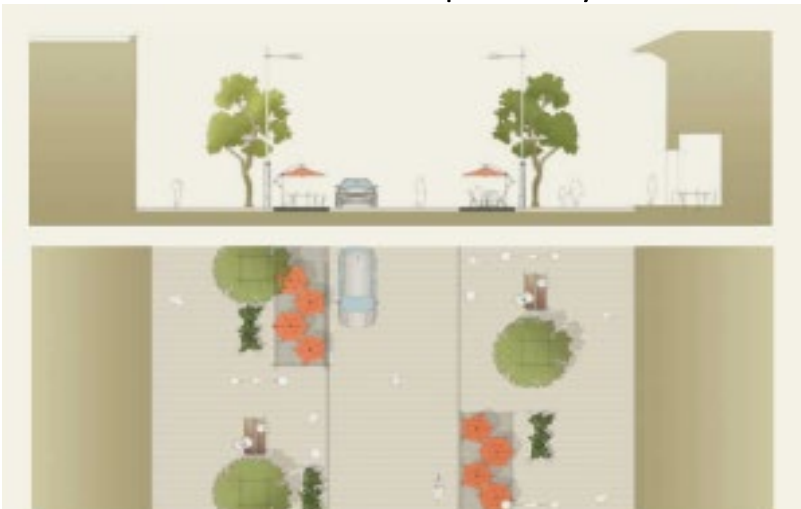
Pedestrian & bicycle priority



Balanced access priority



Pedestrian priority



Road diet



Bicycle priority



# Open Space



## OPEN SPACE PRESERVES

57,500+ acres, preserved for public enjoyment

- AMENITIES**
- Hiking
  - Spectra
  - Biking
  - Score Flats



## REGIONAL PARKS

50+ acres, serve the entire county

- AMENITIES**
- Ballpark
  - Pool
  - Talk
  - Artistic Fields
  - South Courts
  - Playgrounds
  - Portals



## COMMUNITY PARKS

10-49 acres, serve multiple villages

- AMENITIES**
- Community Centers
  - Sitting Area
  - Artistic Fields
  - Soft Play
  - South Courts
  - Talk
  - Playground



## NEIGHBORHOOD PARKS

3-10 acres, serve neighborhoods within a village

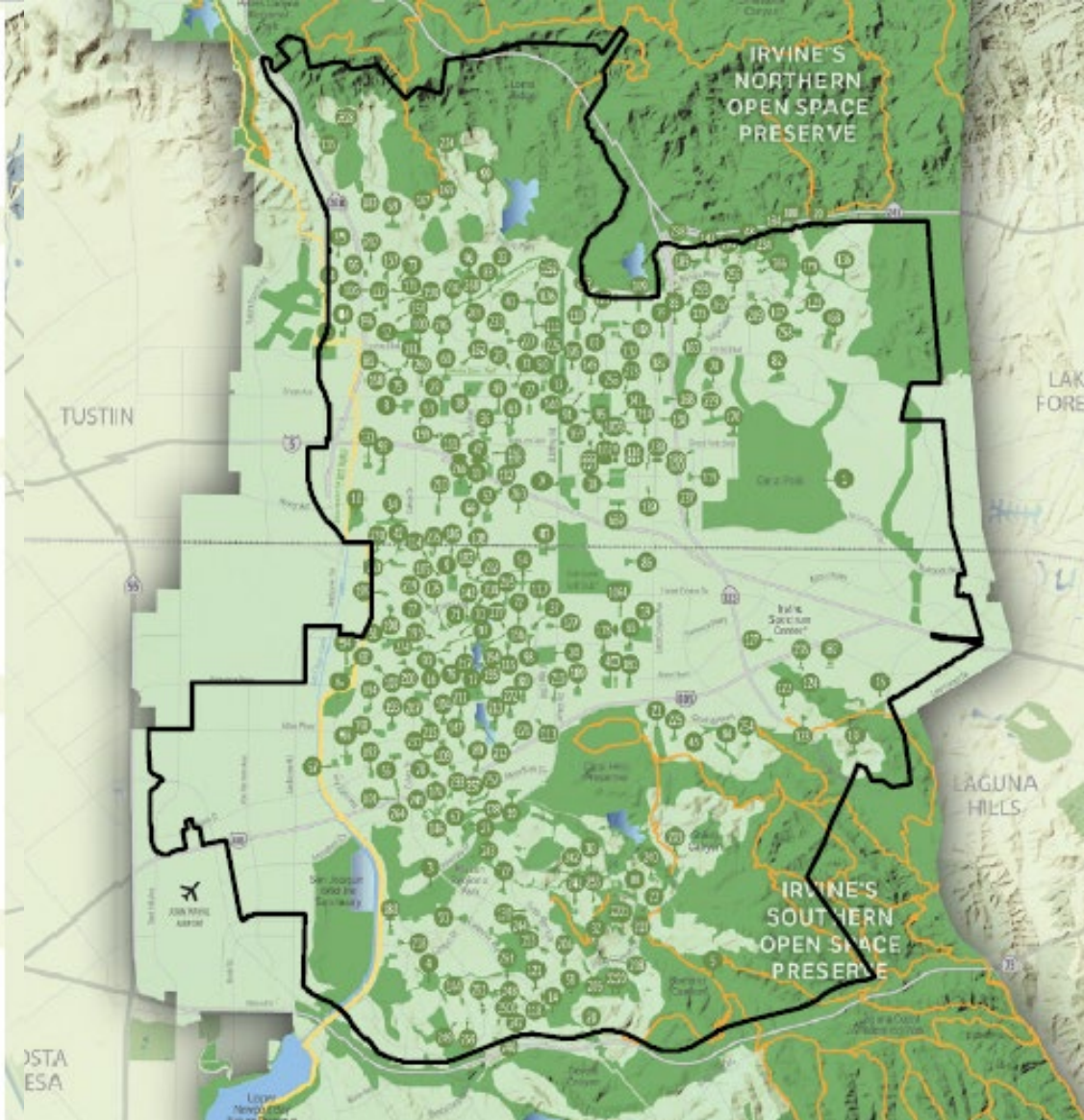
- AMENITIES**
- Artistic Fields
  - Pool
  - Track
  - Playground
  - Portals



## VILLAGE PARKS

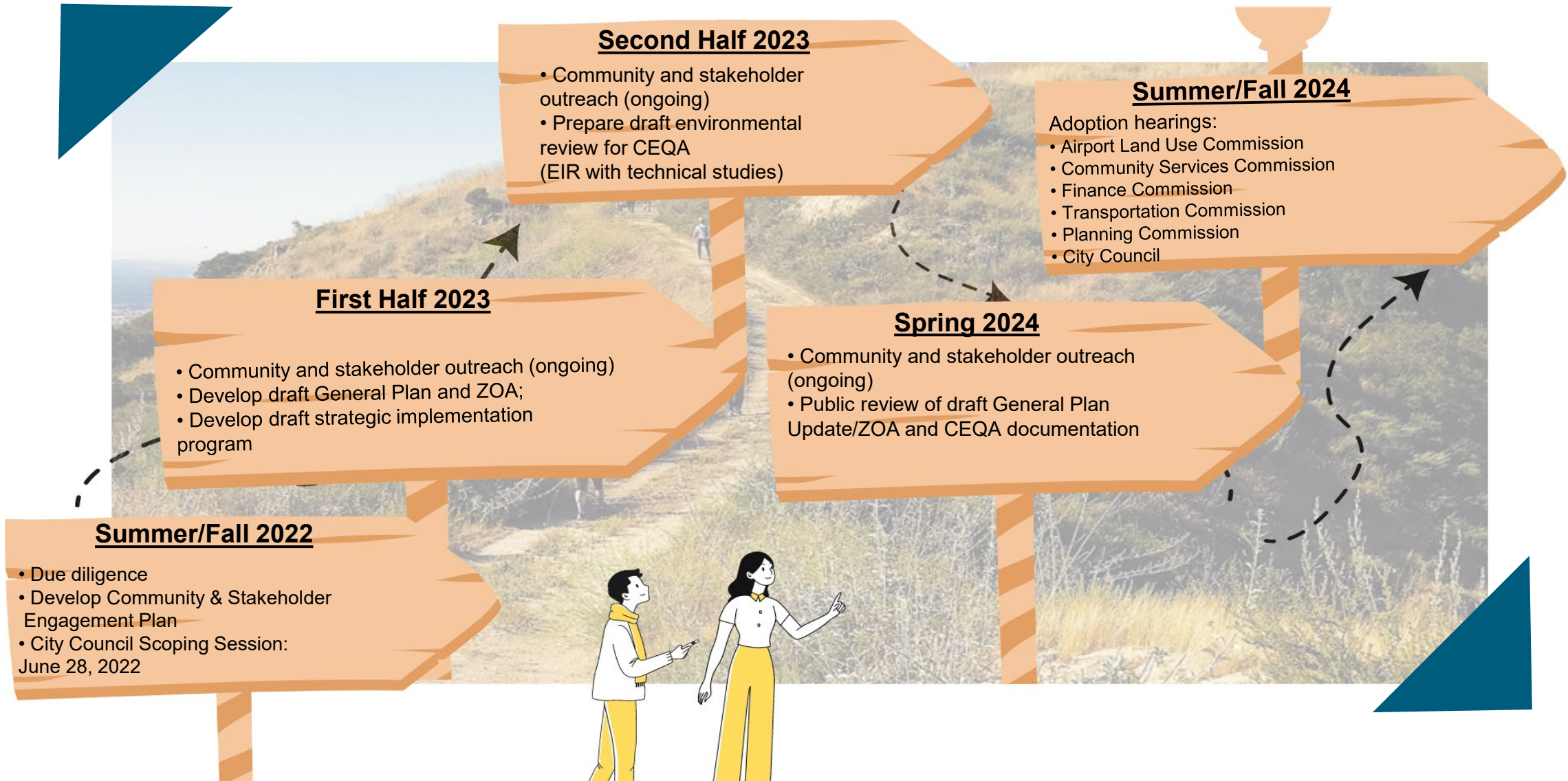
1/3-3 acres, serve homes within walking distance

- AMENITIES**
- Pool
  - Playground
  - Portals





# General Plan Update Timeline





Questions?

# Questions



*Raise your hand to join the conversation or use the chat box*



Help to make sure that everyone has *equal time* to contribute



Keep input *concise* and *focused* so that others have time to participate



*Actively listen* to others to understand their perspectives



*Offer ideas* to address others' questions and concerns

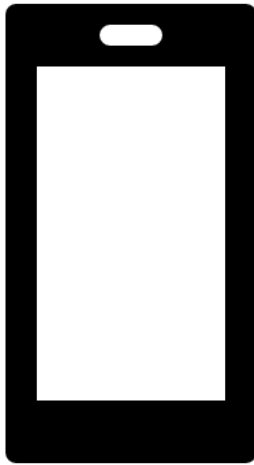




# Activities

# POLL EVERYWHERE – WAYS TO PARTICIPATE

---

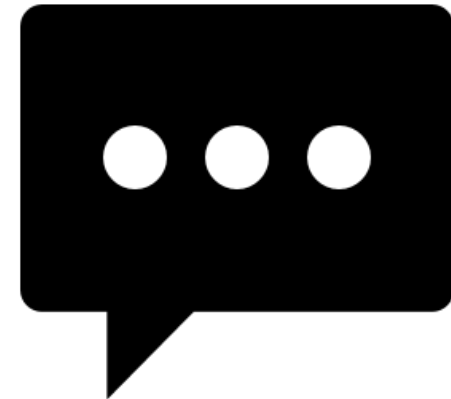


## BY SMART PHONE

Go to

[Pollev.com/kwpoll299](https://Pollev.com/kwpoll299)

on your internet browser.



## BY TEXT MESSAGE

Text **kwpoll299** to 22-333 on your mobile device.



# Residential



Option A



Option B



Option C



Option D

**In general, which of the following Residential design styles do you like? Choose as many as you like.**



# Residential with Supporting Retail



Option A



Option B



Option C



Option D

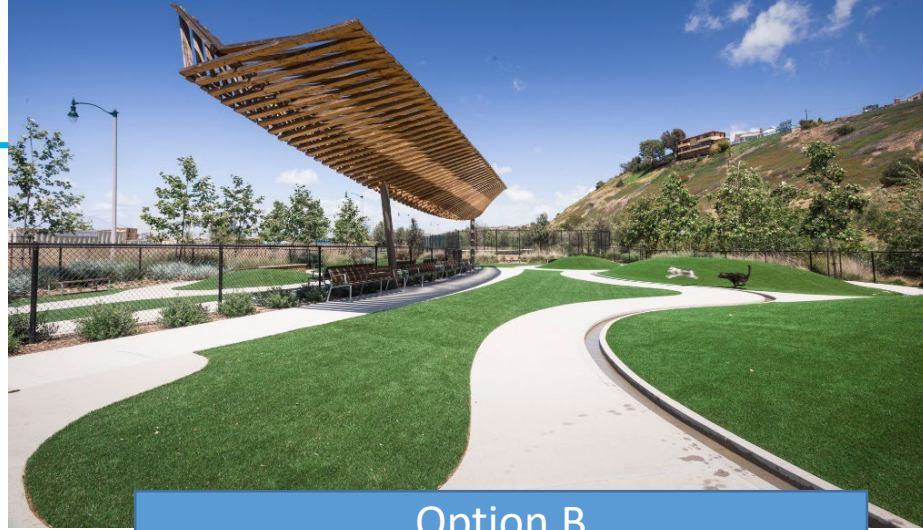


**In general, which of the following Residential with Supporting Retail design styles do you like? Choose as many as you like.**

# Pocket Parks



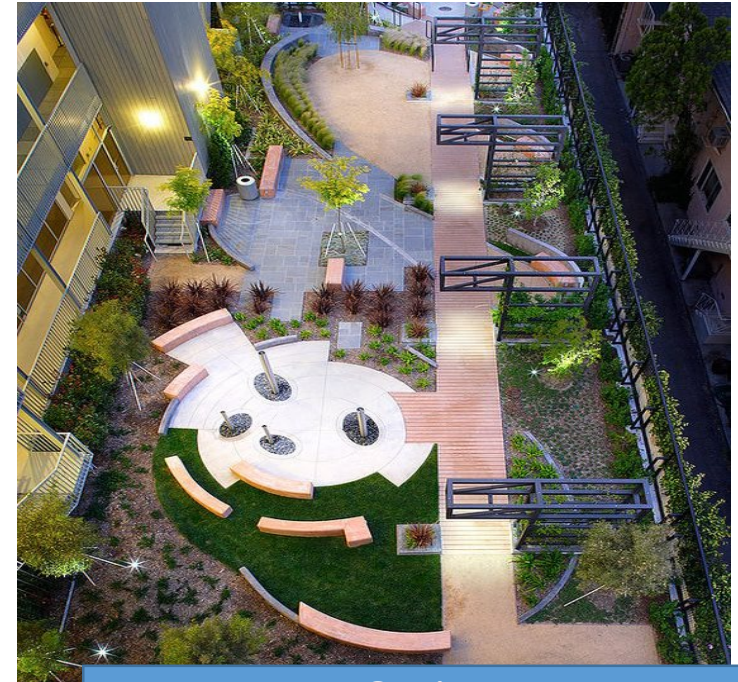
Option A



Option B



Option C



Option D

**In general, which of the following Pocket Park design styles do you like? Choose as many as you like.**

Development Near Transit



Option A



Option B



Option C



Option D

**In general, which of the following Development Near Transit design styles do you like? Choose as many as you like.**

# Small Scale Retail



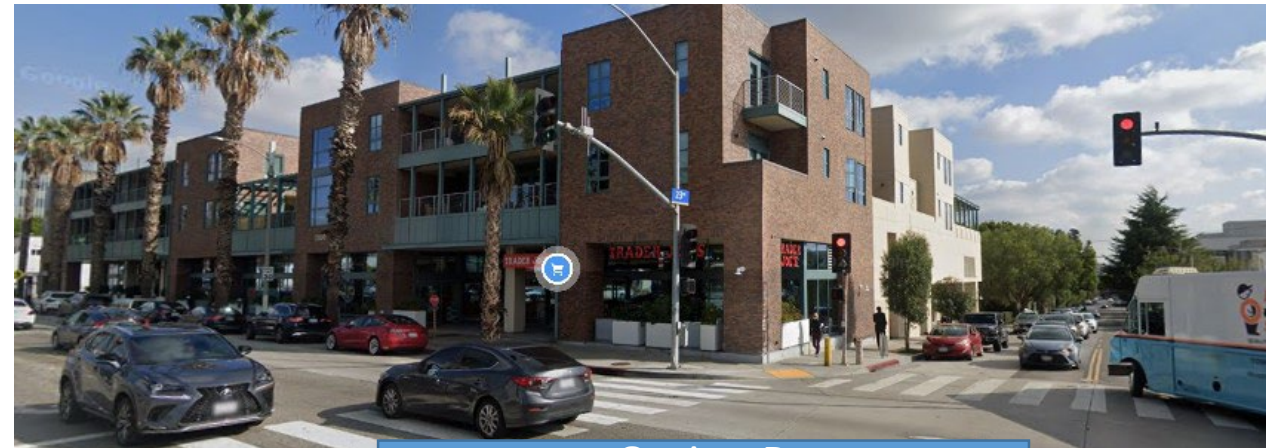
Option A



Option B



Option C

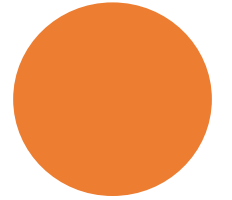


Option D

**In general, which of the following Small Scale Retail design styles do you like? Choose as many as you like.**

# Pedestrian Facilities

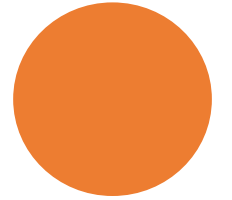
- Sidewalks and Buffers
- High visibility crosswalks
- Advanced Yield Lines
- Advanced Stop Lines
- Pedestrian Signage & Flashing Beacons
- Curb Extensions



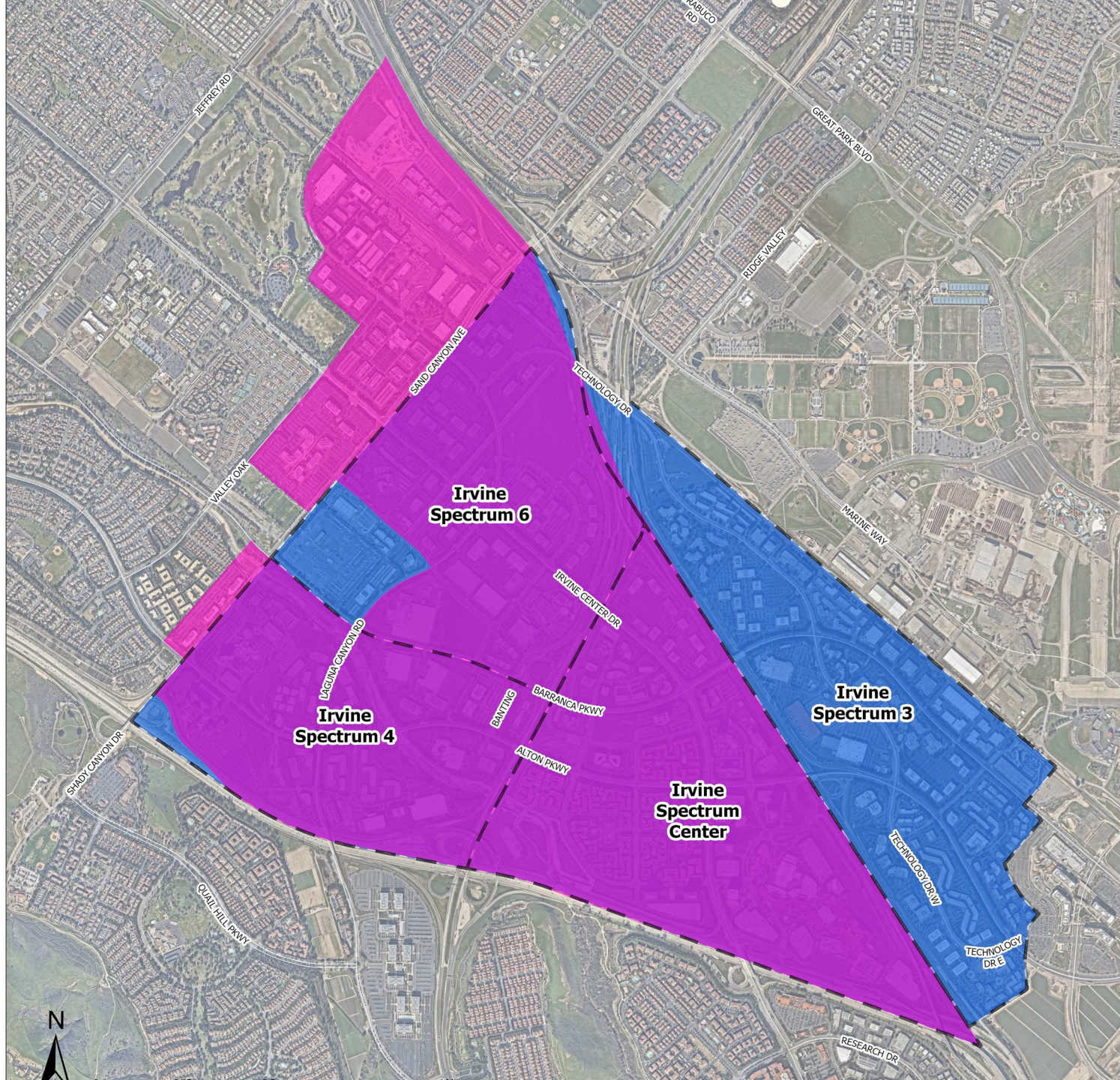


# Bikeways

- Types of Bikeways
  - Bike paths
  - Bike lanes
  - Colored bike lanes
  - Buffered bike lanes
  - Bike Routes
  - Sharrows
  - Greenback sharrows
  - Separated Bike Lanes



**What elements are important to you when thinking about transportation in your neighborhood? (Use underscore\_ for more than 1 word response)**



**Thinking of the area in the previous map, close your eyes and picture what would be included in your ideal neighborhood.**



# Next Steps



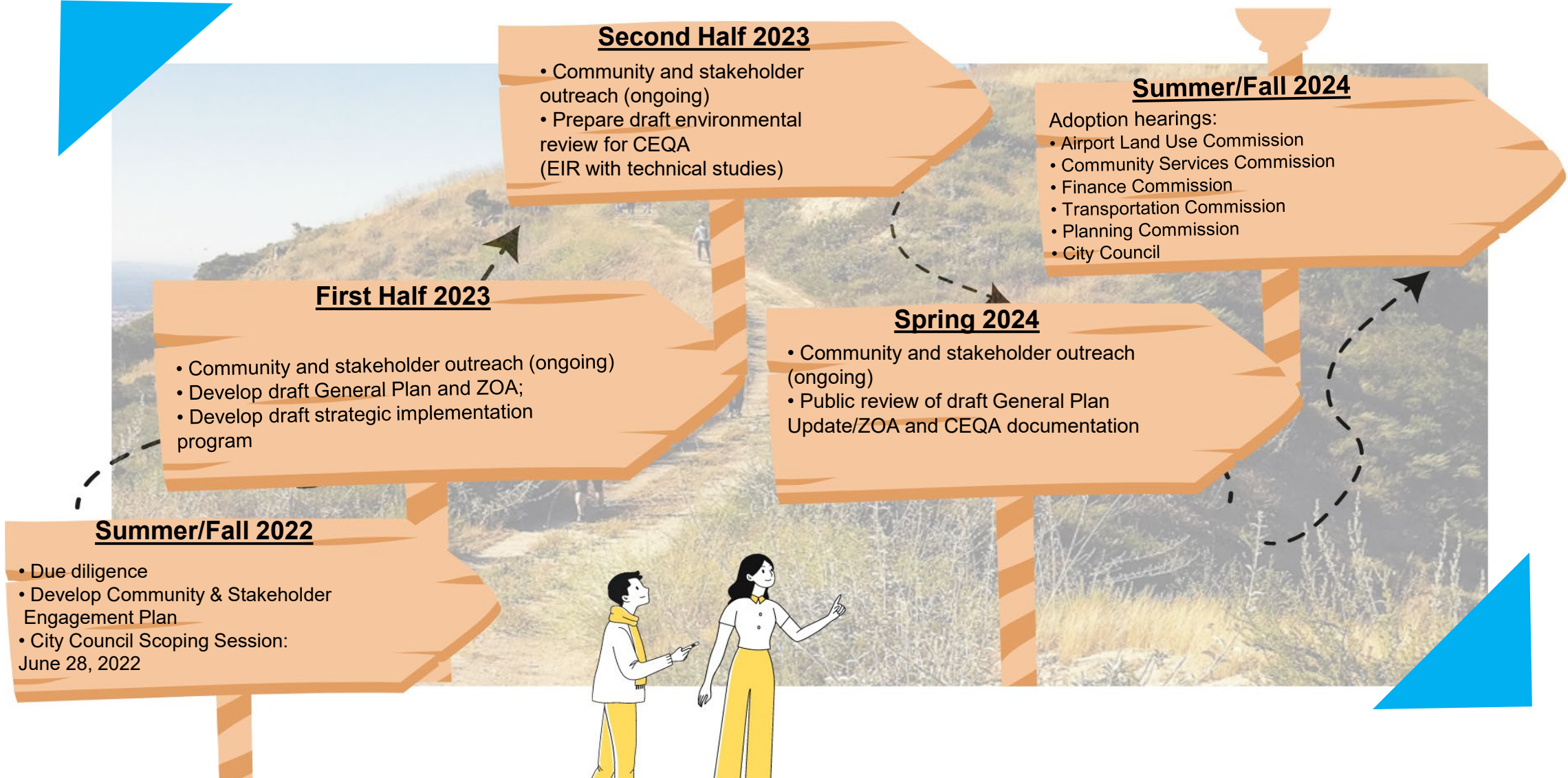
# General Plan Update Community Workshop Open House

Tomorrow, Thursday, May 25<sup>th</sup>  
at 6:00 pm

Los Olivos Community Center  
101 Alfonso, Irvine, CA 92618



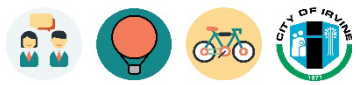
# General Plan Update Timeline





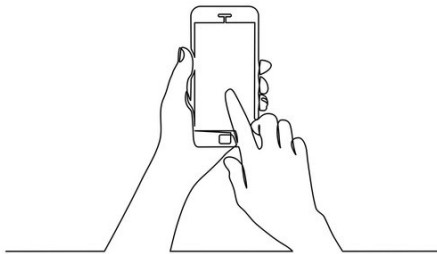
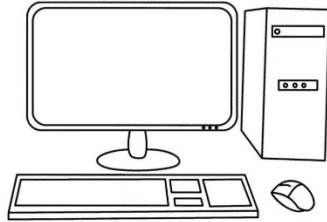
# IRVINE

2045 GENERAL PLAN



# Contact Us

---



**Website:** *Irvine2045.org*

**Phone Number:** 949-724-6581

**Email:** *gpupdate2045@cityofirvine.org*