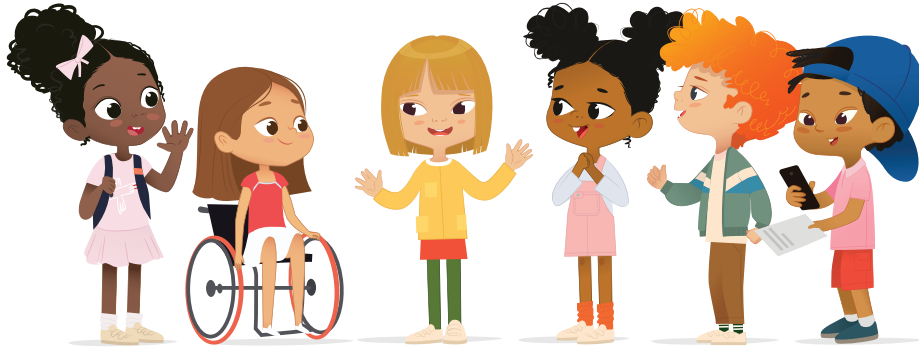


the City of Irvine



for Kids!


About the City of Irvine



Irvine was incorporated as a City on December 28, 1971. Since then, it has become a nationally recognized City that spans 66 square miles and boasts a population of 310,250 people. Irvine is recognized as one of America's safest and most successful master-planned urban communities, with top-rated schools, a thriving business atmosphere, active plans

to protect our environment, and respect for diversity. These factors all contribute to Irvine's enviable quality of life.

Irvine is a family-friendly City that includes more than 16,000 acres of parks, sports fields, and open space, and is the home of Great Park. Learn more about the City of Irvine in the pages of this book. For more information, visit cityofirvine.org.



CITY OF IRVINE MISSION STATEMENT

The Mission of the Employees of the City of Irvine is to create and maintain a community where people can live, work, and play in an environment that is safe, vibrant, and aesthetically pleasing. We are one team... that exists to serve our community in the continual pursuit of a City that offers an exceptional quality of life. We have one focus... to differentiate ourselves by maintaining an intense focus on establishing Irvine as a learning organization that will serve as an incubative launching pad for people, ideas, programs, and careers. And, we are One Irvine... through embrace of a team-oriented approach by living our values every day.

The City of Irvine's five values reflect the interests and needs of the community, and the level of service they expect and desire.

Our five values are:

HUMILITY
We place the needs of the team over individual self-interest.

INNOVATION
We do common everyday things in an uncommonly precise way, while remaining open to new ideas.

EMPATHY
We recognize the things we say and do have an impact on those around us, we use our engaging words and actions to bring people together, and we avoid behaviors that rip people apart.

PASSION
We know how fortunate and lucky we all are to work for the City of Irvine, and we bring a can-do attitude to our work.

INTEGRITY
We do what we say we're going to do, and hold ourselves accountable for living our values each and every day.

OUR COMMITMENT
To provide quality municipal services.

OUR BELIEF
Cooperation and teamwork will help us achieve our mission.

Message from the Mayor



Thank you for your interest in the City of Irvine. Irvine is a special place because of its unique history and its focus on

the future. As a young person, you are a vital part of our City's growth and future. There is a lot of power in youth — we want to hear your voices and let you have a seat at the table. I'm excited to help you take those first steps by learning more about our City in this book.

Mayor Farrah N. Khan

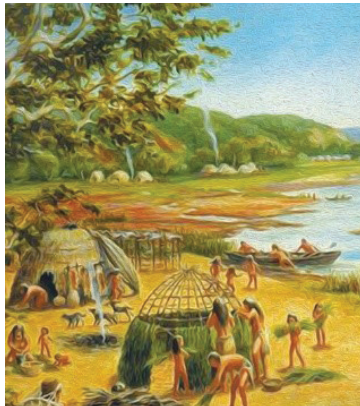
More Inside!

- Irvine History..... Pages 2–4
- Government..... Pages 5–7
- Demographics..... Pages 8–9
- Fun Facts..... Page 10
- Sister Cities..... Page 11
- Games..... Pages 12–13
- Get Involved..... Page 14
- Learn More..... Page 16

History of Irvine

Early Civilization

Archaeological research establishes prehistoric man in the Irvine area at least 12,000 years ago, possibly even as early as 18,000 years ago. Scattered evidence of early campsites and rock shelters can be seen in the undeveloped parts of the City.



Courtesy Irvine Historical Society Museum

Two Native American groups, the Gabrielinos and Juaneños, inhabited the Irvine area around 2,000 years ago. Villages were located near the present San Joaquin Marsh and the San Joaquin Golf Course. The Gabrielinos and Juaneños enjoyed an abundant food supply of shellfish, waterfowl, and land animals. They lived in round, woven huts and were excellent basket weavers and jewelry makers of seashell and stone.

1700s–1800s

Gaspar de Portola, a Spanish explorer, entered the San Joaquin Valley in 1769, abruptly ending the tranquil life of the Native Americans. With the Spanish came forts, missions, and herds of cattle. The King of Spain parceled out lands for missions and a few large, private land grants. In 1821, after gaining independence from Spain, the Mexican government secularized the missions, assumed control of land holdings, and began distributing ranchos to influential Mexican citizens who applied for grants.



Gaspar de Portola

Three large Spanish/Mexican grants made up Rancho Santiago de Santa Ana, Rancho San Joaquin, and Rancho Lomas de Santiago. The land later became the Irvine Ranch. The oldest and only Spanish grant, Rancho Santiago de Santa Ana, was granted to the Yorba family and confirmed by the Mexican government.

1800s–1900s

In 1837, San Juan Capistrano mission lands were granted to Don Jose Sepulveda, later becoming Rancho San Joaquin. Rancho Lomas de Santiago was granted to Teodosio Yorba in 1846. In that year, the Mexican army was defeated in the final battle of the Mexican-American War. The Treaty of Guadalupe was signed and California became part of the United States.

The Congressional Act of 1851 forced landholders to reapply to the Board of Land Commissioners to get valid title to their ranchos. Original grantees, however, produced large families who were deeding, selling, and trading portions of the large



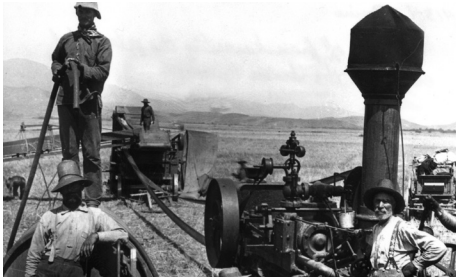
The Irvine Ranch lands were originally devoted to cattle and sheep. Operations shifted to agriculture in the late 1800s.

ranchos to family members and outsiders. Rancho Santiago de Santa Ana fell prey to tangled titles. In 1868, Abel Stearns, an outside investor, was successful in his suit to dissolve

the rancho and divide the property among the claimants, four of whom were prosperous sheep ranchers: James Irvine, Benjamin and Thomas Flint, and Llewellyn Bixby.

Meanwhile, Don Jose Sepulveda, owner of Rancho San Joaquin, was heavily in debt. In 1864, during the year of the Great Drought, he sold his 50,000 acres to Irvine, the Flints, and Bixby for \$18,000. In 1866, they acquired the 47,000-acre Rancho Lomas de Santiago for \$7,000. Much of the ranch was not suitable for cultivation, but with the Santa Ana River on the north, it secured valuable water rights.





Agricultural enterprises fueled the economic development of Irvine in the years leading up to World War II. By 1910, Irvine Ranch was known as one of the state's most productive growing enterprises.

The Irvine, Flint, and Bixby ranches were devoted to sheep grazing, although tenant farming was permitted in the 1870's. In 1878, James Irvine acquired his partners' interest for \$150,000. His 110,000 acres stretched 23 miles from the Pacific Ocean to the Santa Ana River.

James Irvine died in 1886. In 1894, his son, James Irvine II, came into full possession of the ranch — which he incorporated into the Irvine Company just one year later. James Irvine II shifted ranch operations to field crops, including olive and citrus orchards.

1900s–2000s

During World War I, agriculture intensified. By 1918, 60,000 acres of lima beans were grown on the Irvine Ranch. During World War II, two Marine Corps facilities were built



Above, lima beans and dry crops are tended to on the Irvine Ranch, which would become known as the top producer of lima beans in the world. By 1918, 60,000 acres of lima beans were grown on the Irvine Ranch.

on land sold to the government by the Irvine Company. James Irvine II died in 1947 at the age of 80. Presidency of the Irvine Company fell to his son, Myford, who began opening small sections of the ranch for urban development. Myford died in 1959. In 1959, the Regents of the University of California asked the Irvine Company for 1,000 acres to build a new campus. The Irvine Company agreed, and the regents accepted the land and purchased an additional 500 acres.

The university's consulting architect William Pereira and Irvine Company planners drew up master plans for a city of 50,000 people around the university with industrial zones, residential and recreational areas, commercial centers, and greenbelts. The Irvine Industrial Complex West (now known as the Irvine Business Complex) opened and the villages of Turtle Rock, University Park, Culverdale, the Ranch, and Walnut were built by 1970.

City Incorporates in 1971

On December 28, 1971, the residents of these communities voted to incorporate a substantially larger City than that envisioned by the original Pereira plan, in order to control the future of the area and protect its tax base.



Petitions calling for Irvine's cityhood are counted.

Historical Residents of Irvine



Don Jose Sepulveda

Don Jose Sepulveda acquired Rancho San Joaquin in a Mexican land grant in 1841. Sepulveda, known as the most famous horseman of his era, enjoyed life as one of the wealthiest cattle barons in California. Severe droughts in 1863–1864 forced Sepulveda to sell his lands. The 50,000-acre parcel was sold to James Irvine and his three partners for \$18,000 — about 37 cents an acre.



James Irvine

James Irvine immigrated to America in 1846 from Ireland. He worked in the gold industry in San Francisco before purchasing interest in a commission house. Friends began a venture raising sheep, and Irvine financed a 50 percent share in the company. The land, which would become the Irvine Ranch, was purchased in 1864 in three phases, beginning with Sepulveda's Rancho San Joaquin. By 1878, Irvine bought out his partners to become the sole owner of the ranch.



James Irvine II

James Irvine II, James Irvine's only son, inherited the ranch on October 16, 1892, his 25th birthday. In 1894, he incorporated the ranch to the Irvine Company and shifted emphasis from cattle and sheep to agriculture. The Irvine Ranch became the largest producer of lima beans and the second largest producer of Valencia oranges. The ranch produced much of the world's supply of chili peppers, walnuts, avocados, strawberries, and celery.



Myford Irvine

James Irvine II's unexpected death in 1947 left the presidency of the Irvine Company to his only remaining child, Myford Plum Irvine. Myford led the ranch away from his father's vision and straight into residential and commercial development. Myford was the first major landowner to allow development to proceed southwards in the county.



More than 20,000 businesses work in Irvine, with industries focused on life sciences, information technology, aerospace, advanced manufacturing, and digital arts and media. Pictured above is the 2,600-acre Irvine Business Complex, one of two major business centers in the City.



The City of Irvine is consistently ranked one of the top places to raise a family in the United States and the safest City for its size in America.

Irvine Today and Beyond

By 2004, the City of Irvine had a population of 171,700 and a total land area of 55.2 square miles. Future plans called for a population of more than 200,000 on 46.7 square miles by the year 2020. Irvine exceeded those estimates in 2019 and currently has a population of 310,250 that spans 66 square miles!

In 2021, Irvine celebrated its 50th anniversary of incorporation. For five decades, residents and businesses have chosen to call the City of Irvine home because of its dedication to maintain its reputation as one of the safest, master-planned, business-friendly communities in the United States.



Irvine boasts 60 community and neighborhood parks, more than 275 athletic and sports fields, and 16,000 acres of preserved open space. The City is also home to more than 500,000 trees!



The City is the success it is today because of the more than 310,250 community-minded citizens who have chosen Irvine as their home.



Great Park spans approximately 1,300 acres of park space and includes a 194-acre Sports Complex, an art gallery, the Great Park Balloon and Great Park Carousel, kids playgrounds, open space, and walking trails.



Today, the City offers hundreds of classes, activities, and programming for all ages and interests, ranging from STEM-based programming to sports leagues to arts and crafts.

Your Government

Mayor & City Council

The City of Irvine was incorporated on December 28, 1971, under general laws of the State of California. The City operates under a charter that was adopted in 1975, with a city council-manager form of government. The Irvine City Council is made up of a Mayor and four Councilmembers, for a total of five people elected by the citizens at large.

The mayor is popularly elected and serves a term of two years. City Councilmembers each serve a term of four years, and are popularly elected on a staggered basis. The Mayor and Councilmembers may serve no more than two full consecutive terms.

Current Irvine City Council

Irvine's current City Council includes:

- Mayor Farrah N. Khan
- Vice Mayor Tammy Kim
- Councilmember Larry Agran
- Councilmember Mike Carroll
- Councilmember Kathleen Treseder

City Elections

General Municipal elections for the City Council are held every two years. Any legal resident of the City who is 18 years or older and is a registered-voter may run for Mayor or Council.

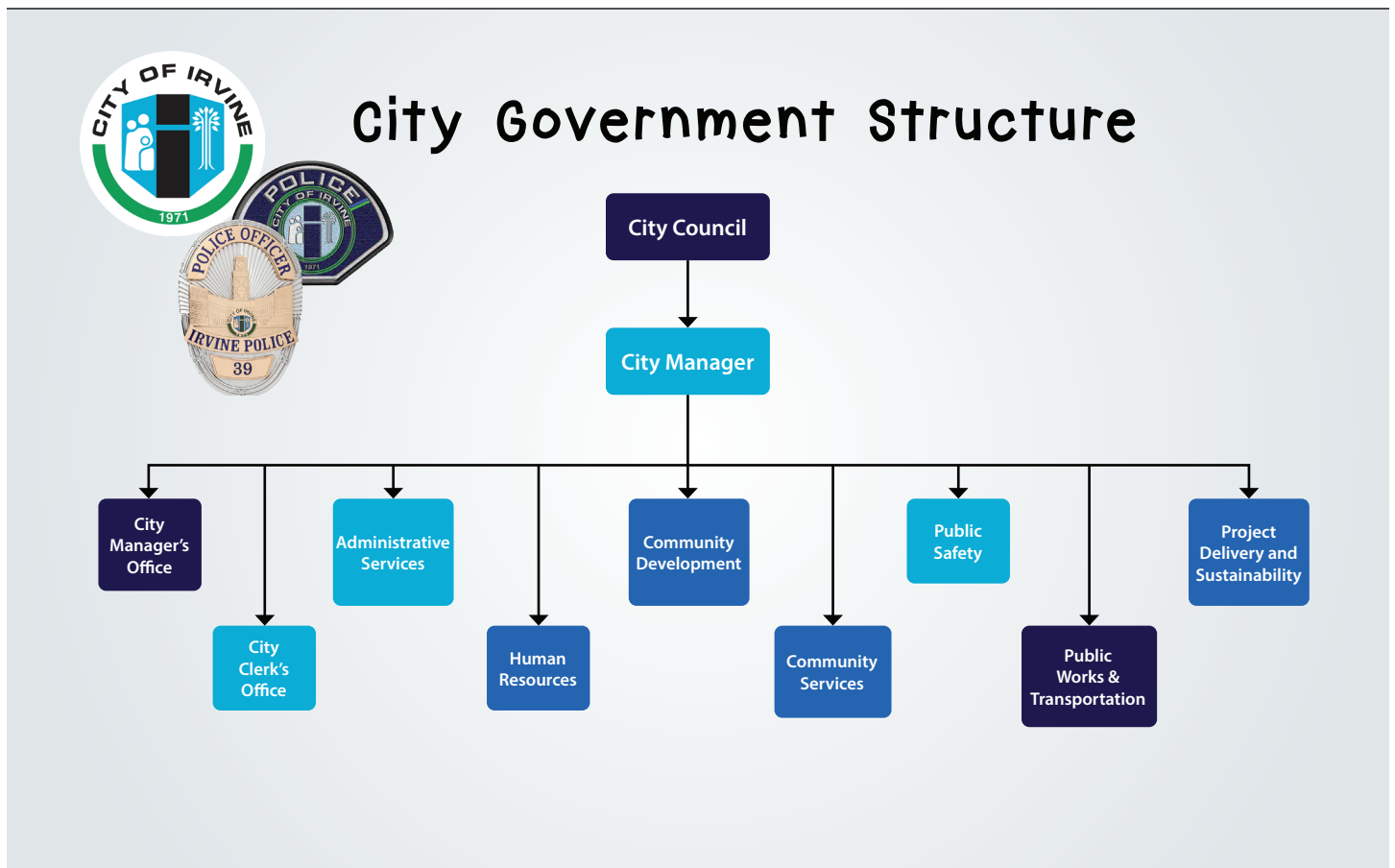


Irvine City Hall is located at 1 Civic Center Plaza. City Council meetings are held the second and fourth Tuesday of each month in the City Council Chamber.

City Departments

The City of Irvine's government functions are coordinated by nine operating departments.

Together, these departments manage and perform all of the City's business and services.



Functions of Each City Department

City Manager's Office

cityofirvine.org/citymanagersoffice



The City Council sets goals and policies that represent the views of the citizens of Irvine and provides direction to the City Manager to carry out those goals. The City Manager's Office is then responsible for the implementation of these decisions and the coordination of those efforts through the various City departments.

The City Manager's Office focuses on legislative and advocacy support, policy implementation, budget and economic development, real property management, health and wellness operations, social service coordination, strategic planning, and communication services.

Great Park

yourgreatpark.org

The City Manager's Office also oversees Great Park development. Marine Corps Air Station El Toro closed February 16, 2005. The closure of the base marked an end to 60 years of military history and the beginning of a unique public-private partnership to build a world-class park full of innovative and sustainable amenities.

Through a public-private partnership between the City and developer FivePoint, more than 500 acres of park space has been completed based on a visionary plan for 1,300 acres of amenities and park space. This includes a 194-acre Sports Complex, which features space for tennis, soccer, volleyball, basketball, softball, and lacrosse, as well as existing features like trails, children's play areas, the Great Park Balloon, Carousel, and Palm Court Arts Complex, to offer space for nearly everyone to enjoy the great outdoors.

In July 2022, the City approved the [Great Park Framework Plan](#) to guide the next phase of development. The plan's initial phase brings 300 acres of exciting new park amenities, including a world-class outdoor amphitheater, new cultural attractions, and expansive space dedicated to unprogrammed passive enjoyment. The next phase of Great Park draws on extensive community input to deliver an expanding array of new opportunities to secure the park's place among the world's greatest metropolitan parks.

Human Resources

cityofirvine.org/humanresources

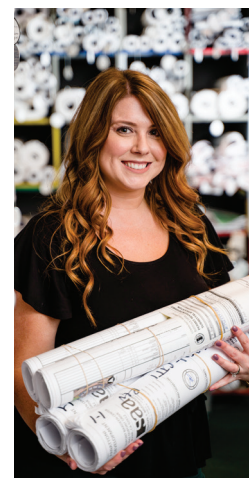
The Human Resources & Innovation Department facilitates the administrative and communication functions of the City as specified by the City Council and as required by the operation departments. The main focus is to implement administrative policies that support personnel and fiscal operations and effective communications with the Irvine community.



Community Development

cityofirvine.org/communitydevelopment

Irvine is America's largest master-planned City and is known for its beautiful open spaces, charming neighborhoods, and vibrant commercial centers. The Community Development Department ensures Irvine remains a livable and sustainable City. Accomplishing this takes wise planning and efficient service. Community Development works closely with City departments to establish and carry out goals to preserve Irvine's quality of life.



Community Services

cityofirvine.org/communityservices

The Community Services Department offers quality recreation and human services programs ranging from children's camps and classes, to senior citizen support, to animal care services. Additionally, the department cooperates with community organizations, local businesses, advisory bodies, and other City departments to ensure an integrated response to community concerns. The Community Services Department is committed to bringing exciting and beneficial activities to all Irvine citizens, as well as planning and rehabilitating top-of-the-line parks and community facilities.



Public Works & Transportation

cityofirvine.org/publicworks



The Public Works division develops, builds, and maintains the City's infrastructure, including streetscapes, open space, City parks (community and neighborhood), athletic fields, bike trails, roadways, traffic signals,

and more. Public Works makes sure the City landscaping looks green and healthy; roads, walkways, and bike trails are safe; and everything built (from storm drains to streets) is solid and secure.

Irvine encompasses more than 66 square miles, served by multiple modes of transportation, including bus, train, biking, and walking. The Transportation division works to serve residents, commuters, and pedestrians by overseeing all facets of transportation management to ensure you can travel safely and effectively throughout Irvine.

City Clerk's Office

cityofirvine.org/cityclerk

The City Clerk's Office serves as a partner in democracy and is committed to quality service, innovation, continuous improvements, comprehensive use of resources, and preservation of history. The City Clerk's Office is also responsible for legislative proceedings, Political Reform Act filings, elections, records management, and public records, such as meeting agendas and minutes.



Administrative Services Department

cityofirvine.org/administrativeservices

The Administrative Services Department oversees the financial operations of the City in order to serve City departments, employees, and residents.

The department works in accordance with laws, regulations, and City policies, and is responsible for ensuring City projects are funded, producing the City's budget and business plans, and purchasing materials and services for the City.

Public Safety

cityofirvine.org/publicsafety

The Public Safety Department has consistently provided excellent service to the residents



and businesses of Irvine. With a keen sensitivity to the needs and concerns of the community, the Irvine Police Department seeks to work as partners with the residents, schools, churches, and businesses in developing safety programs and awareness.

The Irvine Police Department is comprised of six distinct divisions that operate under the direction and management of the Chief of Police: Administration, Business Services, Operations, Support Services, Office of Professional Development, and Office of Professional Standards.

Over the years, Irvine has been consistently recognized as one of the safest cities in the United States thanks to the hard work of the Irvine Police Department and its partnership with its residents committed to community values.

Project Delivery & Sustainability

cityofirvine.org

Irvine takes great pride in being a regional leader in advancing projects and initiatives that are good for our City and environment. This department creates programs that will ensure Irvine remains innovative, modern, and accessible to our community.

Environmental Programs

cityofirvine.org/environmentalprograms

The Environmental Programs division is housed in the Department of Project Delivery and Sustainability. It leads the City's efforts on environmental sustainability and climate change action. The City kicked off the development of its first Climate Action and Adaptation Plan (CAAP) in June 2021. By setting ambitious but achievable emissions reduction targets and laying out thoughtfully planned greenhouse gas (GHG) emissions reduction and climate adaptation measures, the CAAP will lay a pathway to achieve the City's climate goals of becoming carbon neutral by 2030.



Irvine Demographics

Irvine's strength is its people. The City is the success it is today because of the hardworking, community-minded citizens who have chosen Irvine as their home. Irvine's population has grown significantly over the past 50 years. Since 1990, our population has grown an average of 37% every decade, and since 2020, that figure has jumped 11%! Because Irvine is a relatively new City and started with a young population base, only 12.7% of Irvine's population was in the 55 and older category in 1990. In the future, much of the population is expected to be older than 55. Find more demographics at cityofirvine.org/demographics.

Irvine is recognized as one of the most ethnically diverse and fully integrated cities in the country. It embraces and celebrates diversity in all aspects and fosters an environment that represents the many cultures, backgrounds, and perspectives that make up its unique and dynamic community. Learn more at cityofirvine.org/dei.



Age Range

- ▶ **14 & Younger:** 18.9%
- ▶ **15–24 Years:** 16.7%
- ▶ **25–34 Years:** 16.6%
- ▶ **35–44 Years:** 14.8%
- ▶ **45–54 Years:** 13.9%
- ▶ **55–64 Years:** 11.8%
- ▶ **65 & Older:** 14%

Ethnicity

- ▶ **White:** 44.9%
- ▶ **Asian:** 43.6%
- ▶ **White alone (not Hispanic or Latino):** 38.3%
- ▶ **Hispanic or Latino:** 10.7%
- ▶ **Two or more races:** 7%
- ▶ **Black/African American:** 1.5%
- ▶ **Native Hawaiian or other Hispanic Islander:** 0.4%
- ▶ **American Indian/Alaskan Native:** 0.2%

Population

▶ 2022: 310,250	▶ 2005: 179,975
▶ 2021: 307,670	▶ 2000: 141,200
▶ 2020: 277,988	▶ 1995: 120,000
▶ 2019: 274,641	▶ 1990: 109,700
▶ 2018: 270,260	▶ 1985: 84,400
▶ 2017: 263,295	▶ 1980: 60,600
▶ 2016: 253,925	▶ 1975: 31,750
▶ 2015: 249,010	▶ 1971: 10,081
▶ 2010: 212,375	

Sources: Statistics are according to the latest figures from the 2020 Census Results by the United States Census Bureau. Figures may not add up to 100% due to reporting methodology and margins of error. See data.census.gov for more information.

Registered Voters

- ▶ **Registered Voters:** 151,483
- ▶ **Republican:** 37,479
- ▶ **Democrat:** 62,200

Source: ocvote.gov





Education

- ▶ **High School Enrollment:** 13,399 students
- ▶ **College Enrollment:** 33,336 students
- ▶ **Irvine Unified School District Students Enrolled:** 41,929
- ▶ **Middle Schools:** 12
- ▶ **Elementary Schools:** 30
- ▶ **High Schools:** 7

Colleges

- ▶ **UC Irvine:** 37,243 students enrolled
- ▶ **Concordia University:** 4,123 students
- ▶ **Irvine Valley College:** 14,284 students

Sources: data.census.gov, iusd.org/schools, uci.edu/university-facts, cui.edu/aboutcui, ivc.edu/about

Housing

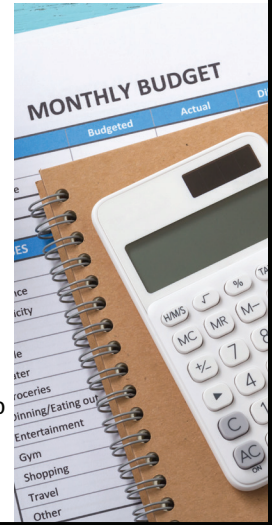
- ▶ **Housing Units:** 114,131
- ▶ **Median Housing Value:** \$861,700
- ▶ **Median Rent:** \$2,425

Source: data.census.gov



Average Annual Household Income

- ▶ **Less than \$10,000:** 7.8%
- ▶ **\$10,000–\$14,999:** 2.6%
- ▶ **\$15,000–\$24,999:** 3.5%
- ▶ **\$25,000–\$34,999:** 4.3%
- ▶ **\$35,000–\$49,999:** 6%
- ▶ **\$50,000–\$74,000:** 11.3%
- ▶ **\$75,000–\$99,999:** 11.1%
- ▶ **\$100,000–\$149,999:** 20%
- ▶ **\$150,000–\$199,999:** 12.3%
- ▶ **\$200,000 or More:** 21.2%



Employment

Employment Base: 217,846

Top Industries (by Number of Employees)

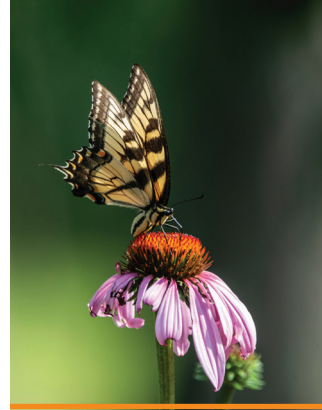
- ▶ **Educational Services, and Health Care and Social Assistance:** 29,557
- ▶ **Professional, Scientific, and Management, and Administrative and Waste Management Services:** 25,705
- ▶ **Manufacturing:** 17,902
- ▶ **Finance and Insurance, and Real Estate and Rental and Leasing:** 16,016
- ▶ **Retail Trade:** 10,723
- ▶ **Arts, Entertainment, Recreation, Accommodation and Food Services:** 10,451
- ▶ **Wholesale Trade:** 4,897
- ▶ **Other Service, Except Public Administration:** 4,798
- ▶ **Construction:** 2,740
- ▶ **Public Administration:** 2,571

Source: data.census.gov

Fun Facts About Irvine

Did you know that the City of Irvine was once the lima bean capital of the world? There are many interesting and little-known facts about our great City. Check them out!

The agapanthus, also known as the Lily of the Nile, is the City's official flower. It has funnel-shaped flowers with varying shades of blue colors with white flowering.



The official insect of the City is the Western tiger swallowtail, commonly known as the swallowtail butterfly. Its wings are yellow with black stripes, and it has blue and orange spots near its tail.

Michelson Drive was named after Dr. Albert Michelson, a famous physicist who was the first person to accurately measure the speed of light. Ironically, Michelson Drive once had one of the slowest speed limits of all the roads in Irvine.

Lima beans once encompassed 60,000 acres in Irvine. During the peak of production, Irvine was one of the largest producers of lima beans in the world.



The Irvine Company donated 1,000 acres and sold over 500 acres of land to the University of California, Irvine. Classes began in September 1965. The mascot for UC Irvine is the ant-eater. Go Anteaters!



The third National Scout Jamboree was held in 1953 on the Irvine Ranch. More than 51,000 Scouts attended the weeklong event. After, a main road in Irvine was named in honor of the event — known today as Jamboree Road.



Did you know asparagus is the official vegetable of the City of Irvine? Look closely at our City logo and you can also find it represented there.

Sister Cities Foundation

Recognizing the need to foster goodwill and understanding between Irvine and other nations, the City established this international program in 1989 to engage Irvine's diverse community.

About one hour northeast of Tokyo is Tsukuba, a modern, planned city with a population of 226,963. A large community of international scholars and researchers gives the city a unique cosmopolitan quality. Tsukuba has achieved worldwide recognition as a major scientific and technology center, and has striking demographic, economic, academic, cultural, and geographic similarities to Irvine.



1 Tsukuba, Japan

Hermosillo, capital of the state of Sonora, is about 250 miles south of Tucson, Arizona. With a population of 600,000, the region maintains a strong agriculture and ranching industry. Because of its nearby sandy beaches, Hermosillo is also developing its tourism industry. The City of Hermosillo is home to both light and heavy industrial development, and is the center for commerce in Sonora.



2 Hermosillo, Mexico

Located nearly 20 miles from Taipei, the capital of Taiwan, Taoyuan has a population of approximately 380,000. As a result of rapid economic development, Taoyuan has been transformed from a rural, agricultural community to a modern, industrial metropolis. It is one of the oldest cities in Taoyuan County and serves as the region's center of politics, culture, and business.



3 Taoyuan, Taiwan

With a population of more than 430,000, Seocho-gu is home to many cultural and art-related facilities and historical sites. Seocho-gu is referred to as the "City of Corporation and IT Industry," with major companies such as Samsung and Hyundai headquartered within its borders. It is the largest of 25 districts in Seoul and boasts a variety of first-class cafes, restaurants, and hotels.



4 Seocho-gu, Korea





Got Game?

Word Search Puzzle

Can you find these Irvine-related words? Search forwards, backwards, up, down, and diagonally!

ASPARAGUS
CITY
CLERK
COMMUNITY
COUNCIL

DARE
ELECTION
FAMILY
FLEXIBILITY
INNOVATION

INTEGRITY
IRVINE
JAMBOREE
MAYOR
PARK

POLICE
PROFESSIONALISM
RESPONSIVENESS
SERVICES
SHELTER

E	G	L	L	Y	A	E	B	I	S	S	J	E	N	S
U	E	N	C	J	T	N	L	E	N	S	L	O	V	E
P	J	N	R	L	F	I	A	T	S	E	B	R	Y	C
O	A	Y	S	E	E	V	L	I	C	N	U	O	C	K
L	M	L	V	S	E	R	V	I	C	E	S	N	R	E
I	B	I	E	S	F	I	K	I	B	V	Y	A	A	M
C	O	M	M	U	N	I	T	Y	I	I	P	E	S	C
E	R	A	E	H	E	Y	S	G	H	S	X	L	H	I
O	E	F	Y	T	I	R	G	E	T	N	I	E	E	S
I	E	I	N	N	O	V	A	T	I	O	N	C	L	F
L	R	O	Y	A	M	U	T	D	U	P	O	T	T	F
I	Y	A	S	P	A	R	A	G	U	S	E	I	E	U
M	S	I	L	A	N	O	I	S	S	E	F	O	R	P
R	O	L	F	G	G	L	O	U	E	R	I	N	R	P
E	A	Y	I	A	J	A	B	F	V	R	N	X	P	I

Check your answers on Page 15.

Got Game?

Word Match & Scramble Challenge



Word Match Fill-Ins

Test your knowledge and fill in the blanks to complete the sentence.

1. The _____ is made up of five elected officials who set goals and policies that represent the views of Irvine residents.
2. Government functions are coordinated by _____ operating departments.
3. Three large Spanish/Mexican land grants made up the land which later became the _____.
4. _____ is the City's official insect.
5. The City's Mission Statement includes five core values: innovation, integrity, _____, flexibility, and _____.
6. Irvine has partnered with four _____ cities around the world to establish a sense of global community.
7. The _____ is responsible for legislative proceedings, elections, records management, and public records.
8. _____ led the Irvine Company into residential and commercial development.

Word Bank

- City Clerk's Office
- Grasshopper
- Sister
- Mayor
- City Council
- Professionalism
- Irvine Ranch
- Six
- Western Swallowtail Butterfly
- Honesty
- Myford Irvine
- Eight
- Responsiveness

 Check your answers
 on Page 15.

Word Scramble Challenge

Challenge your brain! Can you unscramble the following words?

Hint: All the words are related to what you've learned about the City of Irvine in this book.

1. DVPEEONLTEM
2. IRLEIONBGAS
3. CPULIB SOKWR
4. EASMJ VENIIR
5. UKATBUS
6. EHLOSMINC
7. TYCI ENRGMAA
8. OOHRIHOBGEND
9. TGERA APKR
10. OGAAINROINZT
11. LLHREOMOIS
12. OESJ SUPDEVLAE

Get Involved

There are many exciting opportunities for youth in the City of Irvine. Below are some of the ways you can become more involved in your community.



Middle School Program

The City of Irvine is dedicated to recognizing and promoting young people as valued and capable members of our community. The goal of the Middle School Program is to engage youth in positive social-recreational activities during non-school hours. Youth are encouraged to participate in the development and implementation of program activities that focus on community service, personal skill development, and social recreation. Services are provided in cooperation with the Irvine Unified School District. Learn more at cityofirvine.org/msp.



High School Youth Action Team

The High School Youth Action Team (HSYAT) provides high school students the opportunity to participate in the development, implementation, and evaluation of services for their peers. The program consists of student representatives from local Irvine high schools. HSYAT staff organizes teen activities and represents their peers at various community groups. The program focuses around the following three objectives: youth leadership, community service, and social-recreational. Learn more at hsyat.org.



D.A.R.E. Program

The Irvine Police Department Drug Abuse Resistance Education Unit (D.A.R.E.) focuses on prevention through education. D.A.R.E. officers provide students with the specific tools and techniques to resist peer pressure and individual involvement in gangs, criminal activity, drug abuse, alcohol abuse, and Internet safety. The program is delivered by highly trained and dedicated sworn police officers who teach at school sites throughout Irvine. Learn more at cityofirvine.org/dare.



Leaders in Training

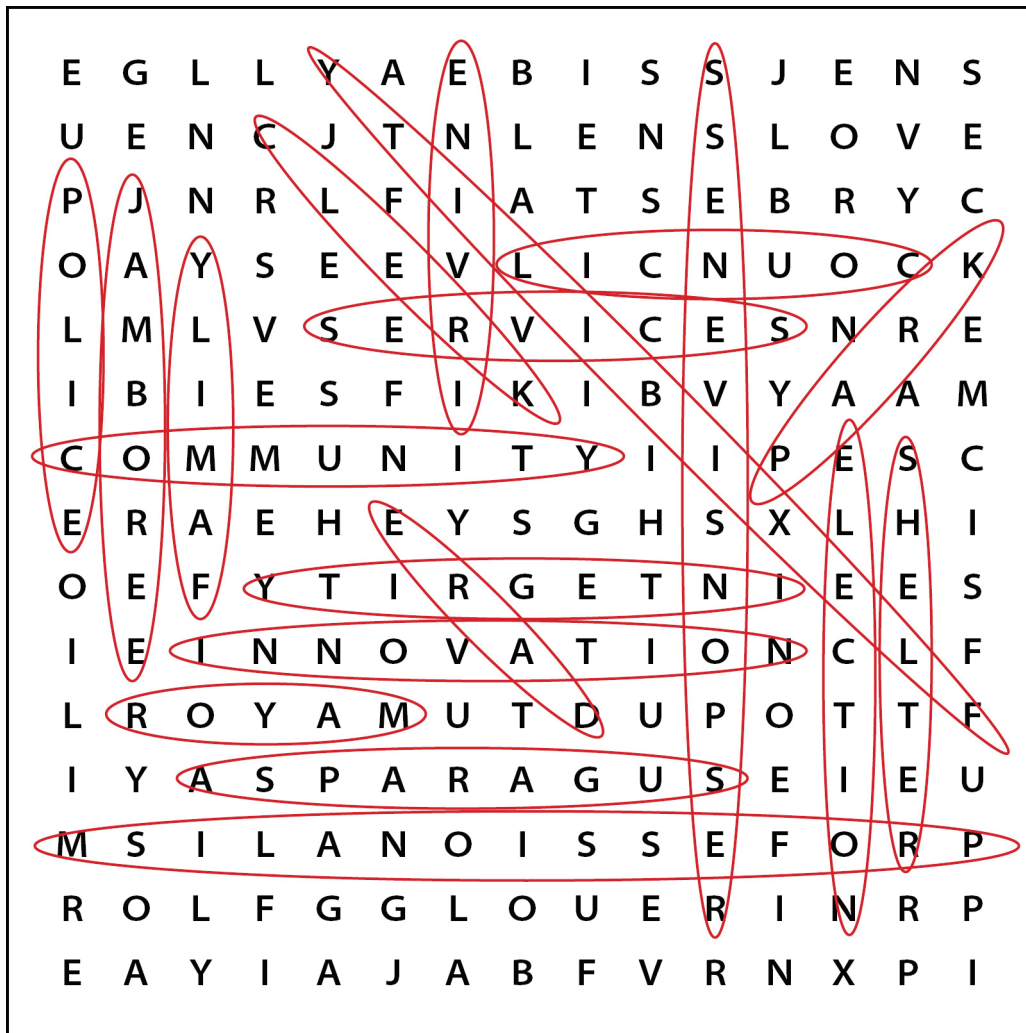
This work experience and leadership development program provides enrichment opportunities for teens to contribute to their community while developing life skills through teamwork, social interaction, time management, and goal setting. Assignments at various City sites — including community centers and parks, the Irvine Fine Arts Center, and Great Park — may include working with children, office work, and more. Search for opportunities and sign up at yourirvine.org.

Got Game?

Check Your Answers!



Word Search Puzzle: Answer Key



Word Scramble Challenge Answer Key

1. Development
2. Gabrielinos
3. Public Works
4. James Irvine
5. Tsukuba
6. Michelson
7. City Manager
8. Neighborhood
9. Great Park
10. Organization
11. Hermosillo
12. Jose Sepulveda

Word Match Answer Key

- | | | |
|-----------------|-------------------------------------|------------------------|
| 1. City Council | 4. Western Swallowtail Butterfly | 6. Sister |
| 2. Eight | 5. Professionalism & Responsiveness | 7. City Clerk's Office |
| 3. Irvine Ranch | | 8. Myford Irvine |

Learn More!



We hope you enjoyed learning about the City of Irvine. If you want to learn more, visit cityofirvine.org, or sign up for our weekly e-newsletter *Community Link* at cityofirvine.org/subscriptions.

Tune in to ICTV Channel 30 for the latest community news and happenings. Receive current and accurate information on local issues, community activities, and City services, and enjoy a variety of non-commercial programming. ICTV can be viewed within the City on Cox Communications Channel 30 and within Southern California on AT&T U-verse Channel 99. Visit cityofirvine.org/ICTV for live and on-demand programming.

Follow us on social media:

 facebook.com/cityofirvine

 twitter.com/city_of_irvine

 instagram.com/cityofirvine

 youtube.com/ictv30

The City of Irvine would like to thank the Irvine Historical Society and Judy Gauntt Liebeck for their contributions to this project. This publication was proudly created for you by the City of Irvine Public Information Office.

