



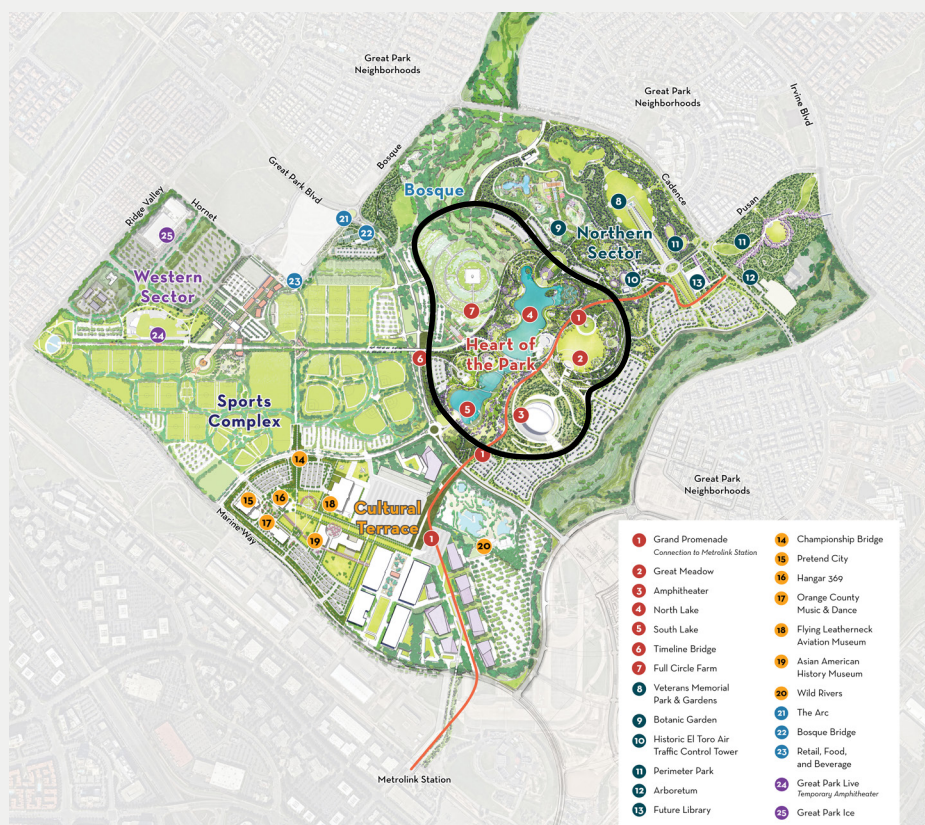
CONSTRUCTION NOTICE

Heart of the Park

The City of Irvine is starting work on the next phase of construction in the Heart of the Park, which includes areas identified in the Great Park Framework Plan as the Amphitheater, Full Circle Farm, Great Meadow, North Lake, South Lake, and portions of the Grand Promenade. This project will grade approximately 210 acres in the area between Cadence and Great Park Boulevard. The project scope includes excavation, fill, remedial grading, and relocation of an existing stockpile.

HOURS & SCHEDULE

- Work will occur between 7 a.m. and 3:30 p.m. on weekdays and 9 a.m. and 3 p.m. on weekends and should not impact Great Park neighborhoods, motorists, or the use of the Great Park sports fields.
- Work will begin in late July and be completed by summer 2025.



For questions about project construction, call 949-724-6676 or email GreatPark@cityofirvine.org.

For more information about development at the Great Park, visit greatparkframework.org.