



# PUBLIC WORKS & SUSTAINABILITY

## MONTHLY CONSTRUCTION

### PROJECTS IN THE CITY OF IRVINE

SEPTEMBER 2024

## CITY PROJECTS

### 1. ANNUAL STREET REHABILITATION AND SLURRY SEAL

The project includes asphalt pavement rehabilitation, slurry seal, and concrete infrastructure repairs for various streets within Planning Areas 14, 38, and 40, which include the communities of Westpark, Westpark II, and Cypress Village. Project is anticipated to be completed in fall 2024. Temporary lane closures may occur intermittently on major arterial streets between 9 a.m. and 3 p.m. and on residential streets between 8 a.m. and 4 p.m. weekdays. Advance notices and detour signs will be provided to alert motorists to the lane closures. Construction is inspected by Public Works & Sustainability staff. An alternate route is suggested.



### 2. JAMBOREE PAVEMENT REHABILITATION



The project includes asphalt pavement restoration, adjustment of valve covers, pull boxes, and manhole covers to match the grade, replacement of damaged concrete curb, gutter, curb ramps, and installation of new signage and striping.

Project is anticipated to be completed summer 2024. Lane closures and detours will occur along Jamboree Road for the duration of the project. Advance notices and detour signs will be provided to alert motorists to the lane closures. Construction is inspected by Public Works & Sustainability staff. An alternate route is suggested.

### 3. TRABUCO ROAD IMPROVEMENTS FROM JEFFREY ROAD TO SAND CANYON AVENUE

The project includes cold milling, roadway excavation, removal and replacement of asphalt pavement, concrete curb, gutter, curb ramps and sidewalk, utility protection, pavement delineation and signage, traffic signal modification, adjustment of Irvine Ranch Water District (IRWD) and other utility facilities, and adjusting valve covers and manhole covers to grade. Project is anticipated to be completed fall 2024. Lane closures are expected for the duration of the project. Construction is inspected by Public Works & Sustainability staff. An alternate route is suggested.



## CITY PROJECTS (CONTINUED)

### 4. RTSSP FOR BARRANCA PARKWAY/ DYER ROAD/MUIRLANDS BOULEVARD/ SEGERSTROM AVENUE/SLATER AVENUE

The project includes upgrades to the traffic signal system in the cities of Irvine, Santa Ana, and Fountain Valley. The traffic signal system upgrades include video detection systems, CCTV systems, LED countdown pedestrian signal phase modules, traffic signal controllers, controller cabinets, and other items, as mentioned in the project specifications. Project is anticipated to be completed summer 2024. Temporary lane closures may occur intermittently between 9 a.m. and 3 p.m. weekdays. Construction is inspected by Public Works & Sustainability staff. An alternate route is suggested.



### 5. SWEET SHADE UNIVERSAL PLAYGROUND

The City is improving Sweet Shade Neighborhood Park to create a universal playground. An existing playground in the park will be rehabilitated to become an inclusive playground for the region around Irvine. The new inclusive park will include new structures featuring sensory activities, wheelchair accessibility, adaptive and expressive swings with harnesses, an inclusive sports court for people of all ages and abilities, and a restroom facility with adult changing stations. The project is anticipated to be completed winter 2024. Construction is inspected by Public Works & Sustainability staff.



### 6. JEFFREY OPEN SPACE TRAIL/I-5 BICYCLE AND PEDESTRIAN BRIDGE



The project includes construction of a Class I bicycle and pedestrian connection along the Jeffrey Open Space Trail (JOST). Project is anticipated to be completed summer 2026. Temporary lane closures may occur intermittently

between 9 a.m. and 3 p.m. on City streets and along I-5. Pedestrian and bicyclist access will be maintained during construction. Advance notices and detour signs will be provided to alert motorists to the lane closures. Construction is inspected by Public Works & Sustainability staff.

### 7. LEFT TURN ELONGATION IMPROVEMENTS

The project will extend four existing left-turn lanes to increase turning capacity and minimize spillover into the adjacent through lanes. The four locations are: northbound Jeffrey Road at Roosevelt, southbound Culver Drive at Barranca Parkway, eastbound Warner Avenue at Culver Drive, and westbound Warner Avenue at Culver Drive. Project is anticipated to be completed in summer 2024. Construction is inspected by Public Works & Sustainability.



## CITY PROJECTS (CONTINUED)

### 8. NORTHWOOD AQUATICS CENTER DECK REPLACEMENT

The Northwood Aquatics Center Deck Replacement will replace the pool deck at Northwood Aquatics Center and upgrade pool accessories, re-plaster the pool surface, install new pool tiles, and improve ADA accessibility at the pool and parking lot.

The project is anticipated to be completed winter 2024. Construction is inspected by Public Works & Sustainability staff in coordination with IUSD and DSA.

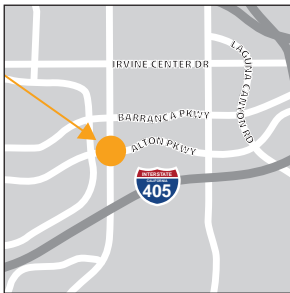


to the secured parking area, a new trash enclosure, re-grading, drainage enhancements, entrance modifications, new activity yards, and landscaping. The project is anticipated to be completed summer 2026.



### 9. JEFFREY/ALTON INTERSECTION IMPROVEMENT

The project includes cold milling, roadway excavation and paving, concrete curb, gutter, curb ramps, driveways, and sidewalk; water quality structures; retaining wall; utility protection relocation; signing and striping; traffic signal modification; landscape and irrigation construction, and adjustments of IRWD and other utility facilities. Project is anticipated to be completed winter 2024.



Temporary lane closures may occur intermittently between 9 a.m. and 3 p.m. weekdays. Construction is inspected by Public Works & Sustainability staff. An alternate route is suggested.

### 10. IRVINE ANIMAL CARE CENTER RENOVATIONS

The project expands and renovates the Irvine Animal Care Center and its site features. Improvements include additions to the administration building, a new clinic building, and in-fill administration addition. Renovations will be made to the existing administration building, cats/small animals housing, and kennels. Site improvements include modifications

### 11. CIVIC CENTER CLOCK TOWER REHABILITATION

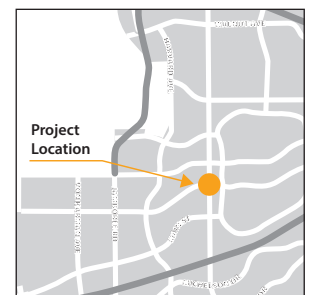


The Civic Center Clock Tower Rehabilitation project will remove the deteriorated exterior paint of the existing clock tower at the Irvine Civic Center and restore the over 100-foot-tall steel structure to its original hues. Work includes all necessary preparatory work and safety

measures. The project is anticipated to be completed fall 2024.

### 12. CULVER/ALTON INTERSECTION IMPROVEMENTS

This project includes cold milling, roadway excavation and paving, concrete curb, gutter, curb ramps, driveways, and sidewalk; water quality structures; retaining wall; utility protection relocation; signing and striping; traffic signal modification; landscape and irrigation construction, and adjustments of IRWD and other utility facilities. Project is anticipated to be completed summer 2025.



Temporary lane closures may occur intermittently between 9 a.m. and 3 p.m. weekdays. Construction is inspected by Public Works & Sustainability staff. An alternate route is suggested.



## DEVELOPER PROJECTS

### 13. MARINE WAY FROM ALTON PARKWAY TO BAKE PARKWAY

FivePoint Communities continues to work on Marine Way from Alton Parkway to Bake Parkway. A completion schedule has not been provided. Construction is inspected by Public Works & Sustainability staff.



### 14. JAMBOREE ROAD FROM FAIRCHILD ROAD TO CAMPUS DRIVE

University of California, Irvine is constructing a new medical complex along the easterly side of Jamboree Road between Fairchild Road and Campus Drive. The project consists of roadway widening, new underground utility infrastructures, and traffic signal improvements. Project is scheduled to be completed fall 2025. Intermittent lane closures may occur along the northbound side of Jamboree from Fairchild Road to Campus Drive between 9 a.m. and 3 p.m. Access will



be maintained for through traffic. Construction is inspected by Community Development and Public Works & Sustainability staff. An alternate route is suggested.

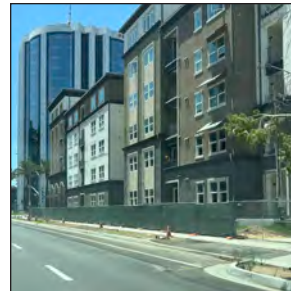
### 15. JEFFREY ROAD — PORTOLA PARKWAY TO 3,500 FEET NORTH OF PORTOLA PARKWAY

Irvine Company is extending Jeffrey Road from Portola Parkway to 3,500 feet north of Portola Parkway. The project consists of installation of underground utility infrastructure, construction of a pedestrian undercrossing,



and roadway improvements. Project is anticipated to be completed fall 2024. Public access to Jeffrey Road, north of Portola Parkway is currently unavailable. Advance notices will be provided to alert motorists to the lane closures. Construction is inspected by Public Works & Sustainability staff. An alternate route is suggested.

### 16. VON KARMAN AVENUE FROM DUPONT DRIVE TO MARTIN, AND MARTIN FROM VON KARMAN AVENUE TO 600 FEET WEST OF VON KARMAN AVENUE



Kantarra West LLC has resumed construction at 18831 Von Karman Avenue. The public sidewalk on Von Karman Avenue from Dupont Drive to Martin, and Martin from Von Karman Avenue to 600 feet west of Von Karman Avenue has been completed. Staff is coordinating with the

Kantarra West LLC to complete the remaining public improvements.

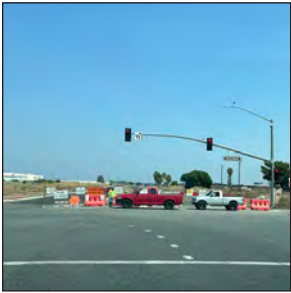
### 17. MAIN STREET — GILLETTE AVENUE TO MERCANTILE

Intracorp is improving Main Street from Gillette Avenue to Mercantile. The project consists of roadway improvements and traffic signal modifications. Project is anticipated to be completed fall 2024. Intermittent lane closures may occur between 9 a.m. and 3 p.m. on weekdays. Access will be maintained for through traffic. The sidewalk along the project frontage may be closed intermittently for the safety of the general public. Advance notices will be provided to alert motorists to the lane closures. Construction is inspected by Community Development and Public Works & Sustainability staff. An alternate route is suggested.



## DEVELOPER PROJECTS (CONTINUED)

### 18. MARINE WAY FROM SKYHAWK TO 2,700 FEET EAST OF SKYHAWK



FivePoint Communities has started construction on Marine Way from Skyhawk to 2,700 feet east of Skyhawk. Demolition, rough grading, and underground utility construction are completed, and street improvements are in progress. A completion

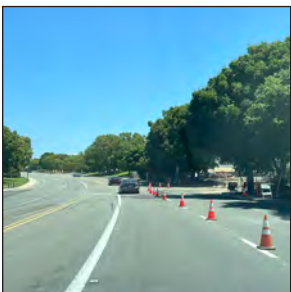
schedule has not been provided. Construction is inspected by Public Works & Sustainability staff.

### 19. BAKE PARKWAY — I-5 TO ROCKFIELD BOULEVARD

FivePoint Communities has started construction on Bake Parkway from I-5 to Rockfield Boulevard. The project consists of roadway widening, new underground utility infrastructures, and construction of Bake Parkway and Marine Way intersection. A completion schedule has not been provided. Construction is inspected by Public Works & Sustainability staff.



### 20. MUIRLANDS BOULEVARD AND STERLING INTERSECTION

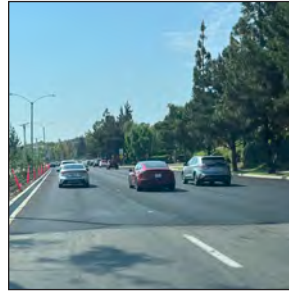


FivePoint Communities has started construction on Muirlands Boulevard and Sterling intersection. The project consists of roadway widening, new underground utility infrastructures, and traffic signal improvements. A completion schedule has not

been provided. Construction is inspected by Public Works & Sustainability staff.

### 21. PORTOLA PARKWAY — STATE ROUTE 261 TO JAMBOREE ROAD

Irvine Company is improving Portola Parkway from State Route 261 to Jamboree Road. The project consists of median modifications and adding two westbound right turn lanes on



Portola Parkway to Jamboree Road. Project is anticipated to be completed fall 2024. Intermittent lane closures may occur between 9 a.m. and 3 p.m. on weekdays. Access will be maintained for through traffic. Advance notices will be provided to

alert motorists to the lane closures. Construction is inspected by Public Works & Sustainability staff. An alternate route is suggested.

### 22. BRYAN AVENUE — MARKET PLACE TO STATE ROUTE 261 AND EL CAMINO REAL — JAMBOREE ROAD TO STATE ROUTE 261

Irvine Company is improving Bryan Avenue from Market Place to State Route 261 and El Camino Real from Jamboree Road to State Route 261. The project consists of median modifications, intersection improvements, sidewalk



modifications, upgrading underground utilities, and traffic signal improvements. The project is anticipated to be completed fall 2024. Intermittent lane closures may occur between 9 a.m. and 3 p.m. on weekdays. Access will be maintained for through traffic. Advance notices will be provided to alert motorists to the lane closures. Construction is inspected by Community Development and Public Works & Sustainability staff. An alternate route is suggested.

## DEVELOPER PROJECTS (CONTINUED)

### 23. VON KARMAN AVENUE — MCGAW AVENUE TO BNSF RAILROAD

9th Street Partners LLC is improving Von Karman Avenue from McGaw Avenue to BNSF Railroad. The project consists of median modifications, sidewalk improvements, and upgrading underground utilities. Project is anticipated to be completed summer 2024. Intermittent lane closures may occur between 9 a.m. and 3 p.m. on weekdays. Access will be maintained for through traffic. Advance notices will be provided to alert motorists



to the lane closures. Construction is inspected by Community Development staff. An alternate route is suggested.

### 24. GREAT PARK BOULEVARD — BOSQUE TO RIDGE VALLEY, BEACON — GREAT PARK BOULEVARD TO CARMINE, AND CARMINE

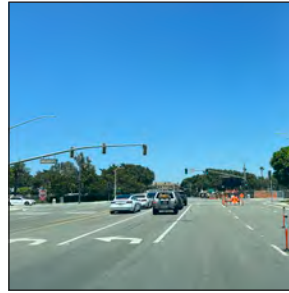
FivePoint Communities is improving Great Park Boulevard from Bosque to Ridge Valley, Beacon from Great Park Boulevard to Carmine, and Carmine. The project consists of intersection improvements, sidewalk improvements, and upgrading underground utilities. Project is anticipated to be completed summer 2024. Intermittent lane closures may occur between 9 a.m. and 3 p.m. on weekdays. Access will be maintained



for through traffic. Advance notices will be provided to alert motorists to the lane closures and parking restrictions. Construction is inspected by Community Development staff. An alternate route is suggested.

### 25. BARRANCA PARKWAY, PACIFICA, AND GATEWAY

Irvine Company is installing underground utilities and street improvements to serve a five-story apartment building located at Gateway/Pacifica and Pacifica/Barranca Parkway. Construction is scheduled to be completed spring 2025. Temporary lane closures and restrictions are in place between 9 a.m. to 3 p.m. on weekdays and Saturdays. Access will be maintained for through traffic. Advance

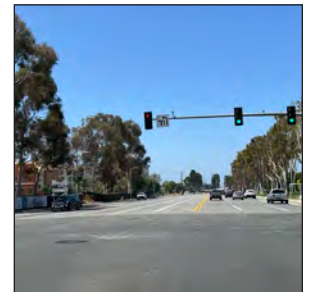


notices will be provided to alert motorists to the lane closures. Construction is inspected by Community Development staff. An alternate route is suggested.

### 26. RED HILL AVENUE, MCGAW AVENUE, AND GILLETTE AVENUE

IBC Red Hill Owner LLC is improving underground water and sewer infrastructures for 17320 Red Hill Avenue at Red Hill Avenue, McGaw Avenue, and

Gillette Avenue. Construction is scheduled to be completed in fall 2024. Temporary lane closures and restrictions are in place between 9 a.m. to 3 p.m. on weekdays. Access will be maintained for through traffic. Advance notices will be provided to alert motorists



to the lane closures. Construction is inspected by Public Works & Sustainability staff. An alternate route is suggested.



## UTILITY PROJECTS

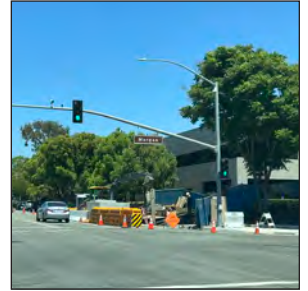
### 27. PORTOLA PARKWAY AND SAND CANYON AVENUE INTERSECTION

IRWD is improving the Portola Parkway and Sand Canyon Avenue intersection as part of the Syphon Reservoir Project. The project consists of modifying existing median curb, striping, and traffic signal improvements at Portola Parkway and Sand Canyon Avenue intersection. Project is anticipated to be completed winter 2024. Intermittent lane closures may occur between 9 a.m. and 3 p.m. on weekdays. Access will be maintained for through traffic. Advance notices will be provided to alert motorists to the lane closures. Construction is inspected by IRWD and Community Development staff. An alternate route is suggested.



### 29. ALTON PARKWAY AND MORGAN INTERSECTION

Southern California Edison is replacing an underground vault on Alton Parkway, east of Morgan. Work is anticipated to be completed summer 2024. Intermittent lane closures may occur between 9 a.m. and 3 p.m. on weekdays. Temporary K-rail may be installed to protect motorists and construction workers. Access will be maintained for through traffic. Advance notices will be provided to alert motorists to the lane closures. Construction is inspected by Public Works & Sustainability staff. An alternate route is suggested.



### 28. HARVARD AVENUE AND WARNER AVENUE INTERSECTION

Southern California Gas Company is improving the existing gas pressure regulator station on Harvard Avenue, south of Warner Avenue. Project is anticipated to be completed fall 2024. Intermittent lane closures on southbound Harvard Avenue may occur between 9 a.m. and 3 p.m. on weekdays. Access will be maintained for through traffic. Advance notices will be provided to alert motorists to the closures. Construction is inspected by Public Works & Sustainability staff. An alternate route is suggested.



## OTHER AGENCIES

### 30. STATE ROUTE 55 — I-405 TO I-5

Orange County Transportation Authority (OCTA), in cooperation with Caltrans, is improving SR-55 between I-405 and I-5. The project will add one regular lane



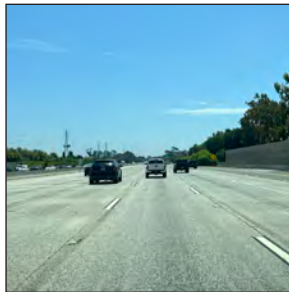
and one carpool lane in each direction of SR-55 between I-405 and I-5, improving mobility for commuters within Orange County. Project is anticipated to be completed fall 2026. Intermittent on-ramp/off-ramp closures along SR-55 may occur. OCTA and

Caltrans will provide advance notices to alert motorists and local businesses to the closures. Construction is inspected by Caltrans and City staff will monitor local traffic. An alternate route is suggested.

### 31. I-5 AND STATE ROUTE 133

Caltrans is improving I-5 and SR-133 at various locations. The project will rehabilitate bridges, replace wingwalls, and

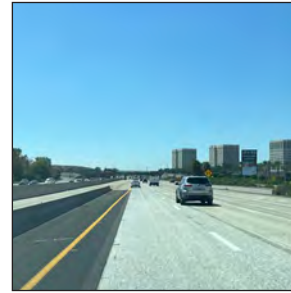
include associate drainage improvements. Project is anticipated to be completed spring 2025. Weeknight lane closures may occur between 9:30 p.m. and 5:30 a.m. Access will be maintained for through traffic. Advance notices will be provided to alert motorists



to the closures. Construction is inspected by Caltrans and Community Development staff will monitor local traffic. An alternate route is suggested.

### 32. STATE ROUTES 55 AND 133, AND I-5 AND I-405

Caltrans is improving SR-55 and SR-133, and I-5 and I-405 at multiple locations. The project will replace



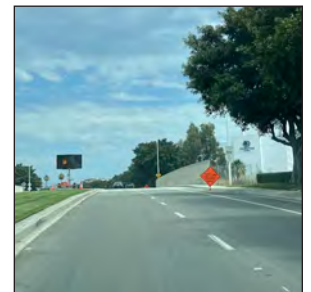
AC pavement and concrete slabs within Caltrans right-of-way. Project is anticipated to be completed fall 2024. Weeknight lane closures may occur between 8 p.m. and 6 a.m. Advance notices will be provided to alert motorists to the lane closures.

Construction is inspected by Caltrans and City staff will monitor local traffic. An alternate route is suggested.

### 33. STATE ROUTE 133 — IRVINE CENTER DRIVE TO I-405

Caltrans is improving the southbound lanes on SR-133 from Irvine Center Drive to I-405. The project will construct new drainage facilities, guard rails, and

auxiliary lane within Caltrans right-of-way. Project is anticipated to be completed summer 2026. Weeknight lane closures may occur between 10 p.m. and 5 a.m. San Diego Creek trail will be closed between Pacifica and Alton Parkway. Advance notices will be provided to alert motorists

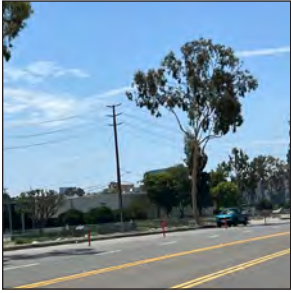


to the lane closures, and trail detour signs will be posted. Construction is inspected by Caltrans and City staff will monitor local traffic. An alternate route is suggested.



## OTHER AGENCIES (CONTINUED)

### 34. LANE CHANNEL – MAIN STREET TO SKY PARK EAST



Orange County Public Works is improving Lane Channel between Main Street to Sky Park East. Work is anticipated to be completed fall 2024. Intermittent lane closures may occur between 9 a.m. and 3 p.m. on weekdays.

Temporary K-rail may be installed to protect motorists and construction workers. Access will be maintained for through traffic. Advance notices will be provided to alert motorists to the lane closures. Construction is inspected by Orange County Public Works, and City staff will monitor local traffic. An alternate route is suggested.

### 35. SAN DIEGO CREEK – CAMPUS DRIVE TO MACARTHUR BOULEVARD



Orange County Public Works is improving San Diego Creek from Campus Drive to MacArthur Boulevard. Work is anticipated to be completed fall 2024. San Diego Creek bike trail and the number three southbound lane on University Drive may be

closed intermittently between 9 a.m. and 3 p.m. on weekdays. Advance notices will be provided to alert motorists of the lane closures, and trail detour signs will be posted. Construction is inspected by Orange County Public Works, and City staff will monitor local traffic. An alternate route is suggested.

## COMPLETED PROJECTS

**Portola Parkway — Jeffrey Road and Orchard Hills Drive:** Irvine Company has completed improving Portola Parkway from Jeffrey Road to Orchard Hills Drive.

**Walnut Trail — Peters Canyon Trail to Harvard Avenue:** Southern California Gas Company has completed replacing their gas lines in Walnut Trail between Peters Canyon Trail to Harvard, in the City of Tustin.

City of Irvine, Public Works & Sustainability Department

1 Civic Center Plaza, Irvine, CA 92606

For questions or additional information: 949-724-5546



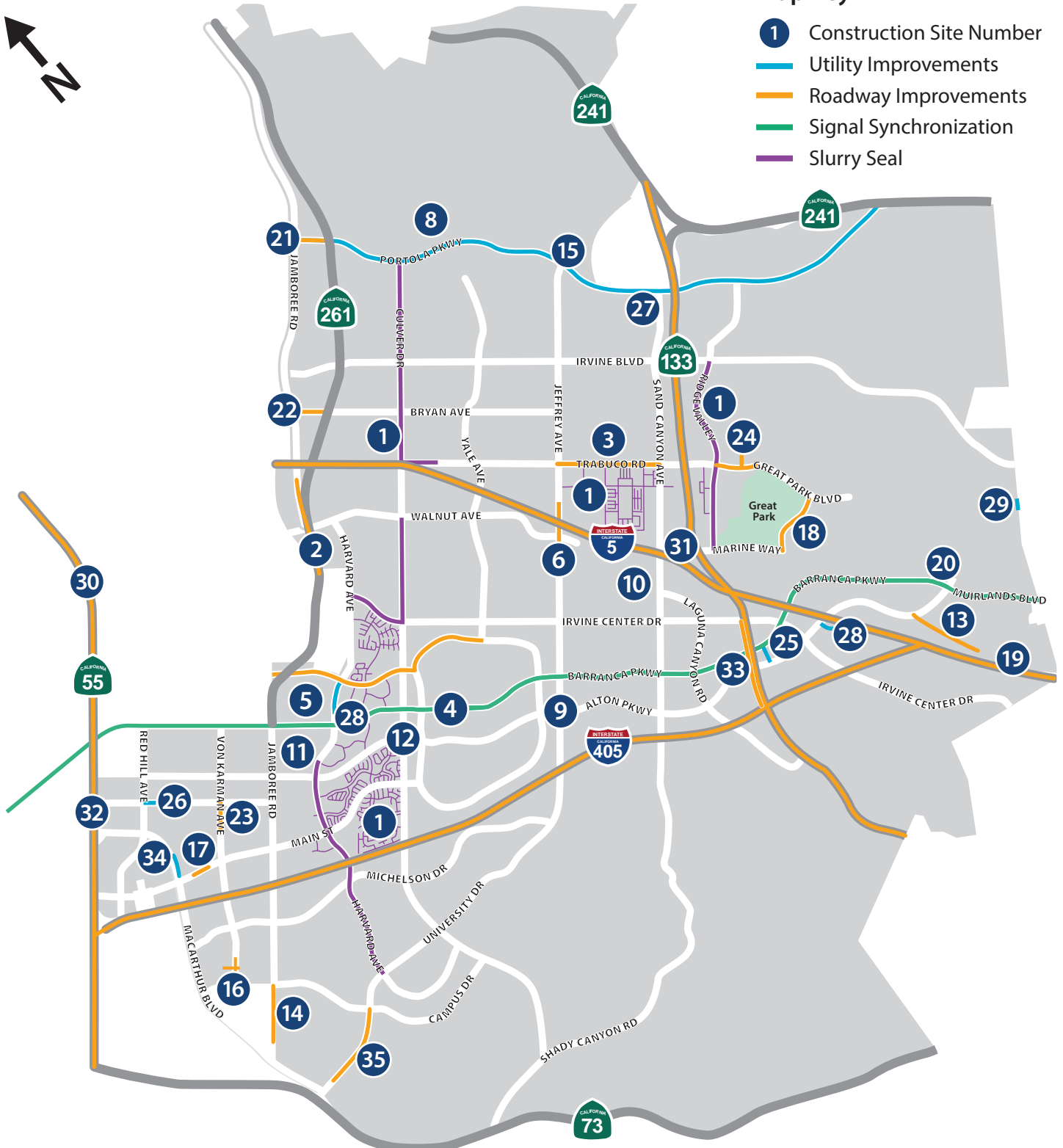
# PUBLIC WORKS & SUSTAINABILITY CONSTRUCTION MAP

SEPTEMBER 2024



### Map Key

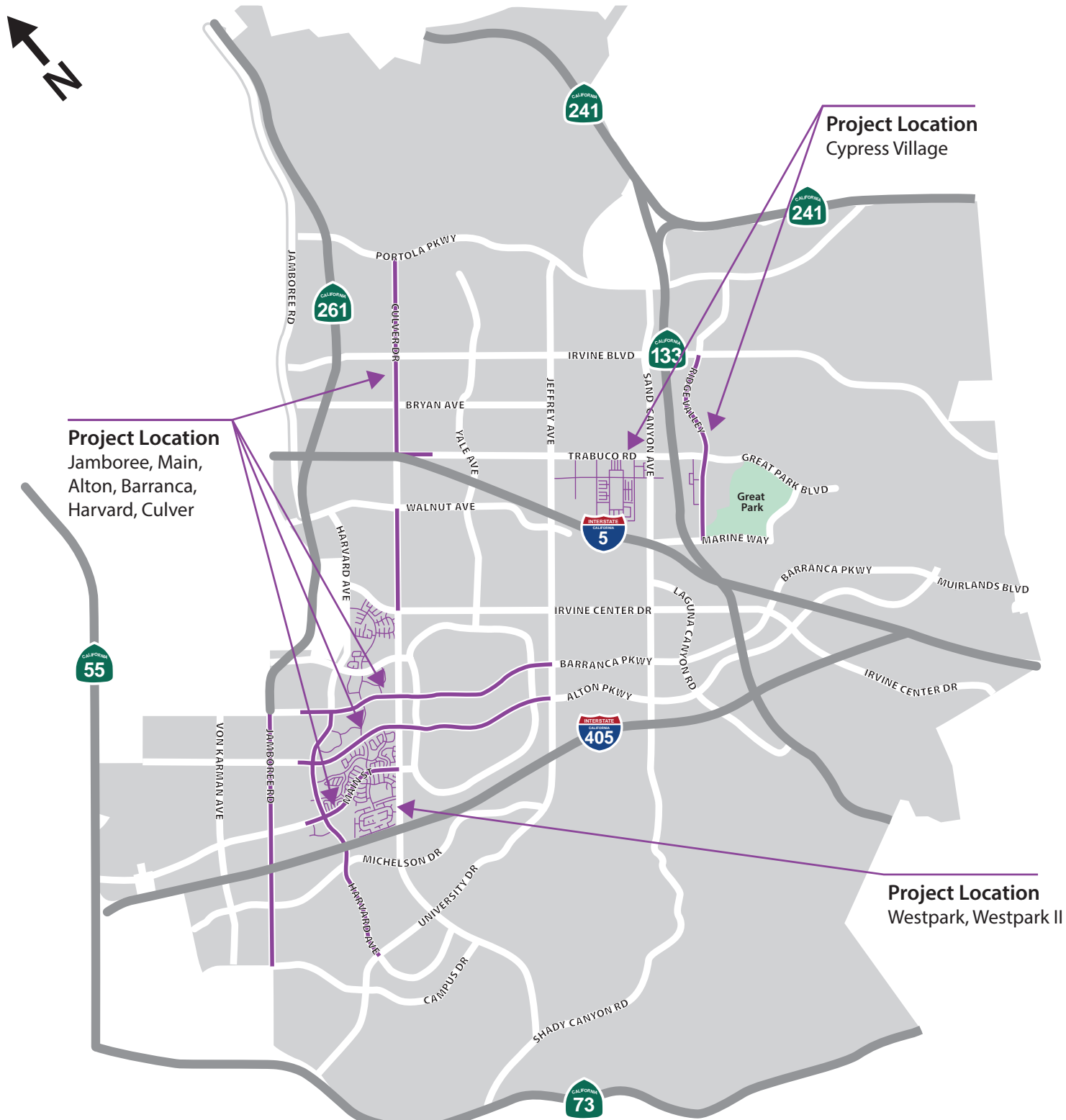
- 1 Construction Site Number
- Utility Improvements
- Roadway Improvements
- Signal Synchronization
- Slurry Seal





# ANNUAL STREET REHABILITATION AND STREET SLURRY PROJECT

FY 2022-23







# JAMBOREE PAVEMENT REHABILITATION



Project  
Location



# TRABUCO ROAD IMPROVEMENTS

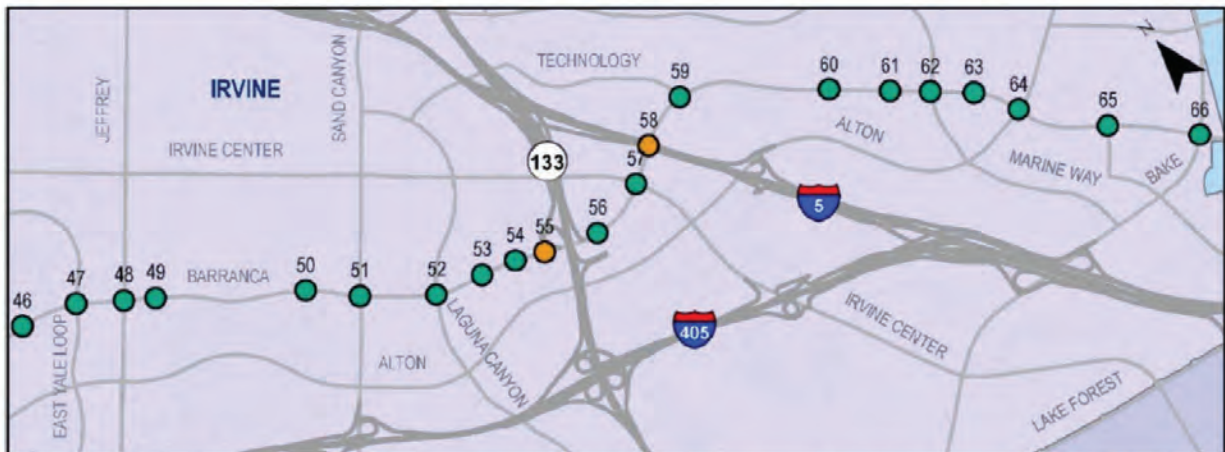
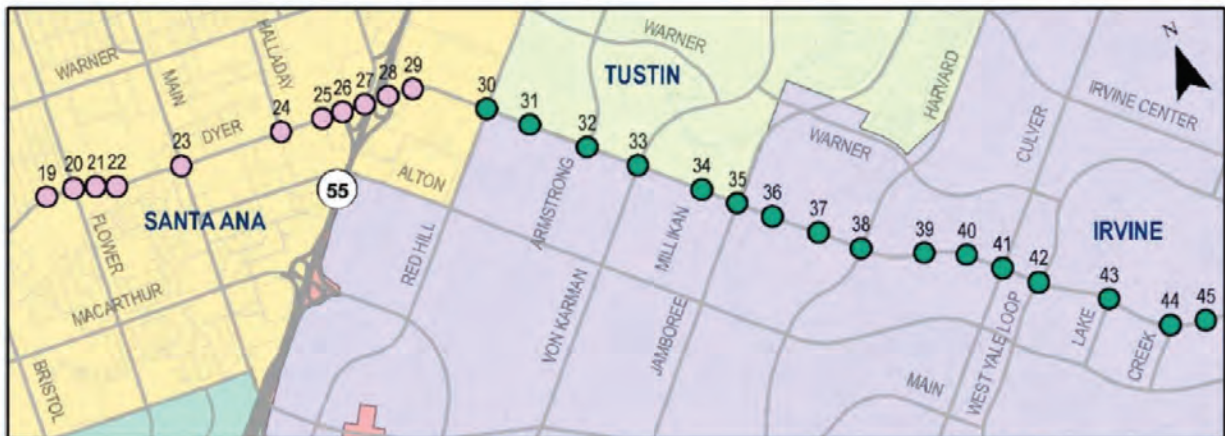
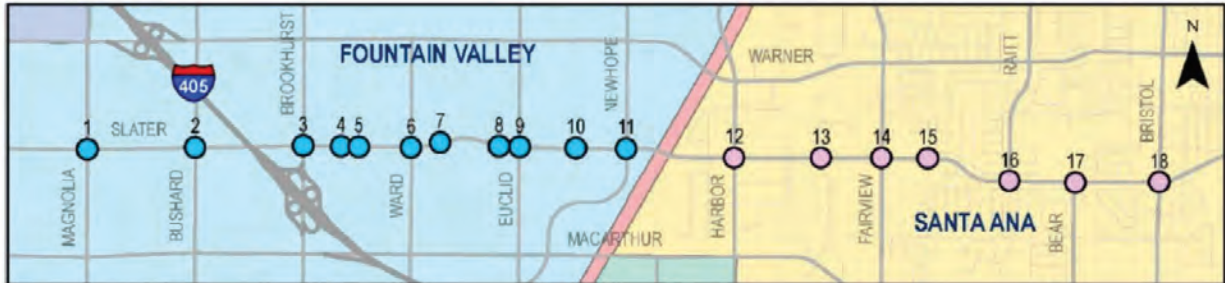
FROM JEFFREY ROAD TO SAND CANYON AVENUE





# REGIONAL TRAFFIC SIGNAL SYNCHRONIZATION PROGRAM

BARRANCA PKWY/MUIRLANDS BLVD/DRYER RD/  
SEGERSTROM AVE/SLATER AVE



## LEGEND

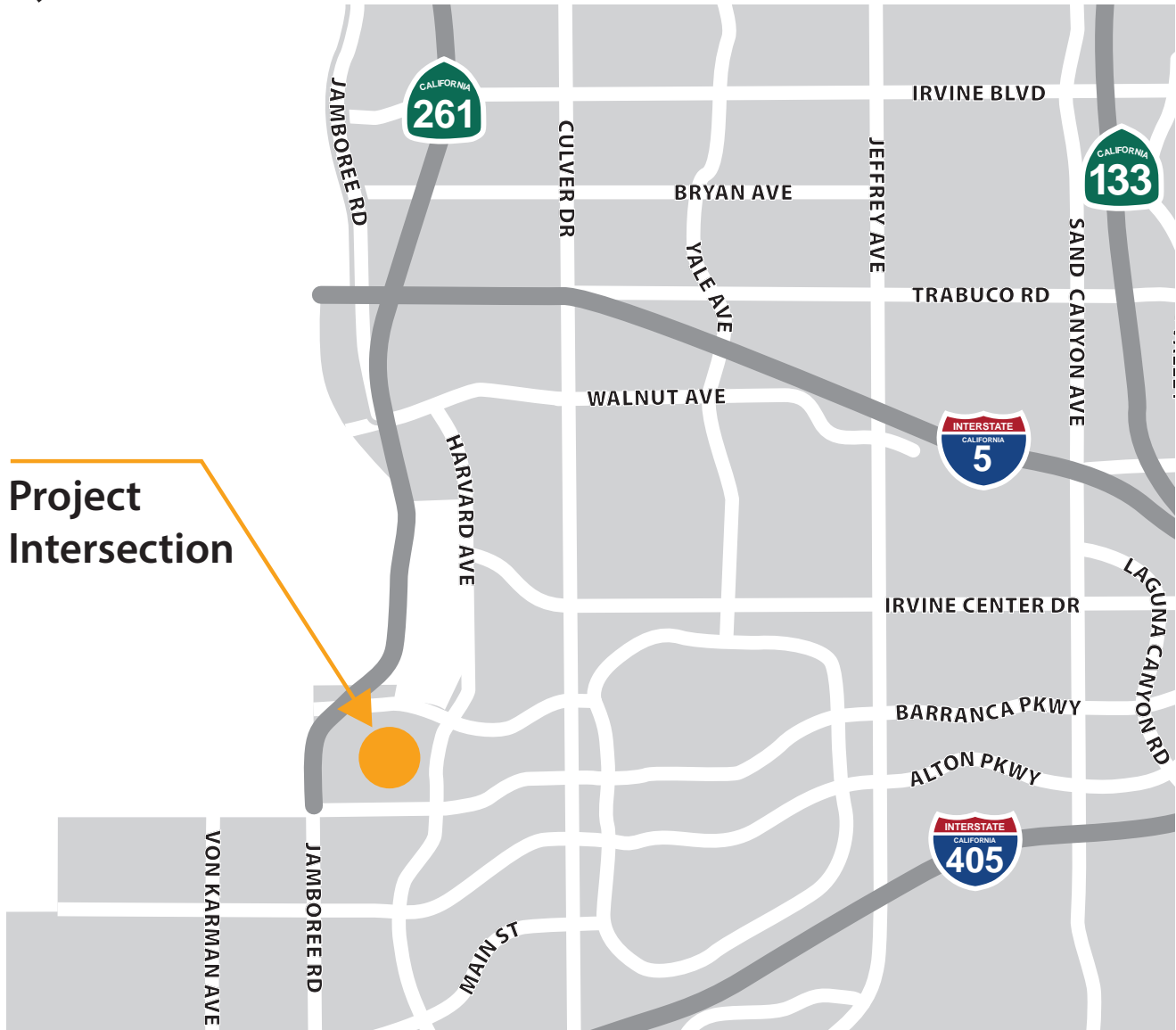
### Owned and Maintained

- City of Fountain Valley
- City of Santa Ana
- City of Irvine
- Caltrans



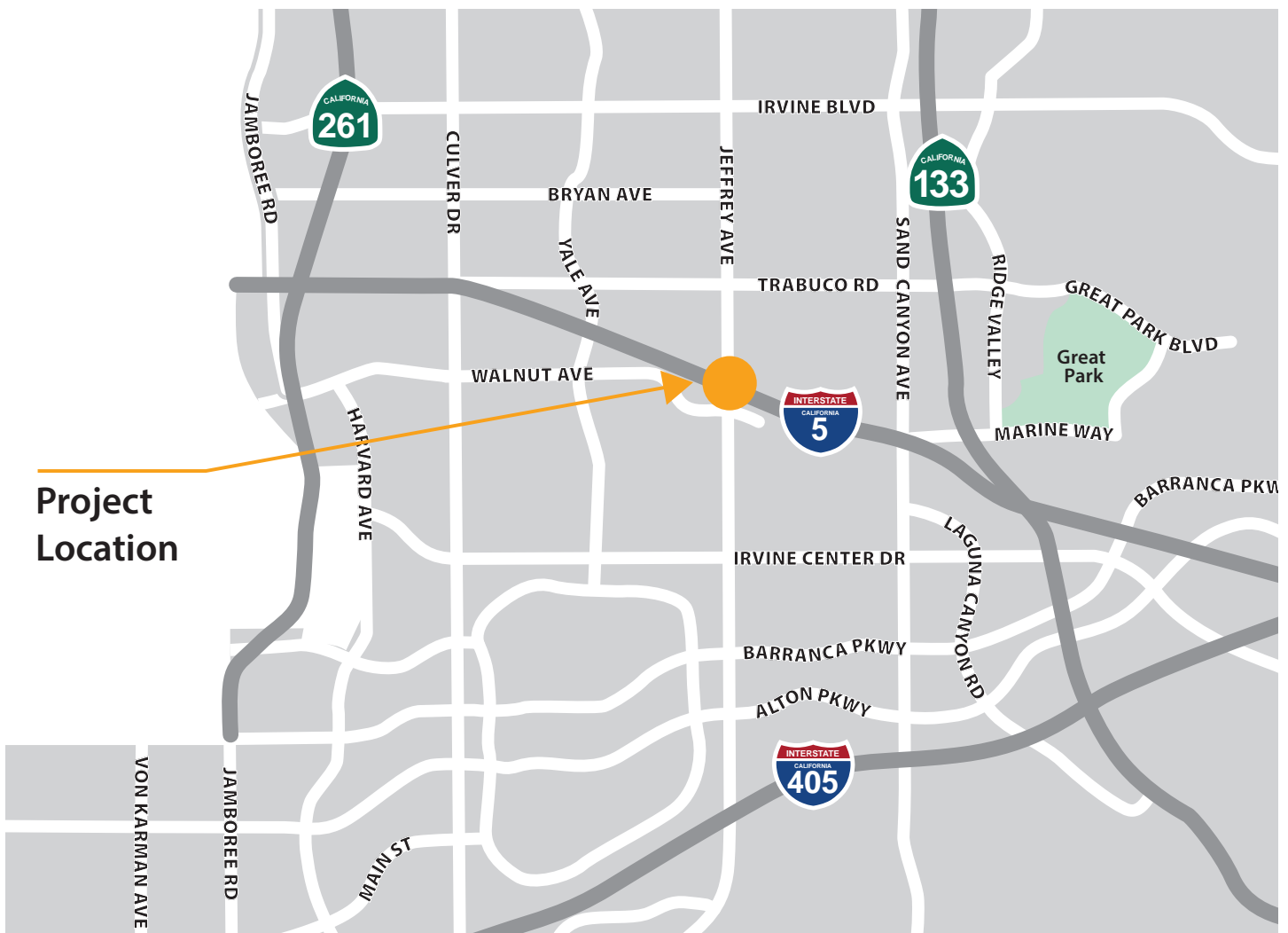


# SWEET SHADE UNIVERSAL PLAYGROUND





# JEFFREY OPEN SPACE TRAIL (JOST)/ I-5 BICYCLE AND PEDESTRIAN BRIDGE PROJECT



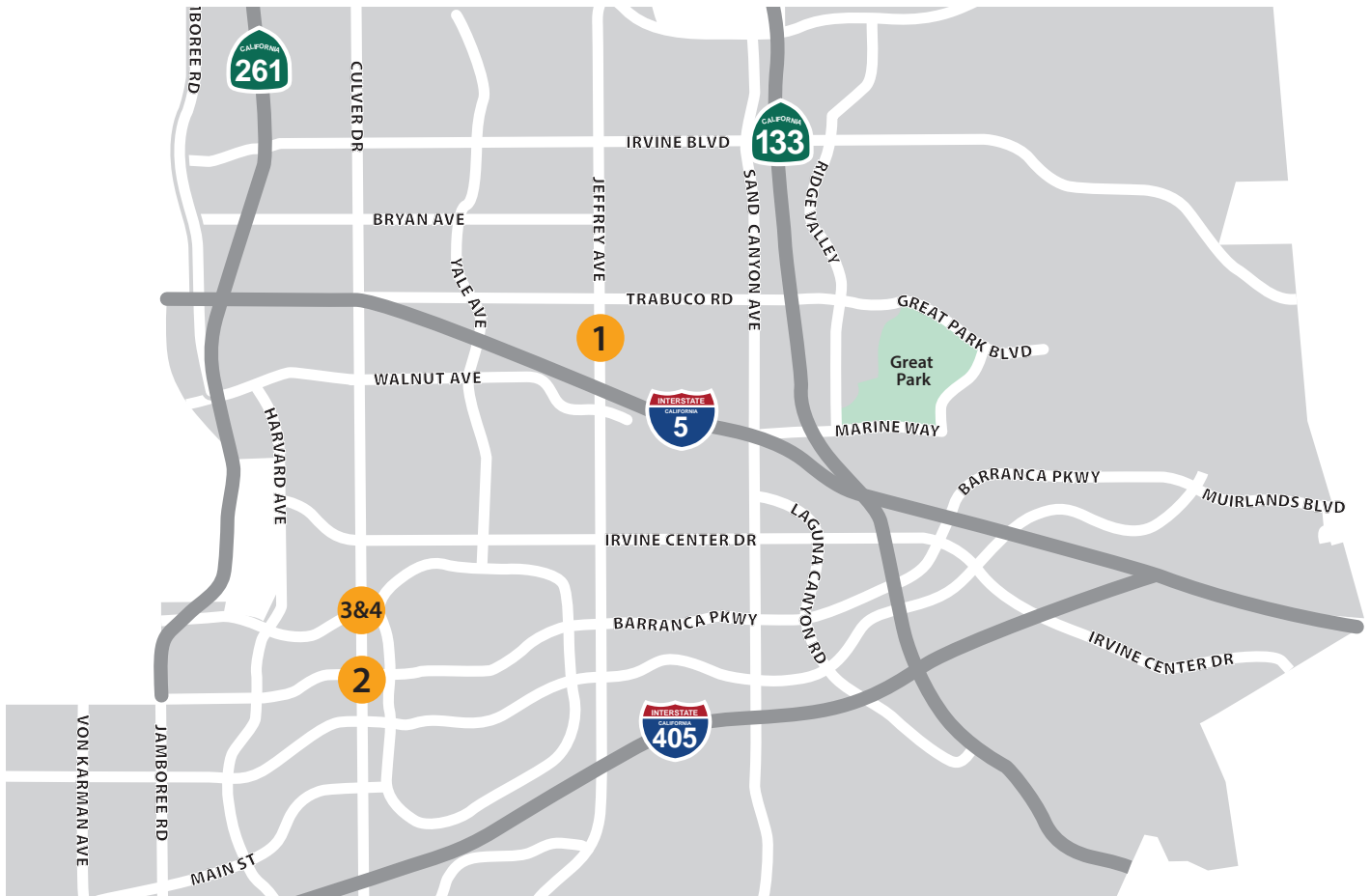


# LEFT-TURN LANE ELONGATION IMPROVEMENTS



## Project Locations

1. Jeffrey/Roosevelt – N/B Jeffrey Left
2. Culver/Barranca – S/B Culver Left
3. Culver/Warner – E/B Warner Left
4. Culver/Warner – W/B Warner Left







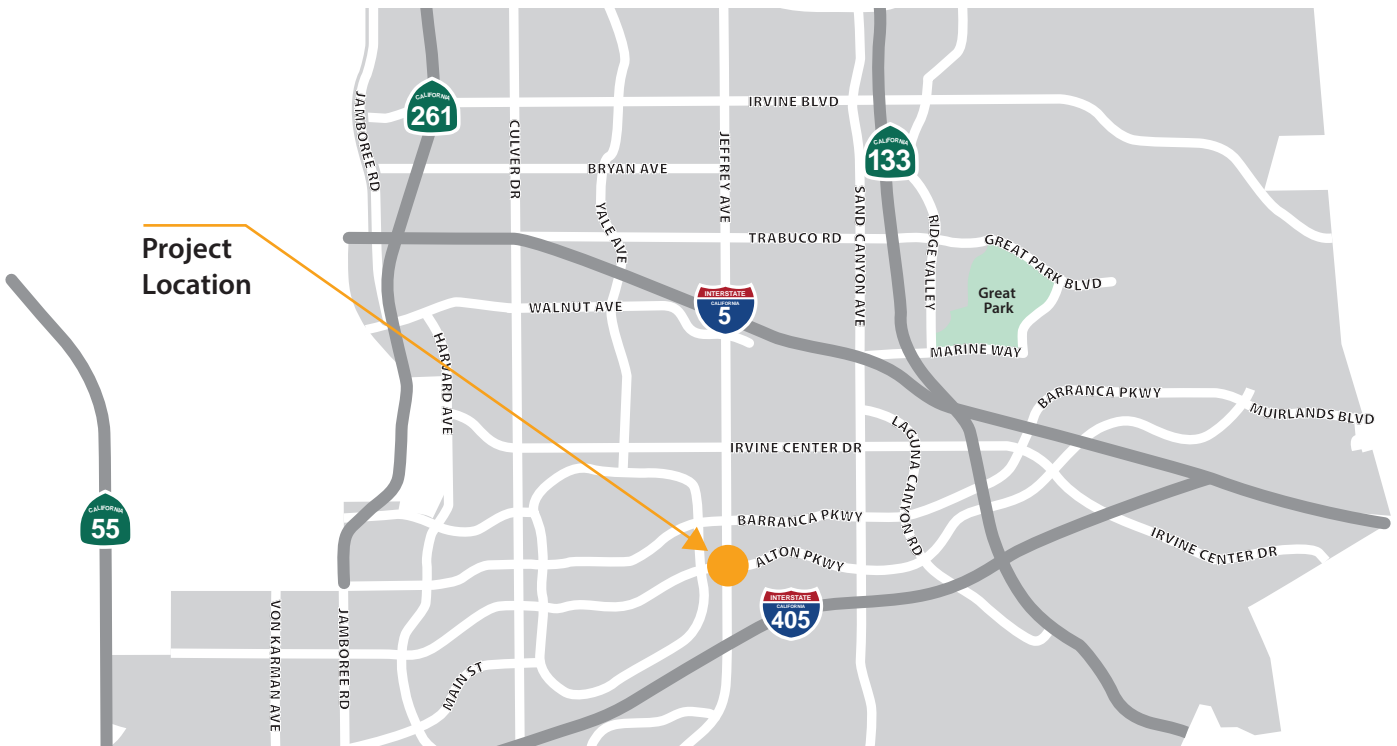
# NORTHWOOD AQUATICS CENTER DECK REPLACEMENT



Project  
Location

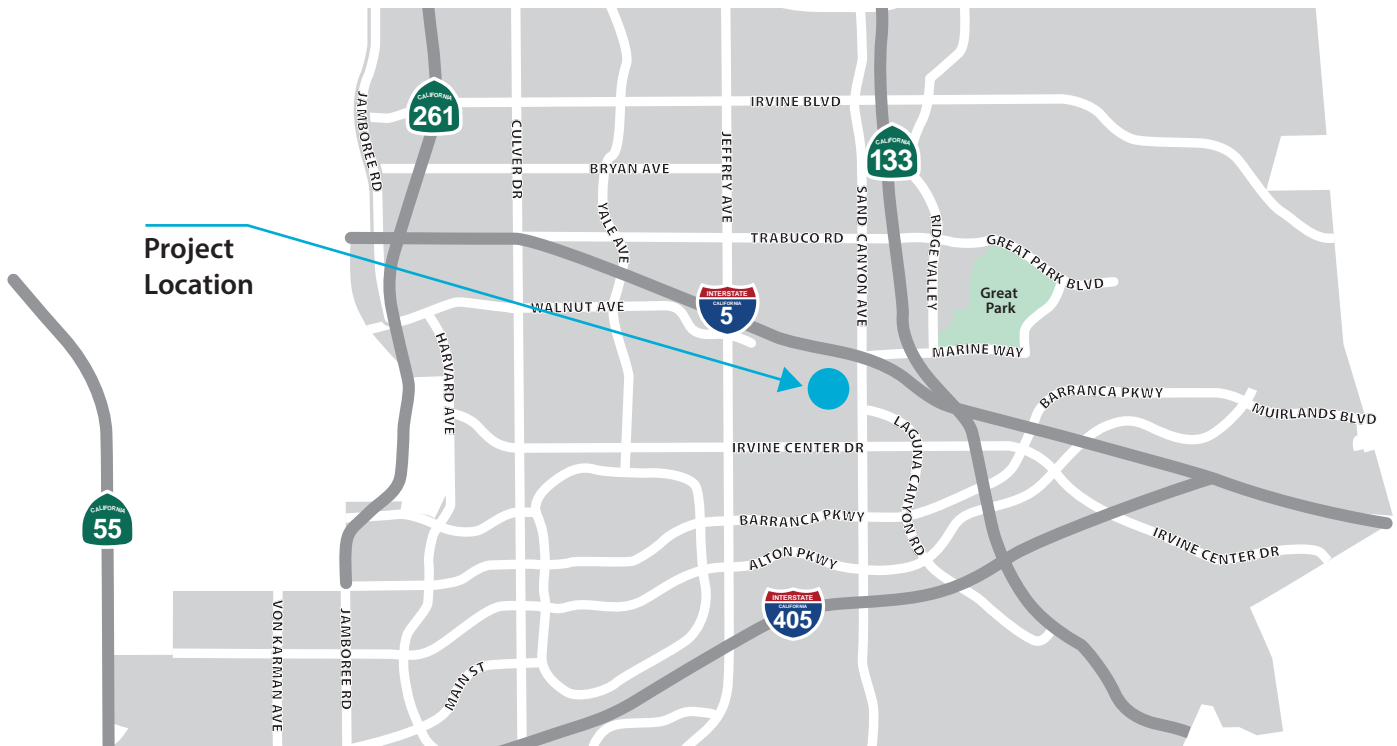


# JEFFREY/ALTON INTERSECTION IMPROVEMENTS





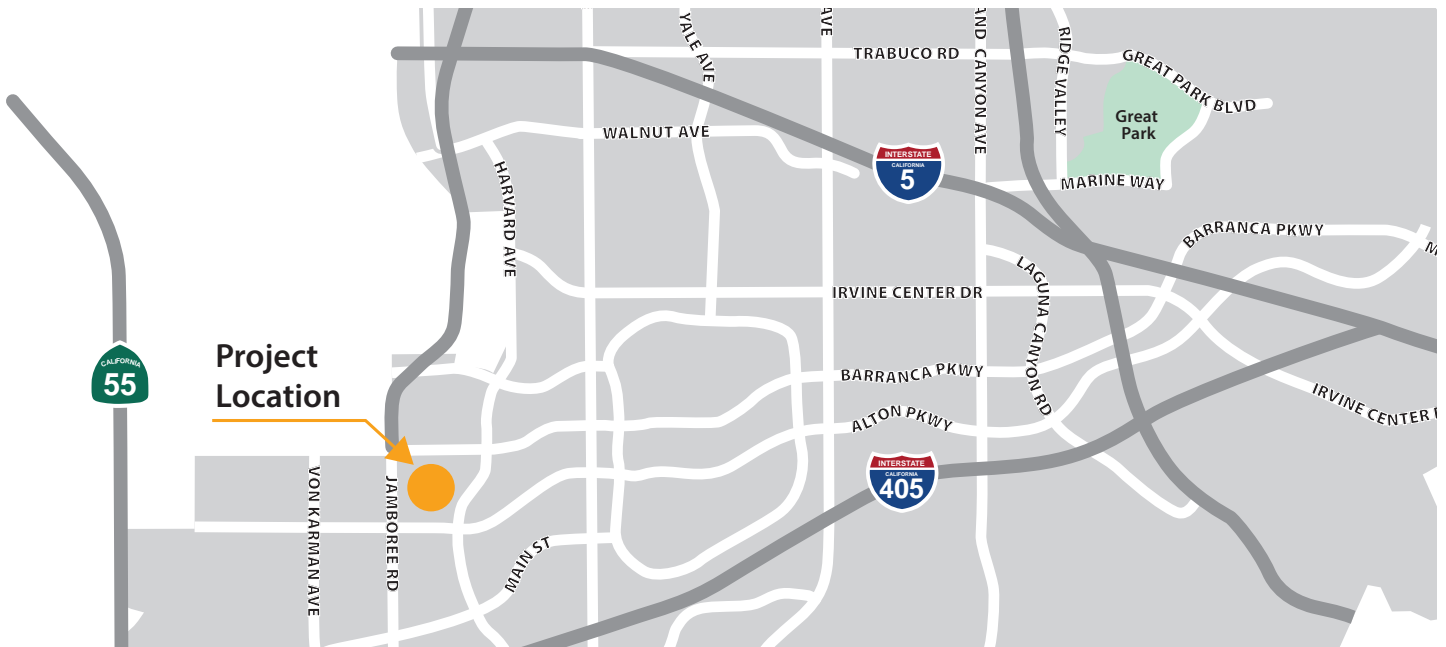
# IRVINE ANIMAL CARE CENTER EXPANSION AND RENOVATION PROJECT







# CIVIC CENTER CLOCK TOWER REHABILITATION





# CULVER/ALTON INTERSECTION IMPROVEMENTS

