



# PUBLIC WORKS & SUSTAINABILITY

## MONTHLY CONSTRUCTION

### PROJECTS IN THE CITY OF IRVINE

JANUARY 2025

## CITY PROJECTS

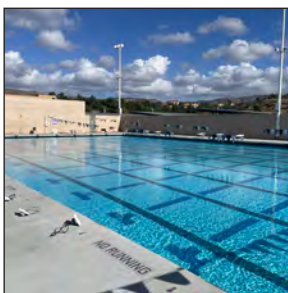
### 1. JEFFREY OPEN SPACE TRAIL/I-5 BICYCLE AND PEDESTRIAN BRIDGE



The project includes construction of a Class I bicycle and pedestrian connection along the Jeffrey Open Space Trail (JOST). Project is anticipated to be completed summer 2026. Temporary lane closures may occur intermittently

between 9 a.m. and 3 p.m. on City streets and along I-5. Pedestrian and bicyclist access will be maintained during construction. Advance notice and detour signs will be provided to alert motorists to the lane closures. Construction is inspected by Public Works & Sustainability staff.

### 2. NORTHWOOD AQUATICS CENTER DECK REPLACEMENT



The Northwood Aquatics Center Deck Replacement will replace the pool deck at Northwood Aquatics Center and upgrade pool accessories, re-plaster the pool surface, install new pool tiles, and improve ADA accessibility for the pool and parking lot.

The project is anticipated to be completed winter 2024/25. Construction is inspected by Public Works & Sustainability staff in coordination with Irvine Unified School District (IUSD) and the Division of the State Architect (DSA).

### 3. JEFFREY/ALTON INTERSECTION IMPROVEMENT

The project includes cold milling, roadway excavation and paving, concrete curb, gutter, curb ramps, driveways, and sidewalk; water quality structures; retaining wall; utility protection relocation; signing and striping; traffic signal modification; landscape and irrigation construction, and adjustments of IRWD and other utility facilities. The project is anticipated to be completed winter 2024. Temporary lane closures may occur intermittently between 9 a.m. and 3 p.m. weekdays. Construction is inspected by Public Works & Sustainability staff. An alternate route is suggested.



City of Irvine, Public Works & Sustainability Department  
1 Civic Center Plaza, Irvine, CA 92606  
For questions or additional information: 949-724-5546

## ATTACHMENT 1

## CITY PROJECTS (CONTINUED)

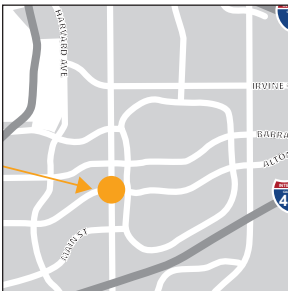
### 4. IRVINE ANIMAL CARE CENTER RENOVATIONS



The project expands and renovates the Irvine Animal Care Center and its site features. Improvements include additions to the administration building, a new clinic building, and an in-fill administration addition.

Renovations will be made to the existing administration building, cats/small animals housing, and kennels. Site improvements include modifications to the secured parking area, a new trash enclosure, re-grading, drainage enhancements, entrance modifications, new activity yards, and landscaping. The project is anticipated to be completed summer 2026.

### 5. CULVER/ALTON INTERSECTION IMPROVEMENTS



This project includes cold milling, roadway excavation and paving, concrete curb, gutter, curb ramps, driveways, and sidewalk; water quality structures; retaining wall; utility protection relocation; signing and striping; traffic signal modification; landscape

and irrigation construction, and adjustments of IRWD and other utility facilities. The project is anticipated to be completed summer 2025. Temporary lane closures may occur intermittently between 9 a.m. and 3 p.m. weekdays. Construction is inspected by Public Works & Sustainability staff. An alternate route is suggested.

### 6. IRVINE CENTER DRIVE PAVEMENT REHABILITATION (PACIFICA TO LAKE FOREST)

This project includes cold milling, roadway excavation and paving, concrete curb, gutter, ramps, driveway, and sidewalk; signing and striping; and adjustments of IRWD and other utility facilities. Project is anticipated

to be completed spring 2025. Temporary lane closures may occur intermittently between 9 a.m. and 3 p.m. Construction is inspected by Public Works & Sustainability staff. An alternate route is suggested.



### 7. ON CALL STREET REHABILITATION AND SLURRY SEAL — WOODBRIDGE NORTH NEIGHBORHOOD

This project includes cold milling, roadway excavation and paving, concrete curb, gutter, ramps, driveway, and sidewalk; signing and striping; and adjustments of IRWD and other utility facilities. Project is anticipated to be completed winter 2025. Temporary lane closures may occur intermittently between 9 a.m. and 3 p.m. Construction is inspected by Public Works & Sustainability staff. An alternate route is suggested.



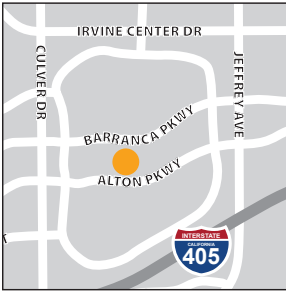
### 8. ARMSTRONG FIBER INSTALLATION

Angeles Construction and Belco are installing conduit, pull boxes, and fiber optic infrastructure along Armstrong Avenue and Alton Parkway to connect 17101 Armstrong Avenue to City Hall. The project is anticipated to be completed winter 2024. Temporary lane closures may occur intermittently between 9 a.m. and 3 p.m. Construction is inspected by Public Works & Sustainability staff.



## CITY PROJECTS (CONTINUED)

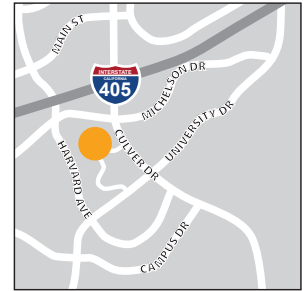
### 9. MIKE WARD COMMUNITY PARK PICKLEBALL COURTS



Environmental Construction Inc. is constructing eight new pickleball courts and four shade structures within the Mike Ward Community Park. The project also includes the addition of picnic tables, benches, drinking fountains, a new restroom

building, and site lighting improvements. The project is anticipated to be completed in January 2026. No lane closures will occur and staff will coordinate with Community Services staff to mitigate construction impacts. Construction is inspected by Public Works & Sustainability staff.

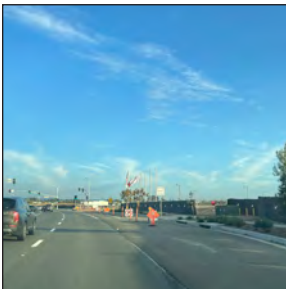
### 10. RANCHO SENIOR CENTER IMPROVEMENT PROJECT



This project includes replacement of interior partition and storefront walls with new wood stud walls, as well as concrete and striping accessibility improvements into the site. The project is located at 3 Ethel Coplen Way, Irvine and is anticipated to begin construction in winter 2025. Staff will coordinate with Community Services staff to limit impact to the site, and work will be inspected by Public Works & Sustainability staff.

## DEVELOPER PROJECTS

### 11. MARINE WAY FROM ALTON PARKWAY TO BAKE PARKWAY



FivePoint Communities continues to work on Marine Way from Alton Parkway to Bake Parkway. A completion schedule has not been provided. Construction is inspected by Public Works & Sustainability staff.

### 12. JEFFREY ROAD — PORTOLA PARKWAY TO 3,500 FEET NORTH OF PORTOLA PARKWAY



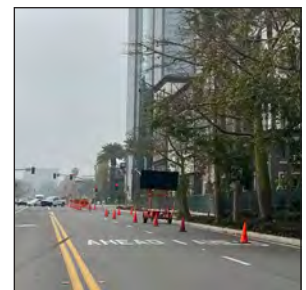
Irvine Company is extending Jeffrey Road from Portola Parkway to 3,500 feet north of Portola Parkway. The project consists of installation of underground utility infrastructure, construction of a pedestrian undercrossing, and roadway improvements.

The project is anticipated to be completed winter 2024/25. Public access to Jeffrey Road, north of Portola Parkway is currently unavailable. Advance notice will be provided to alert motorists to the lane closures. Construction is inspected by Public Works & Sustainability staff. An alternate route is suggested.

### 13. VON KARMAN AVENUE FROM DUPONT DRIVE TO MARTIN, AND MARTIN FROM VON KARMAN AVENUE TO 600 FEET WEST OF VON KARMAN AVENUE

Kantarra West LLC has resumed construction at 18831 Von Karman Avenue. The public sidewalk on Von Karman Avenue from Dupont Drive to Martin, and Martin from Von Karman Avenue to 600 feet west of Von Karman Avenue, has been completed.

Staff is coordinating with Kantarra West LLC to complete the remaining public improvements.



## DEVELOPER PROJECTS (CONTINUED)

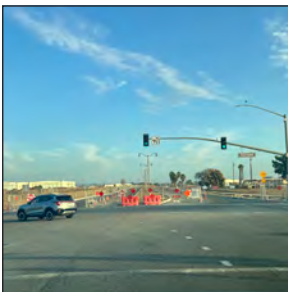
### 14. MAIN STREET — GILLETTE AVENUE TO MERCANTILE



Intracorp is improving Main Street from Gillette Avenue to Mercantile. The project consists of roadway improvements and traffic signal modifications. The project is anticipated to be completed winter 2024/25.

Intermittent lane closures may occur between 9 a.m. and 3 p.m. on weekdays. Access will be maintained for through traffic. The sidewalk along the project frontage may be closed intermittently for the safety of the general public. Advance notice will be provided to alert motorists to the lane closures. Construction is inspected by Community Development and Public Works & Sustainability staff. An alternate route is suggested.

### 15. MARINE WAY FROM SKYHAWK TO 2,700 FT EAST OF SKYHAWK



FivePoint Communities has started construction on Marine Way from Skyhawk to 2,700 ft east of Skyhawk. Demolition, rough grading, and underground utility construction are completed, and street improvements are in progress. A completion

schedule has not been provided. Construction is inspected by Public Works & Sustainability staff.

### 16. BAKE PARKWAY — I-5 TO ROCKFIELD BOULEVARD



FivePoint Communities has started construction on Bake Parkway from I-5 to Rockfield Boulevard. The project consists of roadway widening, new underground utility infrastructures, and construction of Bake Parkway

and Marine Way intersection. A completion schedule has not been provided. Construction is inspected by Public Works & Sustainability staff.

### 17. MUIRLANDS BOULEVARD AND STERLING INTERSECTION

FivePoint Communities has started construction on Muirlands Boulevard and Sterling intersection. The project consists of roadway widening, new underground utility infrastructures, and traffic signal improvements. A completion schedule has not been provided. Construction is inspected by Public Works & Sustainability staff.



### 18. BRYAN AVENUE — MARKET PLACE TO STATE ROUTE 261 AND EL CAMINO REAL — JAMBOREE ROAD TO STATE ROUTE 261

Irvine Company is improving Bryan Avenue, from Market Place to State Route 261, and El Camino Real, from Jamboree Road to State Route 261. The project consists of median modifications, intersection improvements, sidewalk modifications, upgrading



underground utilities, and traffic signal improvements. The project is anticipated to be completed winter 2024/25. Intermittent lane closures may occur between 9 a.m. and 3 p.m. on weekdays. Access will be maintained for through traffic. Advance notice will be provided to alert motorists to the lane closures. Construction is inspected by Community Development and Public Works & Sustainability staff. An alternate route is suggested.

## DEVELOPER PROJECTS (CONTINUED)

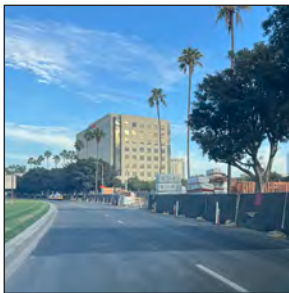
### 19. GREAT PARK BOULEVARD — BOSQUE TO RIDGE VALLEY, BEACON — GREAT PARK BOULEVARD TO CARMINE, AND CARMINE



FivePoint Communities is improving Great Park Boulevard from Bosque to Ridge Valley, Beacon from Great Park Boulevard to Carmine, and Carmine. The project consists of intersection improvements, sidewalk improvements, and upgrading underground

utilities. Project is anticipated to be completed winter 2024/25. Intermittent lane closures may occur between 9 a.m. and 3 p.m. on weekdays. Access will be maintained for through traffic. Advance notice will be provided to alert motorists to the lane closures and parking restrictions. Construction is inspected by Community Development staff. An alternate route is suggested.

### 20. BARRANCA PARKWAY, PACIFICA, AND GATEWAY



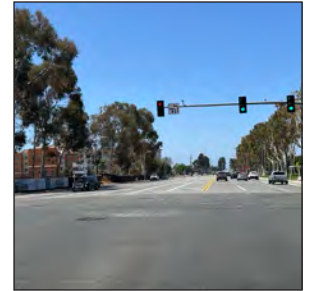
Irvine Company is installing underground utilities and street improvements to serve a five-story apartment building located at Gateway/Pacifica and Pacifica/Barranca Parkway. Construction is scheduled to be completed spring 2025. Temporary lane

closures and restrictions are in place between 9 a.m. to 3 p.m. on weekdays and Saturdays. Access will be maintained for through traffic. Advance notice will be provided to alert motorists to the lane closures. Construction is inspected by Community Development staff. An alternate route is suggested.

### 21. RED HILL AVENUE, MCGAW AVENUE, AND GILLETTE AVENUE

IBC Red Hill Owner LLC is improving underground water and sewer infrastructures for 17320 Red Hill Avenue at Red Hill Avenue, McGaw Avenue, and Gillette Avenue. Construction is scheduled to be completed in winter

2024/25. Temporary lane closures and restrictions are in place between 9 a.m. to 3 p.m. on weekdays. Access will be maintained for through traffic. Advance notice will be provided to alert motorists to the lane closures. Construction is inspected by Public Works & Sustainability staff. An alternate route is suggested.



### 22. RIDGE VALLEY FROM HORNET TO GREAT PARK BOULEVARD, AND HORNET FROM RIDGE VALLEY TO CORSAIR

FivePoint Communities is improving Ridge Valley from Hornet to Great Park Boulevard, and Hornet from Ridge Valley to Corsair. The project consists of driveway improvements, sidewalk improvements, and upgrading underground utilities. The project is anticipated to be

complete by winter 2024/25. Intermittent lane closures may occur between 9 a.m. and 3 p.m. on weekdays. Access will be maintained for through traffic. Advance notice will be provided to alert motorists to the lane closures and parking restrictions. Construction is inspected by Community Development staff. An alternate route is suggested.



# UTILITY PROJECTS

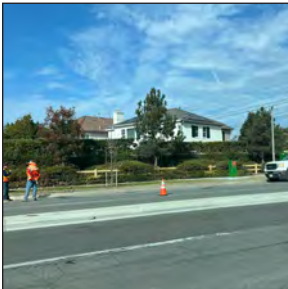
## 23. PORTOLA PARKWAY AND SAND CANYON AVENUE INTERSECTION



IRWD is improving the Portola Parkway and Sand Canyon Avenue intersection as part of the Syphon Reservoir Project. The project consists of modifying existing median curb, striping, and traffic signal improvements at the Portola Parkway and Sand Canyon

Avenue intersection. Project is anticipated to be completed winter 2024/25. Intermittent lane closures may occur between 9 a.m. and 3 p.m. on weekdays. Access will be maintained for through traffic. Advance notice will be provided to alert motorists to the lane closures. Construction is inspected by IRWD and Community Development staff. An alternate route is suggested.

## 24. HARVARD AVENUE AND WARNER AVENUE INTERSECTION



Southern California Gas Company is improving the existing gas pressure regulator station on Harvard Avenue, south of Warner Avenue. Project is anticipated to be completed winter 2024/25. Intermittent lane closures on southbound Harvard Avenue

may occur between 9 a.m. and 3 p.m. on weekdays. Access will be maintained for through traffic. Advance notice will be provided to alert motorists to the closures. Construction is inspected by Public Works & Sustainability staff. An alternate route is suggested.

## 25. CAMPUS DRIVE AND EAST PELTASON DRIVE INTERSECTION

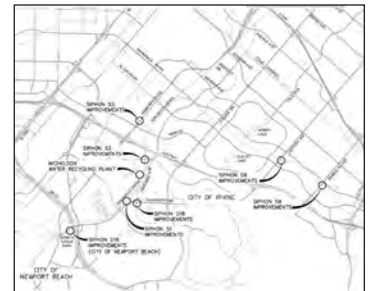


IRWD is retrofitting an existing potable water meter vault, piping, and valve at Campus Drive and East Peltason Drive intersection. Project is anticipated to be completed spring 2025. Intermittent lane closures along the southbound side of East

Peltason Drive between Cornell to Pereira Drive may occur between 9 a.m. and 3 p.m. on weekdays. Access will be maintained for through traffic. Advance notices will be provided to alert motorists to the lane closures. Construction is inspected by IRWD and Community Development staff. Alternate route suggested.

## 26. SEWER SIPHON IMPROVEMENT PROJECT

Irvine Ranch Water District (IRWD) is rehabilitating the existing sewer inverted siphons to improve the structural integrity and conveyance performance at University Drive/Harvard, University Drive/San



Diego Creek Channel, Michelson Drive/Riparian View, Jamboree Road/Barranca Channel, Jeffrey Road/San Diego Creek Channel, and Sand Canyon Avenue/San Diego Creek Channel. The project is anticipated to be completed spring 2025. Access will be maintained for through traffic. The San Diego Creek trail adjacent to the project site may be closed intermittently. Advance notices and detour signs will be provided to alert motorists and trail users of the temporary closures. Construction is inspected by IRWD and Community Development staff. An alternate route is suggested.

## OTHER AGENCIES

### 27. STATE ROUTE 55 — I-405 TO I-5



Orange County Transportation Authority (OCTA) in cooperation with Caltrans is improving SR-55 between I-405 and I-5. The project will add one regular lane and one carpool lane in each direction of SR-55 between I-405 and I-5, improving mobility for

commuters within Orange County. Project is anticipated to be completed fall 2026. Intermittent on-ramp/off-ramp closures along SR-55 may occur. OCTA and Caltrans will provide advance notices to alert motorists and local businesses to the closures. Construction is inspected by Caltrans, and City staff will monitor local traffic. An alternate route is suggested.

### 28. I-5 AND STATE ROUTE 133

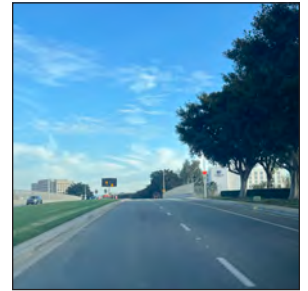


Caltrans is improving I-5 and SR-133 at various locations. The project will rehabilitate bridges, replacing wingwalls, and associate drainage improvements. The project is anticipated to be completed spring 2025. Weeknight lane closures may occur between

9:30 p.m. and 5:30 a.m. Access will be maintained for through traffic. Advance notices will be provided to alert motorists to the closures. Construction is inspected by Caltrans and Community Development staff will monitor local traffic. An alternate route is suggested.

### 29. STATE ROUTE 133 — IRVINE CENTER DRIVE TO I-405

Caltrans is improving the southbound lanes on SR-133 from Irvine Center Drive to I-405. The project will construct new drainage facilities, guard rails, and an auxiliary lane within Caltrans right-of-way. The project is anticipated to be completed summer 2026. Weeknight lane closures may occur between 10 p.m. and 5 a.m. San Diego Creek trail will be closed between Pacifica, and Alton Parkway. Advance notices will be provided to alert motorists to the lane closures, and trail detour signs will be posted. Construction is inspected by Caltrans, and City staff will monitor local traffic. An alternate route is suggested



### 30. MACARTHUR BOULEVARD — DOUGLAS TO I-405

Orange County Public Works is improving ADA curb ramps and pedestrian access routes to John Wayne Airport terminals along MacArthur Boulevard between Douglass and I-405. Work is anticipated to be completed spring 2025. Intermittent lane closures may occur between 9 a.m. and 3 p.m. on weekdays. Advance notices will be provided to alert motorists to the lane closures. Construction is inspected by Orange County Public Works, and City staff will monitor local traffic. Alternate route suggested.



## OTHER AGENCIES (CONTINUED)

### 31. INTERSTATE 405 — I-5 TO SR-55



Caltrans is improving Interstate 405 (I-405) from I-5 to SR-55. The project will add auxiliary lanes, construct retaining walls, and upgrade freeway ramps and pedestrian ADA ramps. The project is anticipated to be completed

summer 2026. Weeknight lane closures may occur between 10 p.m. and 5 a.m. Intermittent freeway ramp closures may occur. Advance notices will be provided to alert motorists to the closures and detour signs will be posted. Construction is inspected by Caltrans, and City staff will monitor local traffic. An alternate route is suggested.

## COMPLETED PROJECTS

- **Civic Center Clock Tower Rehabilitation:** The City has completed rehabilitating the Civic Center Clock Tower at Irvine Civic Center.
- **Trabuco Road Improvements:** The City has completed improving Trabuco Road between Jeffrey Road to Sand Canyon Avenue.
- **Left Turn Elongation Improvements:** The City has completed improving the left turn lanes at Jeffery Road and Roosevelt, Culver Drive and Barranca Parkway, and Warner Avenue and Culver Drive.

City of Irvine, Public Works & Sustainability Department

1 Civic Center Plaza, Irvine, CA 92606

For questions or additional information: 949-724-5546





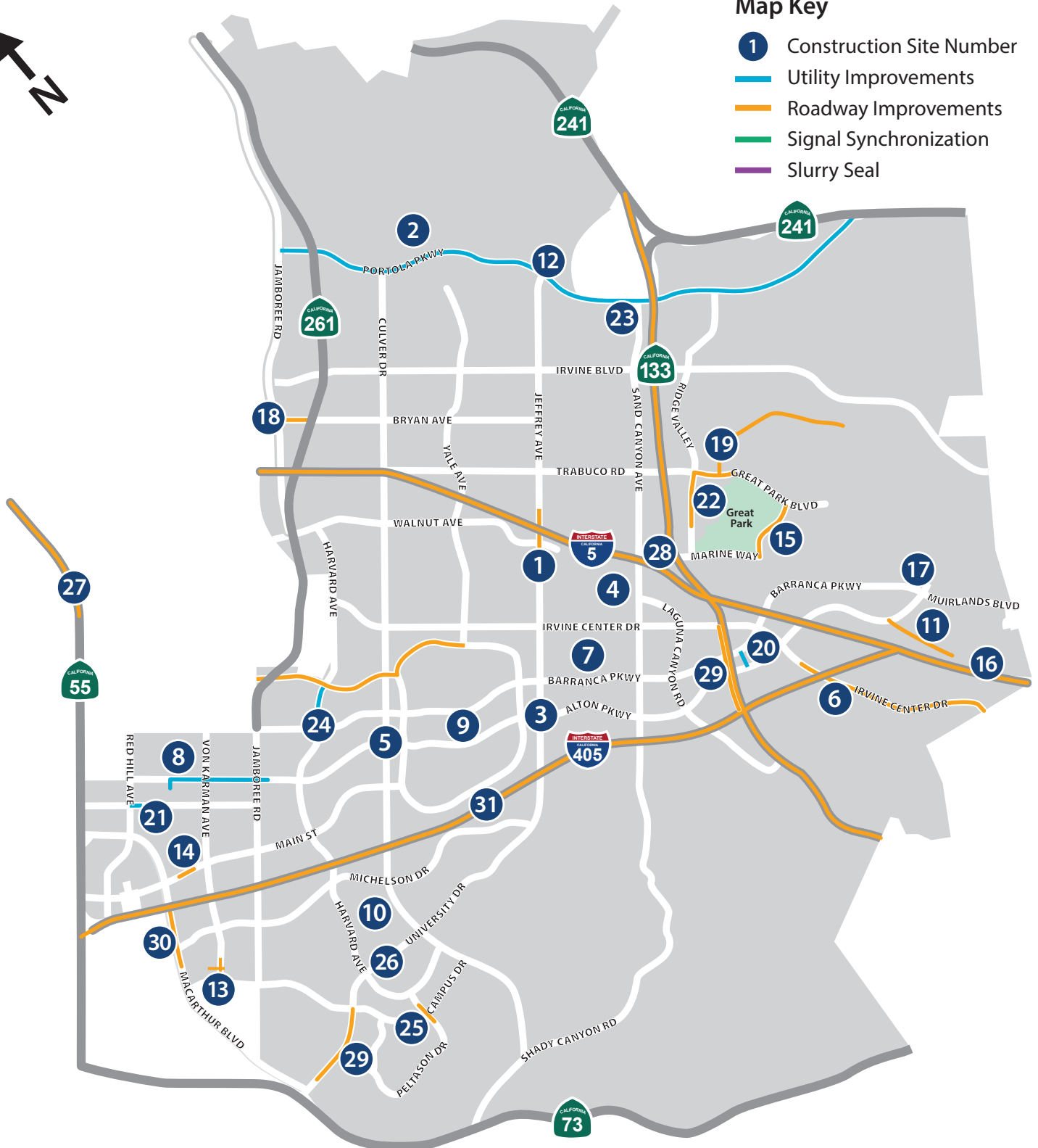
# PUBLIC WORKS & SUSTAINABILITY CONSTRUCTION MAP

JANUARY 2025



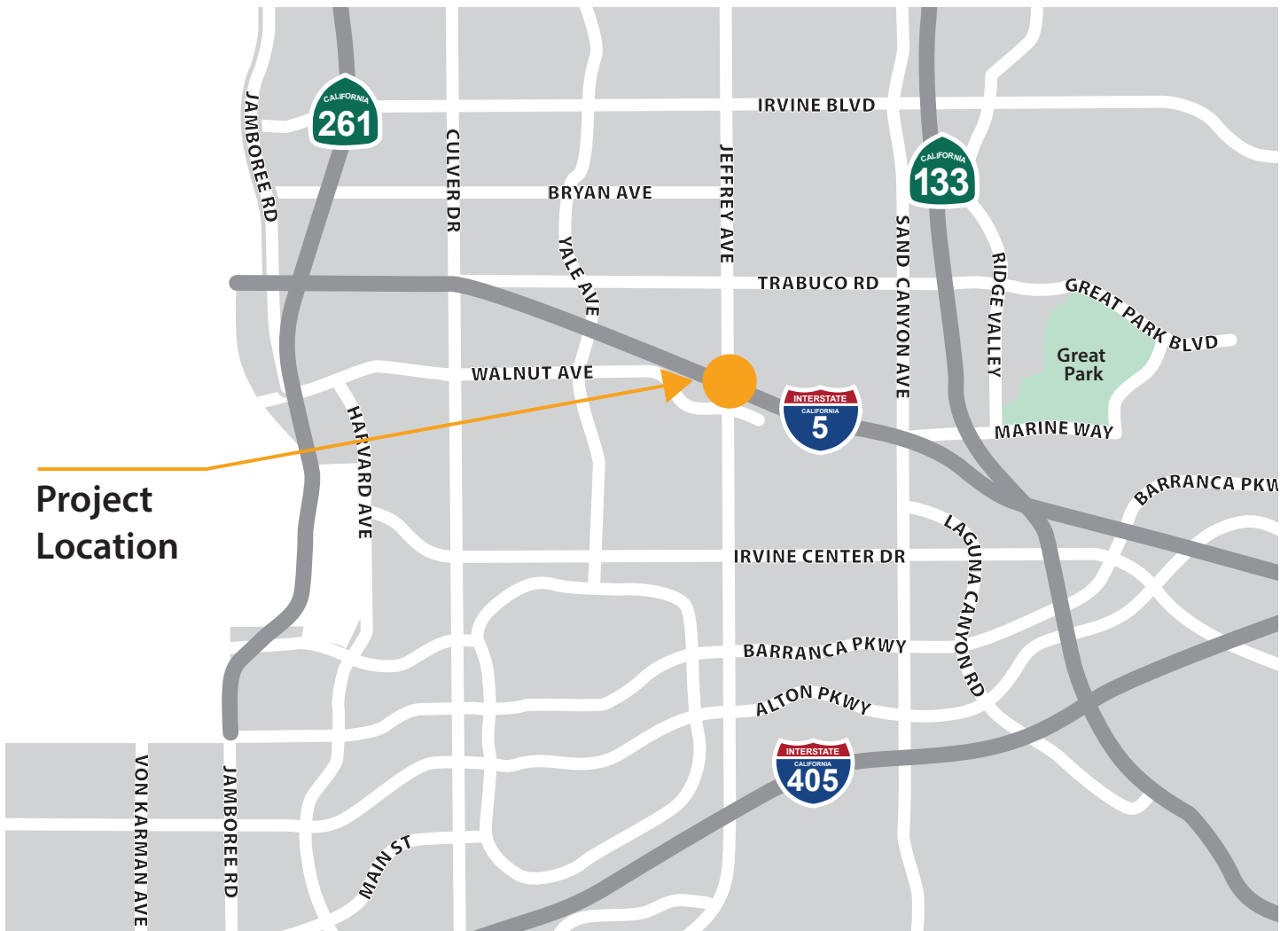
### Map Key

- 1 Construction Site Number
- Utility Improvements
- Roadway Improvements
- Signal Synchronization
- Slurry Seal





# JEFFREY OPEN SPACE TRAIL (JOST)/ I-5 BICYCLE AND PEDESTRIAN BRIDGE PROJECT





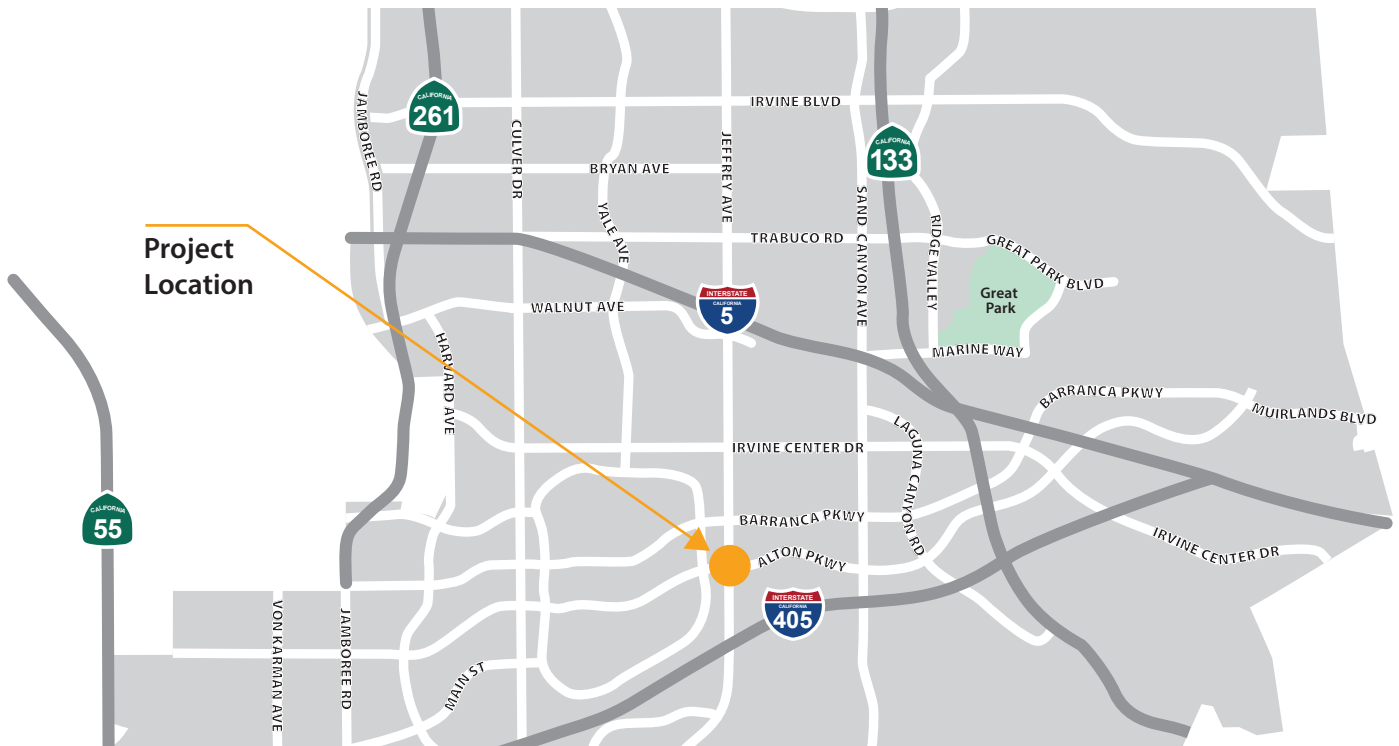
# NORTHWOOD AQUATICS CENTER DECK REPLACEMENT



Project  
Location

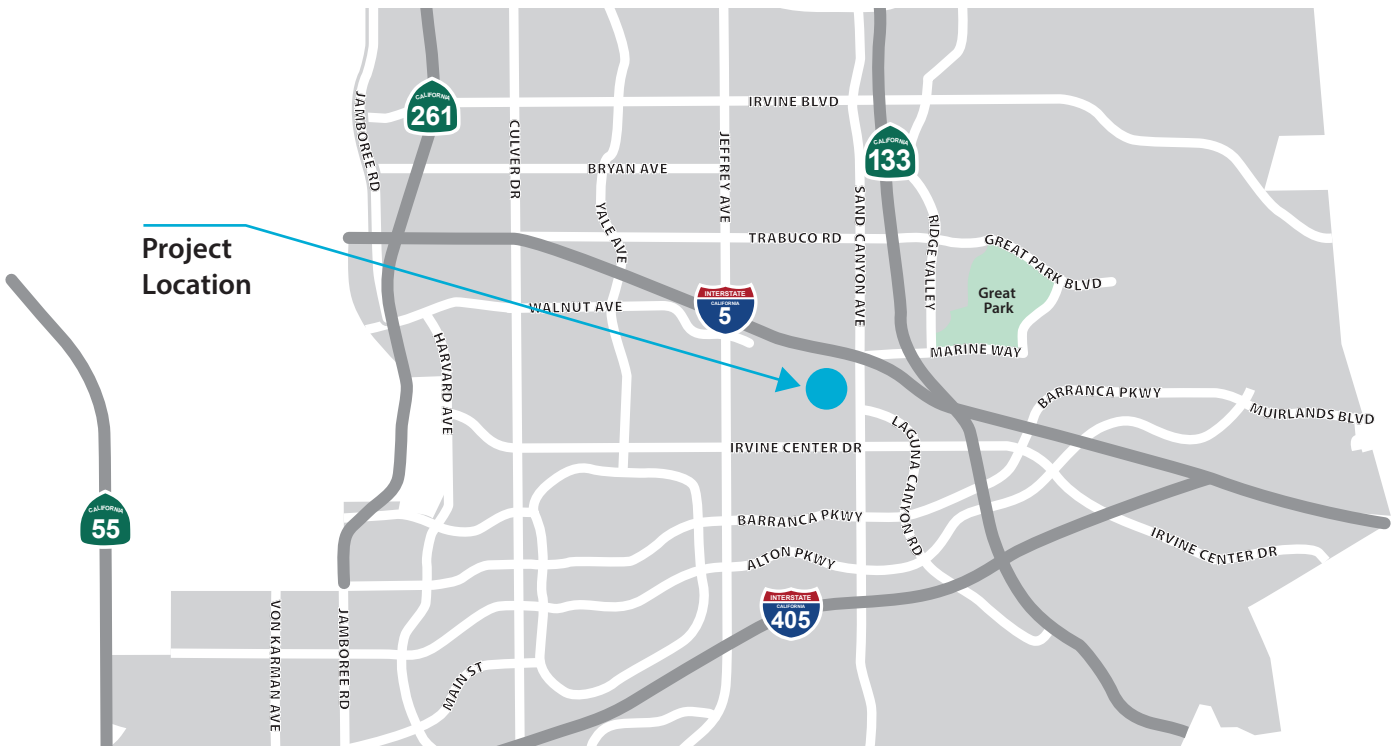


# JEFFREY/ALTON INTERSECTION IMPROVEMENTS



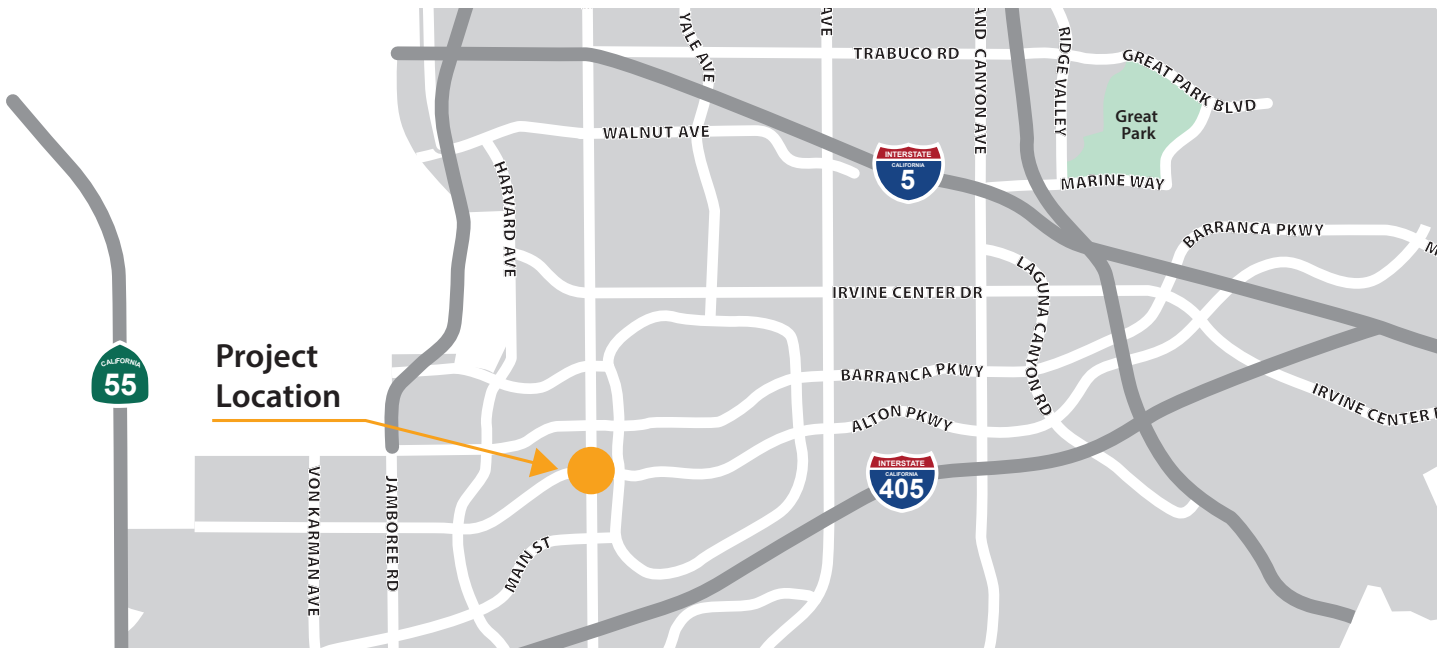


# IRVINE ANIMAL CARE CENTER EXPANSION AND RENOVATION PROJECT



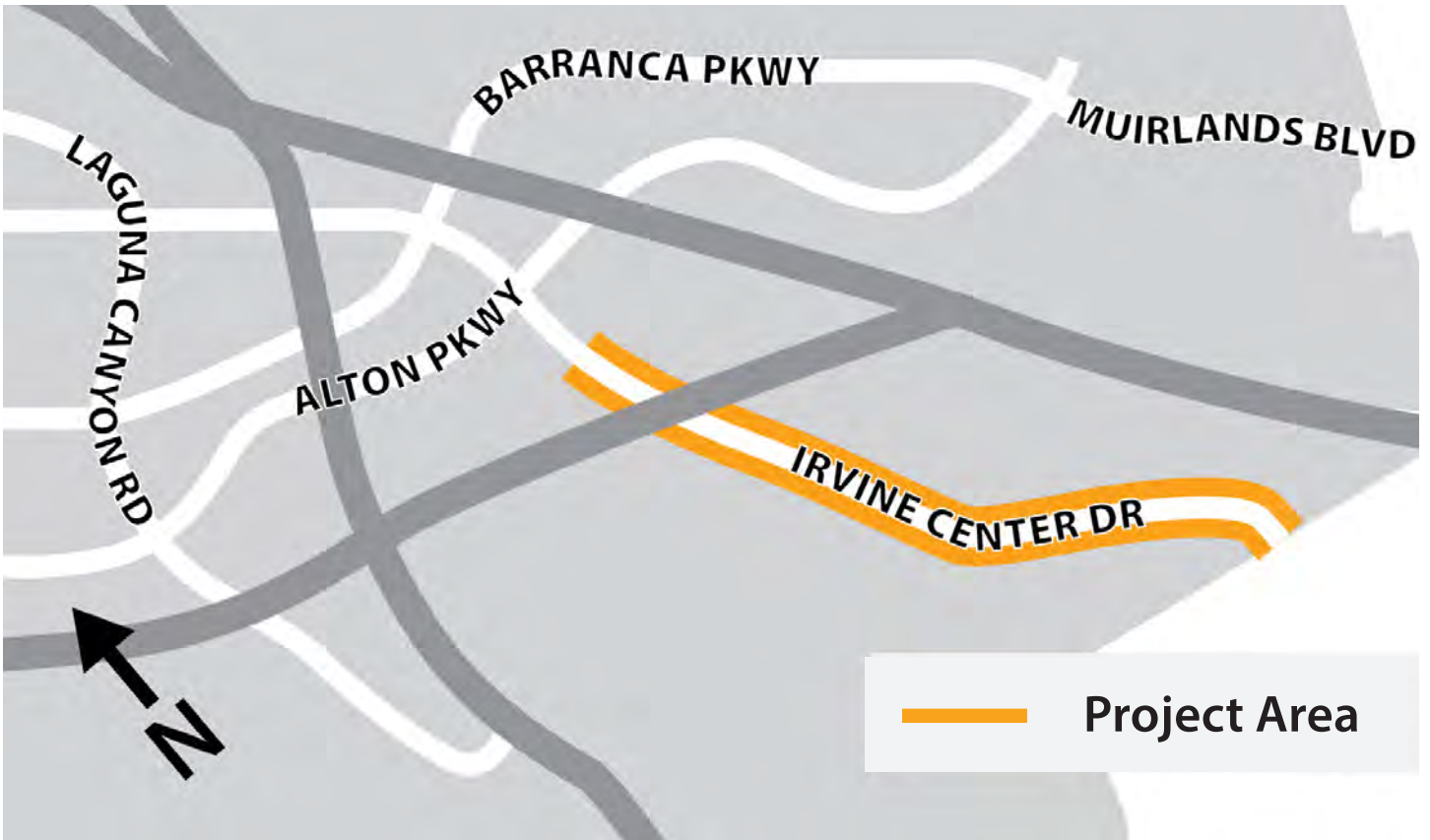


# CULVER/ALTON INTERSECTION IMPROVEMENTS



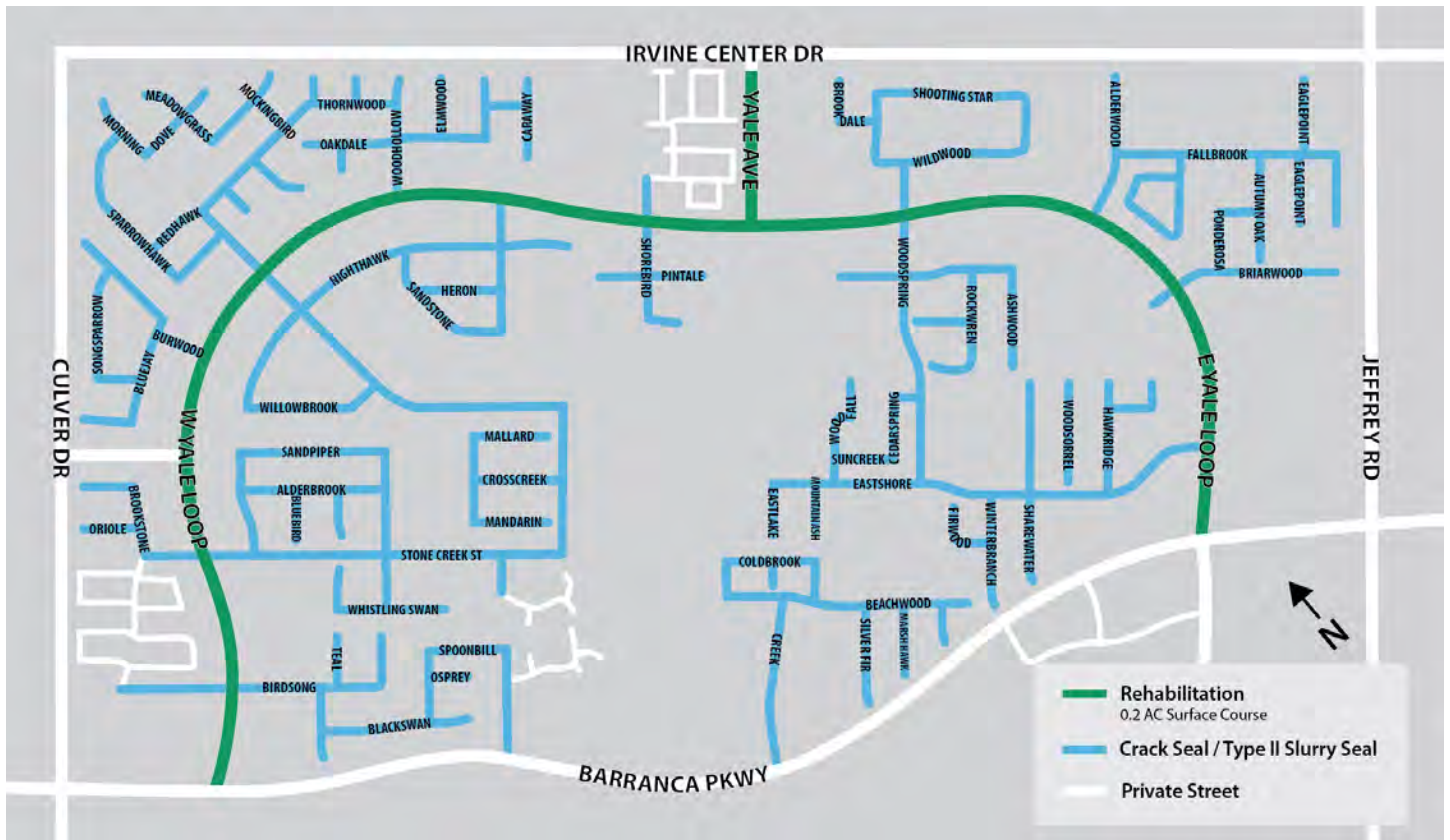


# IRVINE CENTER DRIVE PAVEMENT REHABILITATION (PACIFICA TO LAKE FOREST DRIVE)





# ON CALL STREET REHAB AND SLURRY SEAL — WOODBRIDGE NORTH







# ARMSTRONG FIBER INSTALLATION





# MIKE WARD COMMUNITY PARK PICKLEBALL COURTS





# RANCHO SENIOR CENTER IMPROVEMENT PROJECT

