



PUBLIC WORKS & SUSTAINABILITY

MONTHLY CONSTRUCTION

PROJECTS IN THE CITY OF IRVINE

DECEMBER 2025

CITY PROJECTS

1. DEANNA MANNING STADIUM IMPROVEMENTS PROJECT



The Deanna Manning Stadium Improvements Project will be completed in three phases to minimize impacts on sports activities. Phase 1 includes installing permanent outfield fencing, a new warning track, foul ball posts, dugout flooring, and

irrigation upgrades. Phase 2 will replace the backstop with a new netting system, relocate the scoreboard, and install a new videoboard. Phase 3 will upgrade the concession stand, media building, and ticket booth. Construction for phase 1 is currently underway, with phase 2 scheduled for winter 2026 and phase 3 for spring 2027 due to the field's extensive use and limited availability for construction. Construction is inspected by Public Works & Sustainability staff.

UPDATE

This past month, the contractor started removing the temporary outfield fencing and dugout flooring, and started the re-design of the existing irrigation needed due to the installation of the new warning track. Next month, the contractor will continue to work on the irrigation updates, install new fence posts, warning track, and dugout flooring.

2. PUBLIC SAFETY LOCKER ROOM EXPANSION

The Public Safety Locker Room Expansion project

will expand and renovate the existing locker room on the first floor of City Hall A-wing. Work includes tenant, mechanical, electrical, and plumbing improvements. The project is expected to be completed in Summer 2026, with construction inspected by Public Works & Sustainability staff, supported by Building & Safety.



UPDATE

This past month, the trailer contractor finished installing the temporary locker trailers and associated utility connections. This month, the contractor for the Locker Room Expansion will mobilize to the project site and begin demolition and other initial scopes of the project.

3. RANCHO SENIOR CENTER DRAINAGE IMPROVEMENTS

The Rancho Senior Center Drainage Improvements project corrects the drainage pattern at the Senior Center by regrading hardscape and replacing/installing new storm drainage as needed, to prevent stormwater intrusion into the facility during storm events. The project is anticipated to be completed winter 2025. Construction is inspected by Public Works & Sustainability staff.



City of Irvine, Public Works & Sustainability Department
1 Civic Center Plaza, Irvine, CA 92606

For questions or additional information: 949-724-5546

ATTACHMENT 1

CITY PROJECTS (CONTINUED)

UPDATE

This past month, the contractor completed demolition of all concrete improvements. This coming month, the contractor will begin trenching and placing new storm drain improvements.

4. SLURRY SEAL REHABILITATION AND RESTRIPING ON PUSAN WAY



The street rehabilitation and slurry seal project along Pusan Way in the Great Park Neighborhood involves slurry seal rehabilitation, repair, and restriping between Irvine Boulevard and Cadence. The intent of the work is to improve roadway surface

quality, enhance safety for all road users, and extend the life of the pavement. The project is anticipated to be completed fall 2025. Construction is inspected by Public Works & Sustainability staff.

UPDATE

This past month, the contractor completed the slurry seal operation and will proceed with the application of final striping on this project.

5. ANNUAL STREET REHABILITATION AND SLURRY SEAL – WALNUT AND DEERFIELD NEIGHBORHOOD



The annual street rehabilitation and slurry seal project in the Walnut Area Neighborhood including College Park, The Colony, Deerfield, and Hearthstone, involves slurry seal, cold milling, roadway excavation and paving, concrete curb, gutter,

ramps, and sidewalk work; signing and striping, and adjustments to Irvine Ranch Water District (IRWD) and other utility facilities. The purpose of the project is to improve roadway surface quality, enhance safety for all road users, and extend the life of the pavement. Temporary lane closures may occur intermittently

between 9 a.m. and 3 p.m., alternate routes are suggested. The project is anticipated to be completed spring 2026. Construction is inspected by Public Works & Sustainability staff.

UPDATE

This past month, the contractor initiated phase 1 of the project, which includes concrete improvements such as sidewalks, curb ramps, and driveways. In the coming month, the contractor will continue work with the grind and overlay operations as well as the slurry seal application.

6. WALNUT AVENUE IMPROVEMENTS

The Walnut Avenue Improvements project involves concrete sidewalk and pavement upgrades and improvements, asphalt pavement rehabilitation and repair, and re-striping and restoration of traffic control devices. Construction is anticipated to be completed by winter 2025. Construction is inspected by Public Works & Sustainability staff.



UPDATE

This past month, the contractor completed phase 1 of the concrete sidewalk repairs along Walnut Avenue. This coming month, the contractor will start phase 2, which includes grind and overlay of asphalt concrete along Walnut Avenue.

7. MARINE WAY UNDERCROSSING

The Marine Way Undercrossing project entails construction of a new grade-separated rail-roadway crossing to connect the north and south segments of Marine Way under the Southern California Regional Rail Authority (SCRRA) railroad right-of-way.

Additionally, a below grade channel that relocates the existing Borrego Channel, will be installed under the



CITY PROJECTS (CONTINUED)

SCRRA railroad right-of-way south of the proposed undercrossing. The project is anticipated to be completed spring 2027. Construction is inspected by Public Works & Sustainability staff.

UPDATE

This past month, the contractor continued working to secure all SCRRA right of entry permits. SoCalGas is on site relocating their 30" gas line and Verizon is working to relocate their conflicting facilities. This coming month, the contractor will install on-site construction offices and begin grading the site to facilitate shoring and box structure construction.

8. PUBLIC SAFETY EVIDENCE AREA MODIFICATION



The Public Safety Evidence Area Modification project will replace the existing evidence storage shelving with a high-density storage system, along with associated site modifications to support the new installation. The upgraded

system will enhance storage capacity and improve organization within Public Safety's Evidence area. The project is anticipated to be completed winter 2025–26. Construction is inspected by Public Works & Sustainability staff.

UPDATE

This past month, staff reviewed the geotechnical findings and confirmed that the existing underlayment beneath the concrete slab in the project area is not suitable to support the high-density storage system. Based on these findings, the geotechnical consultant and structural engineer will re-engineer the slab, including construction of a new underlayment. Next month, the consultant team will prepare a full design package for further coordination with the contractor.

9. JAMBOREE & MICHELSON PEDESTRIAN BRIDGE

The Jamboree & Michelson Pedestrian bridge project includes construction of a 175-foot-long bridge traversing Jamboree Road at Michelson Drive. The bridge features structural stainless steel, elevators, glass curtain walls, and decorative Corian cladding. Temporary and/or permanent lane closures may occur intermittently throughout the project's timeline. Advance notices and detour signs will be provided to alert motorists of lane closures. The project is anticipated to be completed summer 2027. Construction is inspected by Public Works & Sustainability staff.

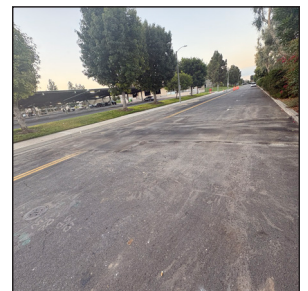


UPDATE

This past month, the contractor drilled CIDH piles for the elevator towers and staircases, continued exploratory work to relocate conflicting utilities, and added right turn lanes in the southbound and westbound directions to ease traffic congestion. Next month, the pile caps will be excavated, formed, and poured in preparation for erecting structural elements.

10. HERITAGE PARK IMPROVEMENTS PROJECT

The Heritage Park Improvements project will add two additional parking lots within the park, as well as an additional competition pool at William Woollett Jr. Aquatics Center. As part of this project, the storm drain improvements, on Escolar Avenue northwest of Irvine High School, were performed when school was not in session. The storm drain improvements involved trenching, installing pipe, and paving. The storm drain work has been completed and the remaining scope of this project



CITY PROJECTS (CONTINUED)

is expected to be advertised for competitive bid in winter 2025–26. Construction is inspected by Public Works & Sustainability staff.

UPDATE

This past month, all improvements related to the installation of the storm drain on Escolar Avenue were completed. The construction was paused to allow the redesign of a conflicting existing IRWD water line and to schedule the removal of that existing pipe by a specialty sub-contractor. Next month, the remaining storm drain improvement work will be complete, and the project will move into advertisement for competitive bids. Construction is expected to begin in winter 2025.

11. HARVARD AVENUE AND MICHELSON DRIVE INTERSECTION IMPROVEMENTS



The Harvard/Michelson Intersection Improvement project includes cold milling, roadway excavation and paving, concrete curb, gutter, curb ramps, driveways, and sidewalk, water quality structures, utility protection relocation, signing and

striping, traffic signal modification, landscape and irrigation construction, and adjustments of IRWD and other utility facilities. Temporary lane closures may occur intermittently between 9 a.m. and 3 p.m. weekdays. Alternate routes are suggested during the duration of this project. This project is anticipated to be completed summer 2026. Construction is inspected by Public Works & Sustainability staff.

UPDATE

This past month, the contractor worked on importing fill to build up the slope adjacent to Harvard Avenue. Next month, the contractor will continue working on the slope and traffic signal modifications in phase 2, which includes grading, tree removal, improvements, on Escolar Avenue northwest of Irvine High School, improvements, and traffic signal modifications.

12. ANNUAL STREET REHABILITATION AND SLURRY SEAL – WOODBRIDGE NORTH NEIGHBORHOOD

The Annual Street Rehabilitation and Slurry Seal – Woodbridge North Neighborhood project includes cold milling, roadway excavation and paving, concrete curb, gutter, ramps, and sidewalk, signing and striping, and adjustments of IRWD and other utility facilities. Temporary lane closures may occur intermittently between 9 a.m. and 3 p.m. Alternate routes are suggested during the duration of this project. This project is anticipated to be completed winter 2025. Construction is inspected by Public Works & Sustainability staff.

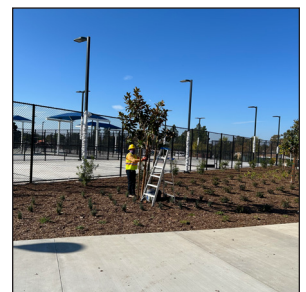


UPDATE

This past month, the contractor completed slurry seal application in the neighborhood. In the coming month, the contractor will continue with the final punchlist items and striping to finalize the project.

13. MIKE WARD COMMUNITY PARK PICKLEBALL COURTS

The Mike Ward Community Park Pickleball Courts project includes the construction of eight new pickleball courts and four shade structures within Mike Ward Community Park. The project also includes the addition of picnic tables, benches, drinking fountains, a new restroom building, and site lighting improvements. No lane closures will occur, and staff will coordinate with Community & Library Services to mitigate construction impacts. The pickleball court is anticipated to open January 2026. Construction is inspected by Public Works & Sustainability staff.



CITY PROJECTS (CONTINUED)

UPDATE

This past month, pickleball court concrete pads were poured and fencing was installed. The contractor continued landscape and irrigation work and began relocation of a fire hydrant and waterline installation. Construction of the new restroom building also continued. Next month, fencing installation will continue for the pickleball courts, landscape and irrigation material will be placed, and site furnishings will be installed. Site furniture will be assembled and installed, landscape will be planted, and the restroom building will be completed.

14. IRVINE ANIMAL CARE CENTER RENOVATIONS



The Irvine Animal Care Center Renovations project expands and renovates the Irvine Animal Care Center and its site features. Improvements include additions to the administration building, a new clinic building, and an in-fill administration

addition. Renovations will be made to the existing administration building, cat/small animals housing, and kennels. Site improvements include modifications to the secured parking area, a new trash enclosure, re-grading, drainage enhancements, entrance modifications, new activity yards, and landscaping. The project is anticipated to be completed fall 2026. Construction is inspected by Public Works & Sustainability staff.

UPDATE

This past month, the contractor completed the front entry signage, roofing, lighting, cabinetry, and other interior improvements for the new front entry and clinic building.

In the coming month, work will focus on installing new furniture and interior finishes for the clinic and front entry building.

15. JEFFREY OPEN SPACE TRAIL (JOST)/ INTERSTATE 5 (I-5) BICYCLE AND PEDESTRIAN BRIDGE

The JOST/I-5 Bicycle and Pedestrian Bridge project includes construction of a Class I bicycle and pedestrian connection of the Jeffrey Open Space Trail. Temporary lane closures may occur intermittently between 9 a.m. and 3 p.m. on City streets and along Interstate 5. Pedestrian and bicyclist access will be maintained during construction. Advance notices and detour signs will be provided to alert motorists of the lane closures. The project is anticipated to be completed summer 2026. Construction is inspected by Public Works & Sustainability staff.



UPDATE

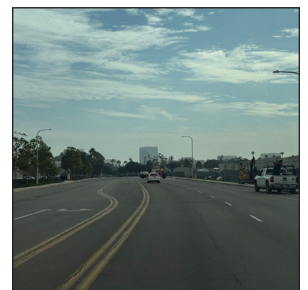
This past month, the contractor worked on the surface finish of the bridge soffit and exterior girders. This coming month, the contractor will continue with the concrete surface finishing and also construct site walls in the Manassero farm area.

DEVELOPER PROJECTS

16. WATERWORKS WAY – LAGUNA CANYON ROAD TO DISCOVERY

Maruchan is expanding the warehouse along Waterworks Way, from Laguna Canyon Road to Discovery. Temporary lane closures will occur along the southbound side of Waterworks Way, from Laguna

Canyon Road to Discovery, between 7 a.m. and 5:30 p.m. weekdays. Access will be maintained for through-traffic. Advance notices and detour signs will be provided to alert motorists of lane



DEVELOPER PROJECTS

closures. Alternate routes are suggested during the duration of this project. This project is anticipated to be completed winter 2025. Traffic control is inspected by Public Works & Sustainability staff.

17. RED HILL AVENUE, MCGAW AVENUE, AND GILLETTE AVENUE



IBC Red Hill Owner LLC is improving underground water and sewer infrastructures for 17320 Red Hill Avenue at Red Hill Avenue, McGaw Avenue, and Gillette Avenue. Temporary lane closures and restrictions are in place between 9 a.m.

and 3 p.m. weekdays. Access will be maintained for through-traffic. Advance notices will be provided to alert motorists of lane closures. Alternate routes are suggested during the duration of this project. Construction is scheduled to be completed spring 2026. Construction is inspected by Public Works & Sustainability staff.

18. BARRANCA PARKWAY, PACIFICA, AND GATEWAY



Irvine Company is installing underground utilities and street improvements to serve a five-story apartment building located at Gateway/Pacifica and Pacifica/Barranca Parkway. Temporary lane closures and restrictions are in place between 9 a.m.

to 3 p.m. weekdays and Saturdays. Access will be maintained for through-traffic. Advance notices will be provided to alert motorists of lane closures. Alternate routes are suggested during the duration of this project. Construction is scheduled to be completed in winter 2025. Construction is inspected by Community Development staff.

19. GREAT PARK BOULEVARD – BOSQUE TO RIDGE VALLEY, BEACON – GREAT PARK BOULEVARD TO CARMINE, AND CARMINE – INTERVAL AND MAGNET

FivePoint Communities is improving Great Park Boulevard from Bosque to Ridge Valley, Beacon from Great Park Boulevard to Carmine, and Carmine from Interval to Magnet. The project includes intersection improvements, sidewalk improvements, and upgrading underground utilities. Intermittent lane closures may occur between 9 a.m. and 3 p.m. weekdays. Access will be maintained for through-traffic. Advance notices will be provided to alert motorists of lane closures and parking restrictions. Alternate routes are suggested during the duration of this project. This project is anticipated to be completed winter 2025. Construction is inspected by Community Development staff.



20. BRYAN AVENUE – MARKET PLACE TO STATE ROUTE 261 (SR-261) AND EL CAMINO REAL – JAMBOREE ROAD TO SR-261

Irvine Company is improving Bryan Avenue, from Market Place to SR-261 and El Camino Real, from Jamboree Road to SR-261. The project includes median modifications, intersection improvements, sidewalk modifications, upgrading underground utilities, and traffic signal improvements. Intermittent lane closures may occur between 9 a.m. to 3 p.m. weekdays. Access will be maintained for through-traffic. Advance notices will be provided to alert motorists of lane closures. Alternate routes are suggested during the duration of this project. This project is anticipated to be completed in winter 2025. Construction is inspected by Community Development and Public Works & Sustainability staff.



DEVELOPER PROJECTS (CONTINUED)

21. BAKE PARKWAY – I-5 TO ROCKFIELD BOULEVARD



FivePoint Communities has started construction of Bake Parkway from I-5 to Rockfield Boulevard. The project consists of roadway widening, new underground utility infrastructures, and construction of Bake Parkway and Marine Way

intersection. A completion schedule has not been provided. Construction is inspected by Public Works & Sustainability staff.

22. MARINE WAY – FROM SKYHAWK TO 2,700 FEET EAST OF SKYHAWK



FivePoint Communities has started construction of Marine Way, from Skyhawk to 2,700 feet east of Skyhawk. Demolition, rough grading, and underground utility construction are completed, and street improvements are in progress. A completion

schedule has not been provided. Construction is inspected by Public Works & Sustainability staff.

23. JEFFREY ROAD – PORTOLA PARKWAY TO 3,500 FEET NORTH OF PORTOLA PARKWAY



The Irvine Company is extending Jeffrey Road from Portola Parkway, to 3,500 feet north of Portola Parkway. The project includes installation of underground utility infrastructure, construction of a pedestrian undercrossing, and roadway improvements.

Public access to Jeffrey Road, north of Portola Parkway, is currently unavailable. Advance notices

will be provided to alert motorists of lane closures. Alternate routes are suggested during the duration of this project. Construction is inspected by Public Works & Sustainability staff.

24. MARINE WAY – ALTON PARKWAY TO BAKE PARKWAY

FivePoint Communities continues to work on Marine Way from Alton Parkway to Bake Parkway. A completion schedule has not been provided. Construction is inspected by Public Works & Sustainability staff.



25. LAGUNA CANYON ROAD – IRVINE CENTER DRIVE TO DISCOVERY, AND DISCOVERY – LAGUNA CANYON ROAD TO 800 FEET EAST OF LAGUNA CANYON ROAD

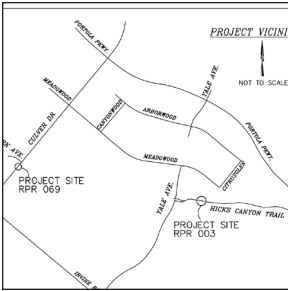
Irvine Company is improving existing sewer infrastructures in Laguna Canyon Road from Irvine Center Drive to Discovery, and Discovery from Laguna Canyon Road to 800 feet east of Laguna Canyon Road. Intermittent lane closures may occur between 10 p.m. and 5 a.m. weekdays.

Access will be maintained for through-traffic. Advance notices and detour signs will be provided to alert motorists of the temporary closures and detour routes. Alternate routes are suggested during the duration of this project. This project is anticipated to be completed in winter 2025–26. Construction is inspected by IRWD and Public Works & Sustainability staff



UTILITY PROJECTS

26. HICKS CANYON TRAIL – CULVER DRIVE TO PORTOLA PARKWAY



IRWD is removing existing pressure-reducing stations in Hicks Canyon Trail between Culver Drive and Portola Parkway. Intermittent trail closures may occur between 9 a.m. and 3 p.m. on weekdays. Advance notices and detour signs will be provided to alert

trail users of the temporary closures. Alternate routes are suggested during the duration of this project. This project is anticipated to be completed winter 2025. Construction is inspected by IRWD, OC Parks, and Public Works & Sustainability staff.

27. SEWER SIPHON IMPROVEMENT PROJECT



IRWD is rehabilitating the existing sewer inverted siphons to improve the structural integrity and conveyance performance at University Drive/Harvard Avenue, University Drive/San Diego Creek Channel, Michelson Drive/Riparian

View, Jamboree Road/Barranca Channel, Jeffrey Road/San Diego Creek Channel, and Sand Canyon Avenue/San Diego Creek Channel. Access will be maintained for through-traffic. San Diego Creek trail, adjacent

to the project site, may be closed intermittently. Advance notices and detour signs will be provided to alert motorists and trail users of the temporary closures. Alternate routes are suggested during the duration of this project. This project is anticipated to be completed in spring 2026. Construction is inspected by IRWD and Community Development staff.



28. TECHNOLOGY DRIVE WEST OF ALTON PARKWAY, AND ADA – ALTON PARKWAY TO BARRANCA PARKWAY

IRWD is improving existing recycled water infrastructure in Technology Drive west of Alton Parkway, and Ada from Alton Parkway to Barranca Parkway. Intermittent lane closures may occur between 6 a.m. and 7 p.m. weekdays. Access will be maintained for through-traffic.



Advance notices and detour signs will be provided to alert motorists of the temporary closures. Alternate routes are suggested during the duration of this project. This project is anticipated to be completed winter 2025–26. Construction is inspected by IRWD and Public Works & Sustainability staff.

OTHER AGENCIES

29. INTERSTATE 405 – I-5 TO SR-55

Caltrans is improving I-405, from I-5 to SR-55. The project will add auxiliary lanes, construct retaining walls, and upgrade freeway ramps and pedestrian ADA-compliant ramps. Weeknight lane closures may occur between 10 p.m. and 5 a.m. Intermittent freeway ramp closures may occur.

Advance notices will be provided to alert motorists

to the closures and detour signs will be posted. Alternate routes are suggested during the duration of this project. The project is anticipated to be completed summer 2026. Construction is inspected by Caltrans, and City staff will monitor local traffic.



OTHER AGENCIES

30. STATE ROUTE 133 – IRVINE CENTER DRIVE TO I-405



Caltrans is improving the southbound lanes on SR-133 from Irvine Center Drive to I-405. The project includes construction of new drainage facilities, guard rails, and an auxiliary lane within Caltrans right-of-way. Weeknight lane closures may occur between

10 p.m. and 5 a.m. San Diego Creek trail will be closed between Pacifica and Alton Parkway.

Advance notices will be provided to alert motorists of lane closures, and trail detour signs will be posted. Alternate routes are suggested during the duration of this project. This project is anticipated to be completed summer 2026. Construction is inspected by Caltrans, and City staff will monitor local traffic.

31. STATE ROUTE 55 – I-405 TO I-5

Orange County Transportation Authority (OCTA), in cooperation with Caltrans, is improving SR-55, between I-405 and I-5 Freeway. This project will add one regular lane and one carpool lane in each direction of SR-55, between I-405 and I-5, improving mobility for commuters within Orange County. Intermittent on-

ramp/off-ramp closures along SR-55 may occur. OCTA and Caltrans will provide advance notices to alert motorists and local businesses of closures. Alternate routes are suggested during the duration of this project. This project is anticipated to be completed in fall 2026. Construction is inspected by Caltrans, and City staff will monitor local traffic.



32. MASON REGIONAL PARK TRAIL IMPROVEMENTS

OC Parks is installing eight bridges over the trails in Mason Regional Park. The wilderness area along University Drive, between Ridgeline Drive and Culver Drive, will be closed during construction. OC Parks will provide advance notices to alert trail users of the closures.



Alternate routes are suggested during the duration of this project. This project is anticipated to be completed spring 2026. Construction is inspected by OC Parks.

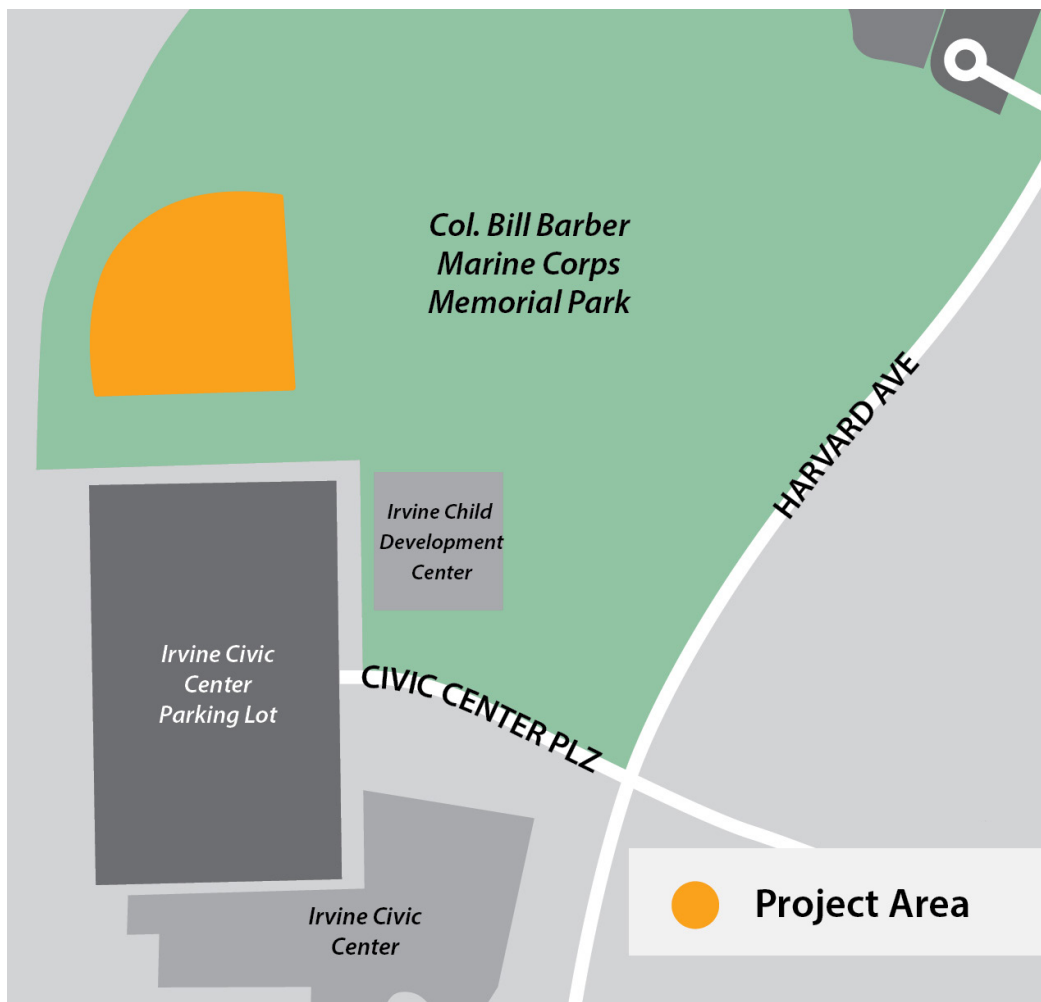
COMPLETED PROJECTS

- **Public Safety RTCC Tenant Improvements:** The Public Safety Real Time Crime Center (RTCC) Tenant Improvements project involves renovating the existing space on the second floor of City Hall's A-wing to expand the RTCC workspace. The project is anticipated to be completed fall 2026. Construction is inspected by Public Works & Sustainability staff.
- **Public Safety 1st Floor Offices:** The Public Safety 1st Floor Offices project will transform the current partitioned areas within the Records section of Public Safety into two separate offices. The project is anticipated to be completed fall 2025. Construction is inspected by Public Works & Sustainability staff.
- **Civic Center Electrical System Upgrade (Triple Switch):** The Civic Center Electrical System Upgrade (Triple Switch) project involves electrical upgrades at City Hall including the installation of a manual transfer switch to allow for temporary power connectivity. The project is anticipated to be completed fall 2025. Construction is inspected by Building & Safety and Public Works & Sustainability staff.





DEANNA MANNING STADIUM IMPROVEMENTS PROJECT





PUBLIC SAFETY LOCKER ROOM EXPANSION





RANCHO SENIOR CENTER DRAINAGE IMPROVEMENTS



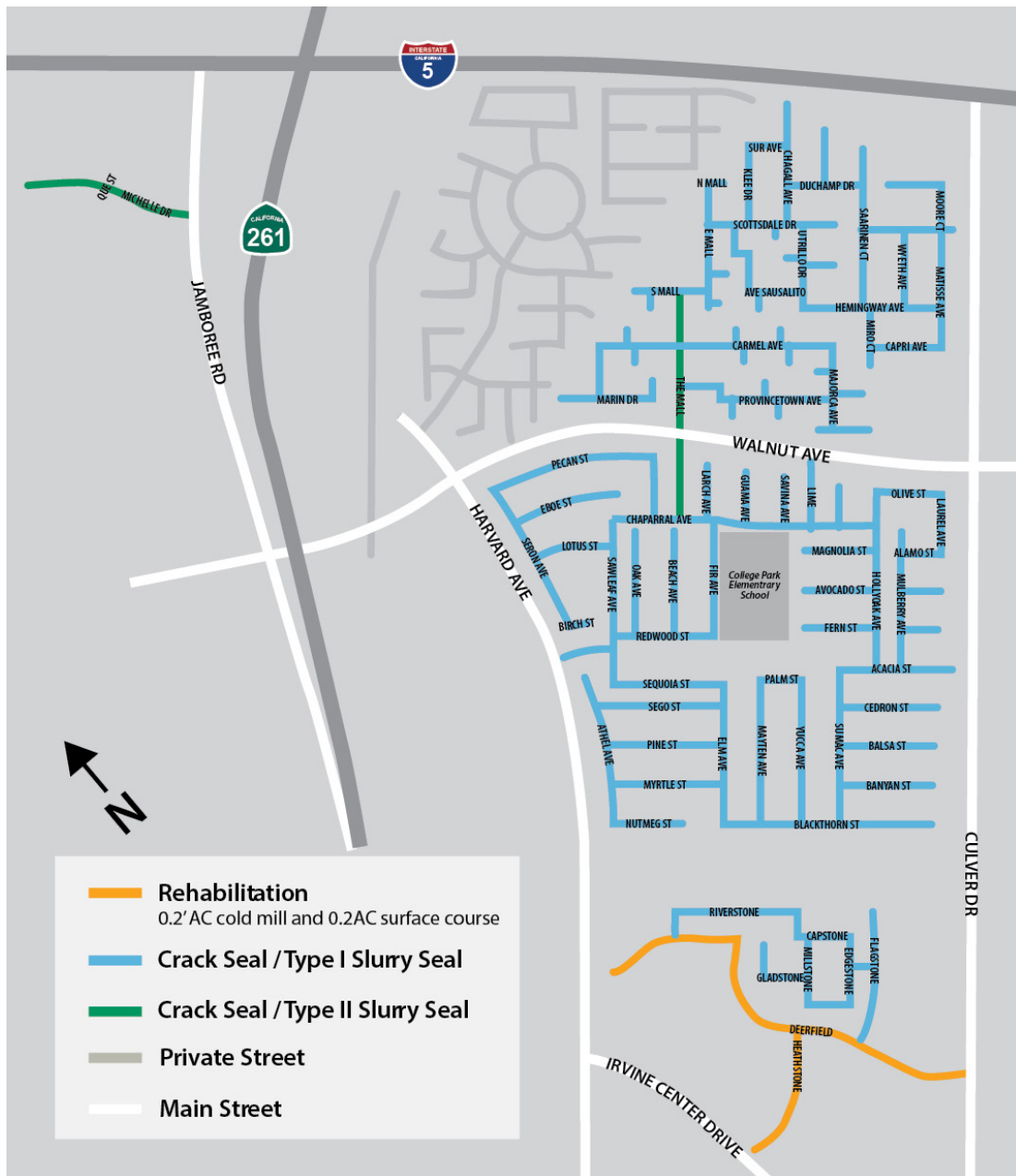


SLURRY SEAL REHABILITATION AND RESTRIPING ON PUSAN WAY





ANNUAL STREET REHABILITATION AND SLURRY SEAL – WALNUT AND DEERFIELD NEIGHBORHOOD



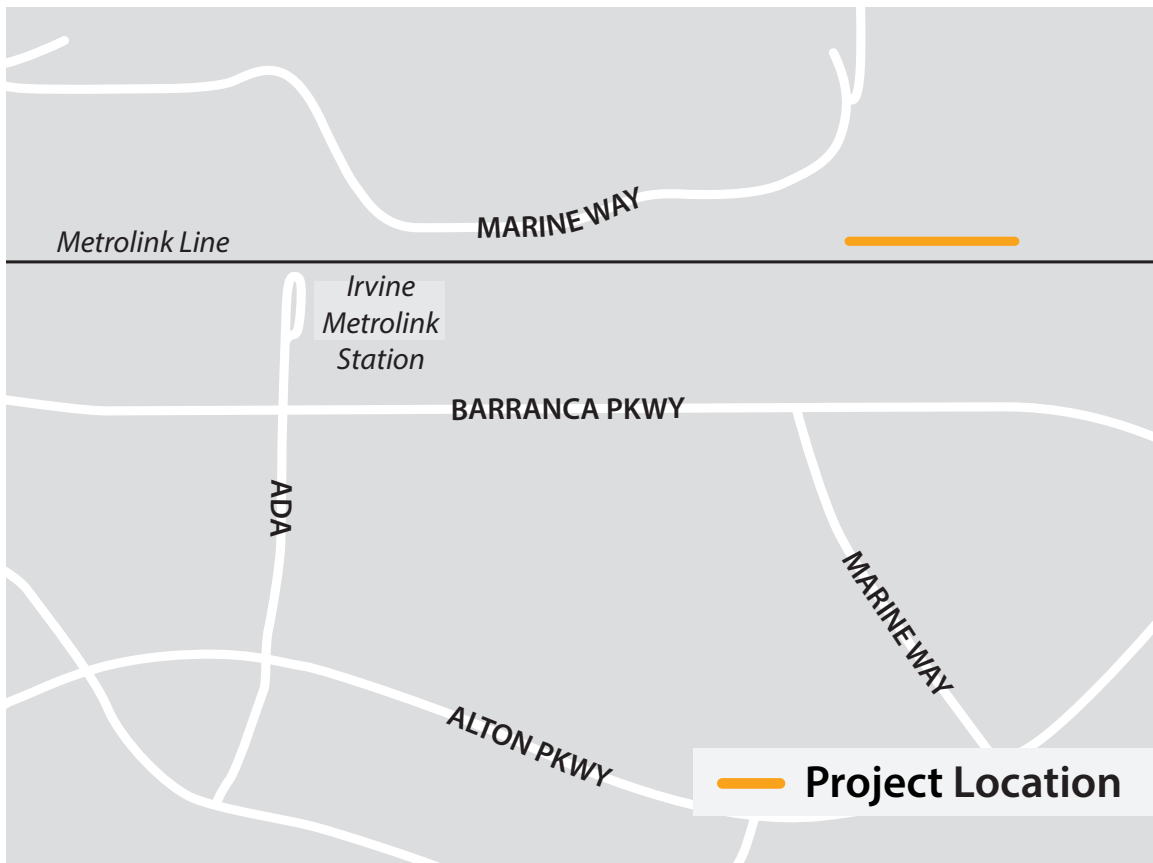


WALNUT AVENUE IMPROVEMENTS





MARINE WAY UNDERCROSSING



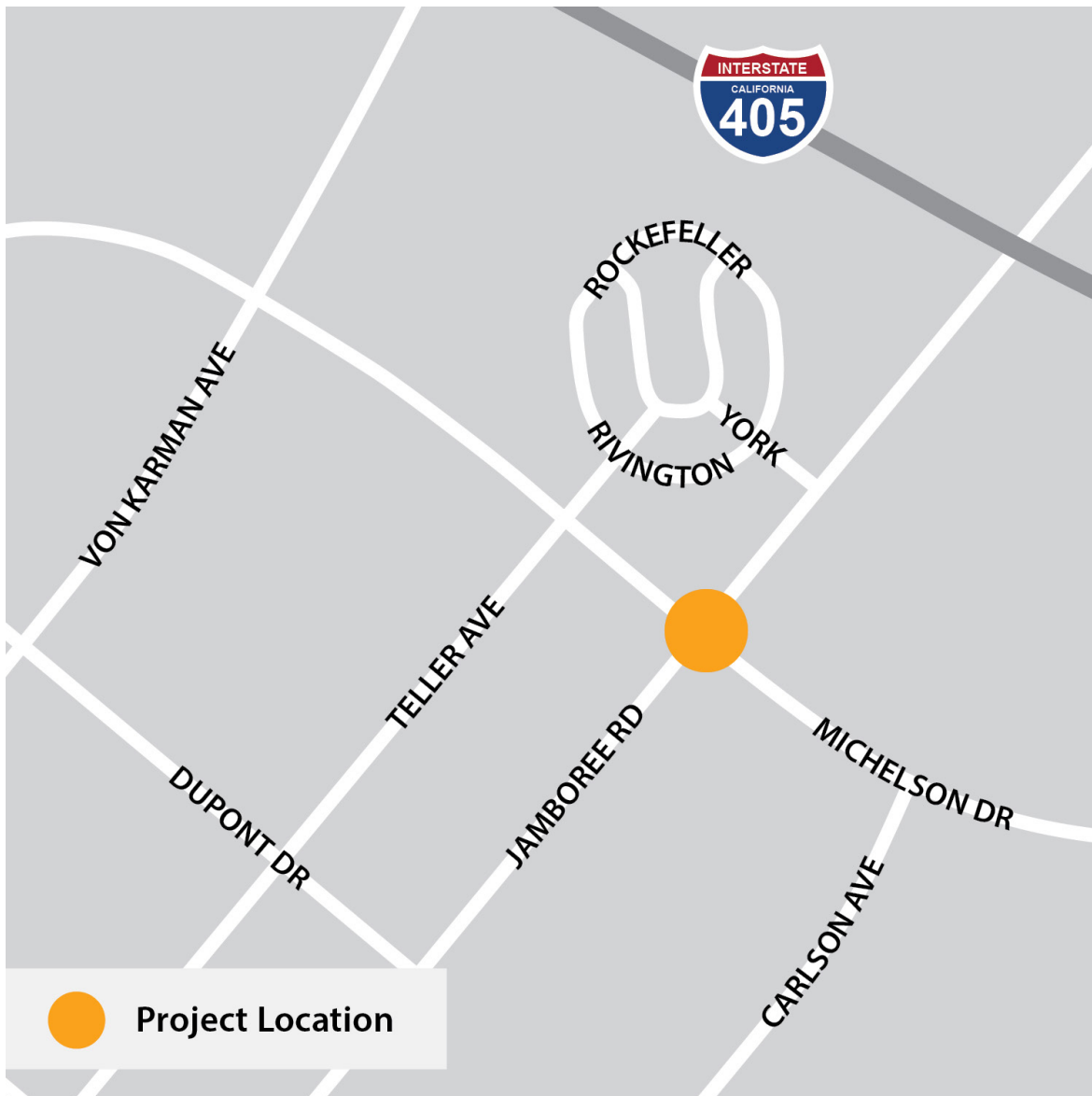


PUBLIC SAFETY EVIDENCE AREA MODIFICATION





JAMBOREE & MICHELSON PEDESTRIAN BRIDGE



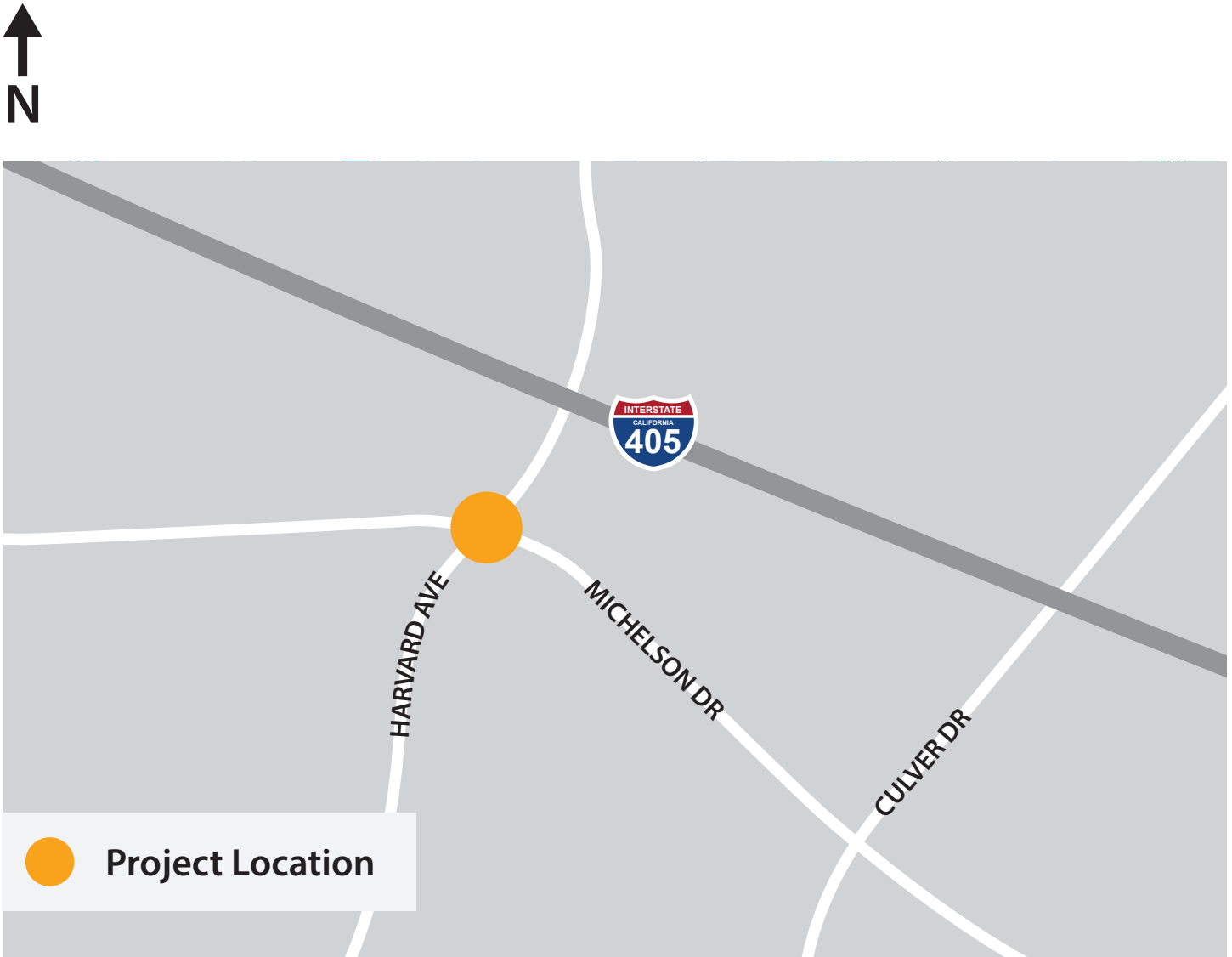


HERITAGE PARK IMPROVEMENTS PROJECT



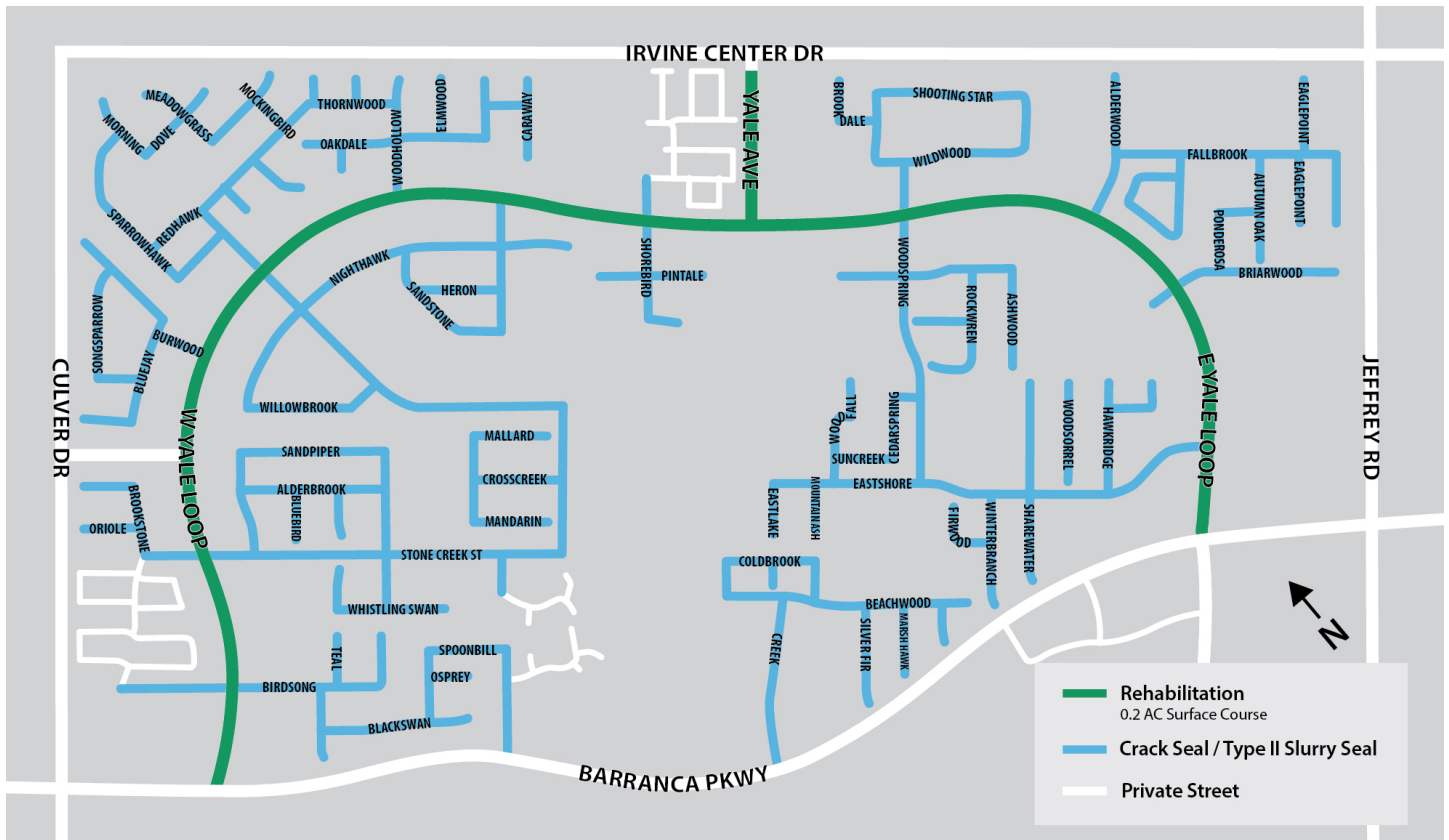


HARVARD/MICHELSON INTERSECTION IMPROVEMENTS





ON CALL STREET REHAB AND SLURRY SEAL — WOODBRIDGE NORTH



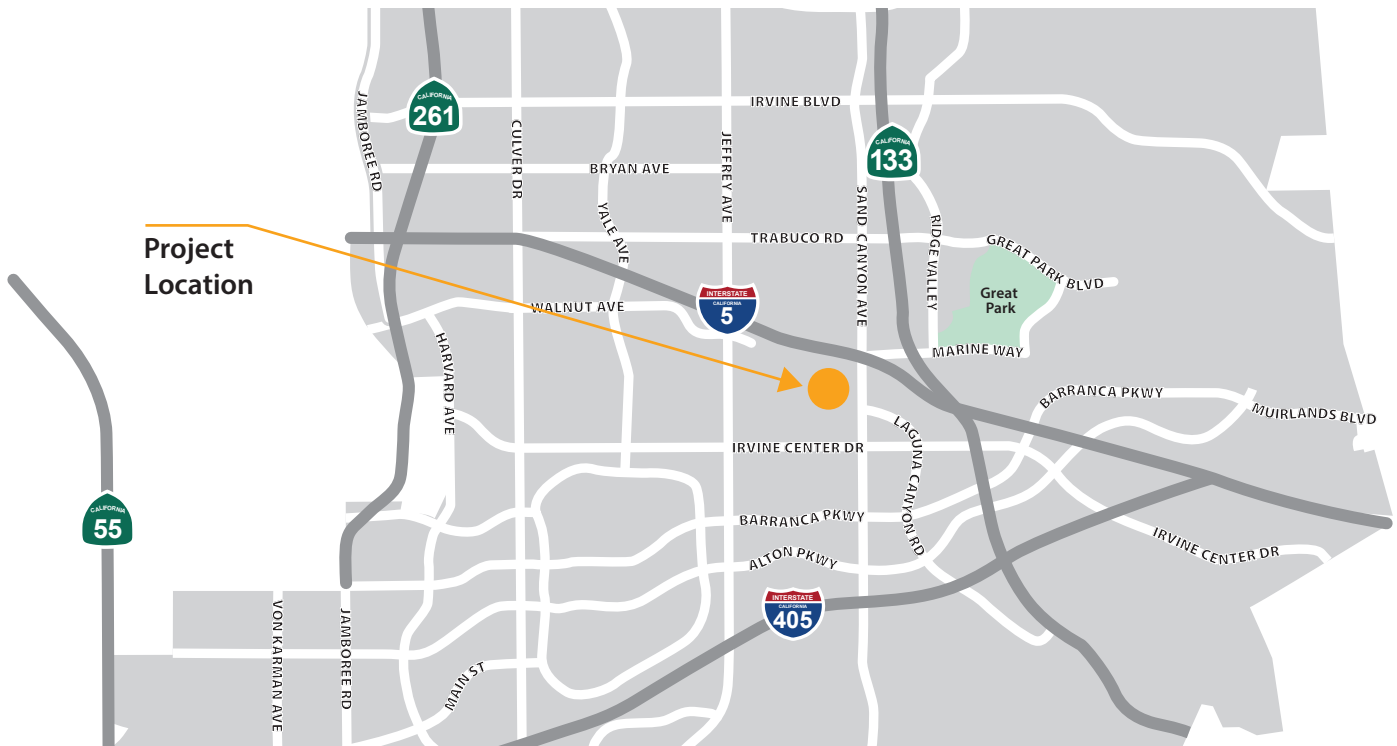


MIKE WARD COMMUNITY PARK PICKLEBALL COURTS





IRVINE ANIMAL CARE CENTER EXPANSION AND RENOVATION PROJECT





JEFFREY OPEN SPACE TRAIL (JOST)/ I-5 BICYCLE AND PEDESTRIAN BRIDGE PROJECT

