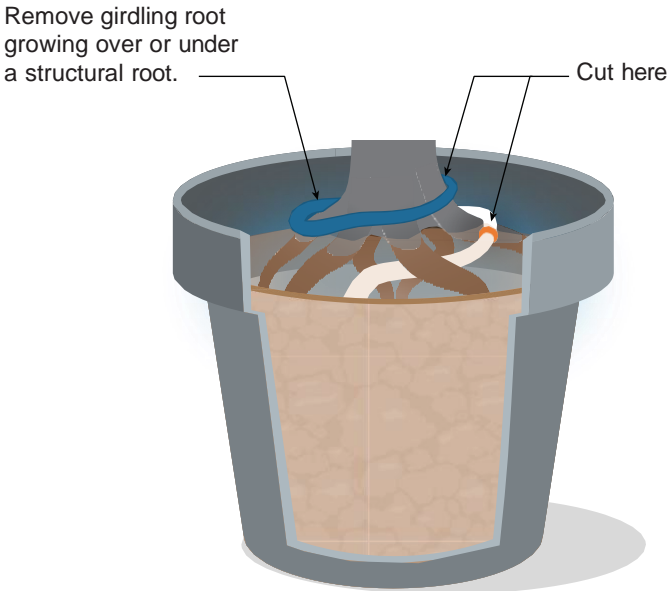
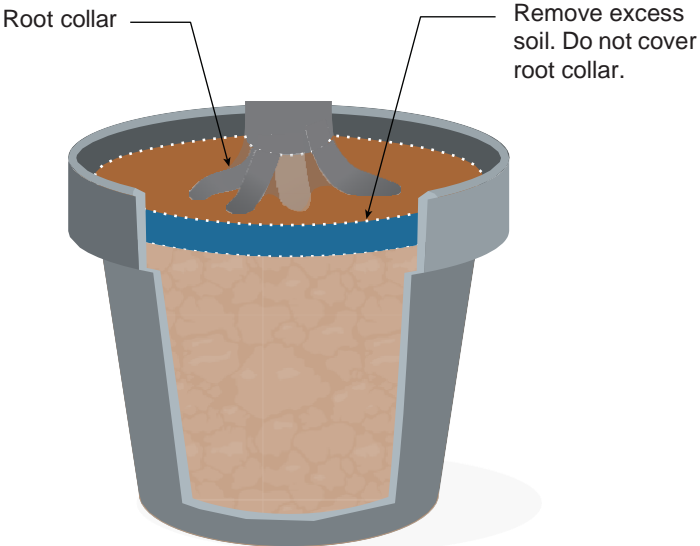
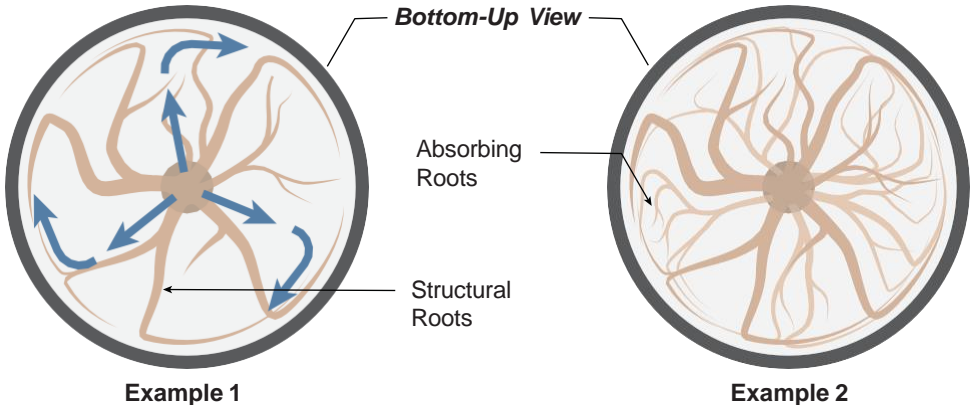


Root Correction for Container Grown Trees



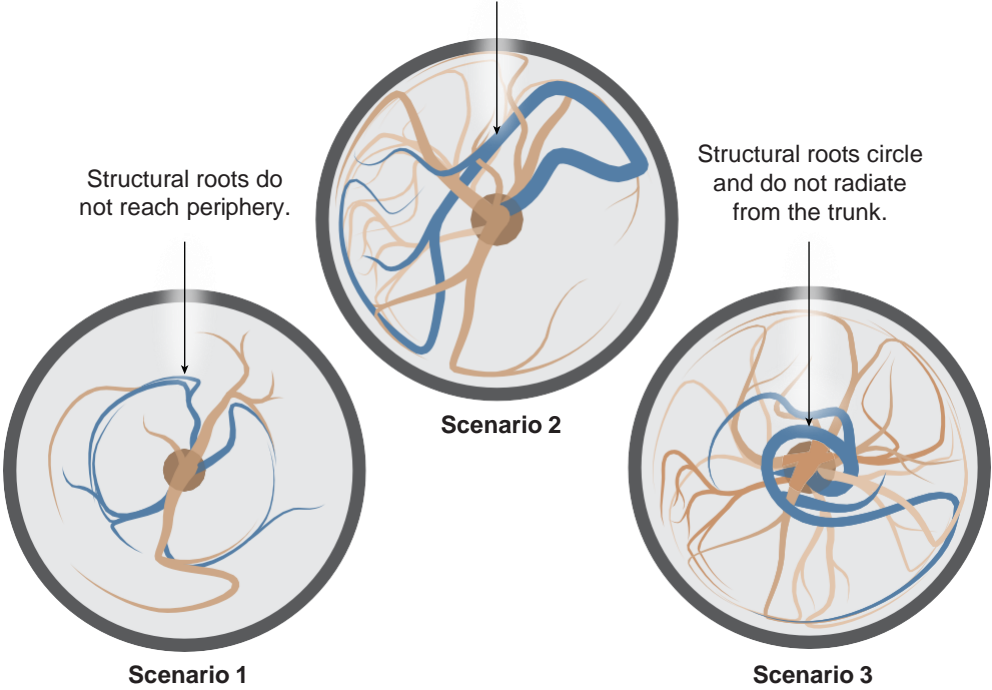
Accept

Roots radiate from trunk and reach each side of root ball without deflecting down or around.



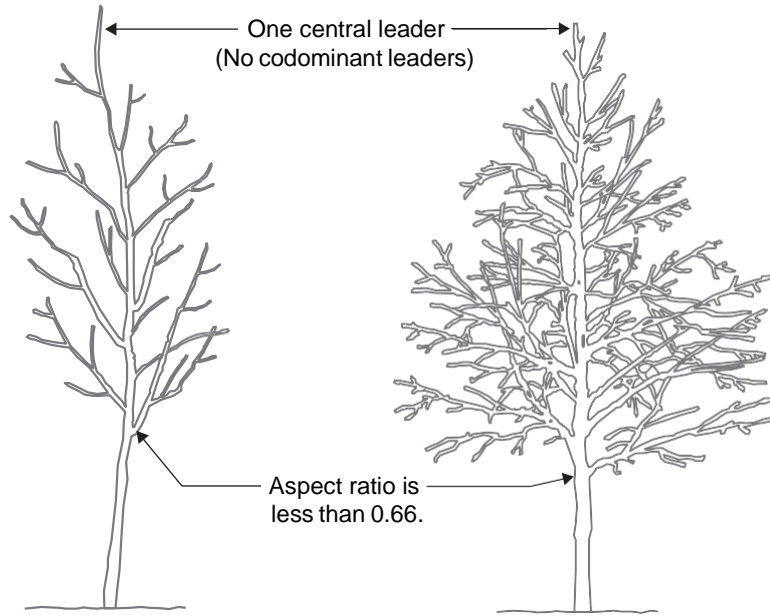
Reject

Structural roots primarily grow to one side or tangent to trunk.

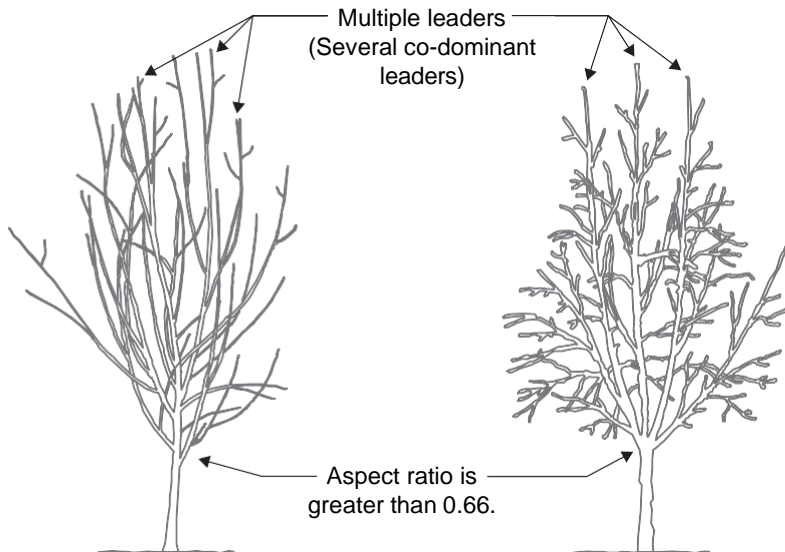


Nursery Stock Selection

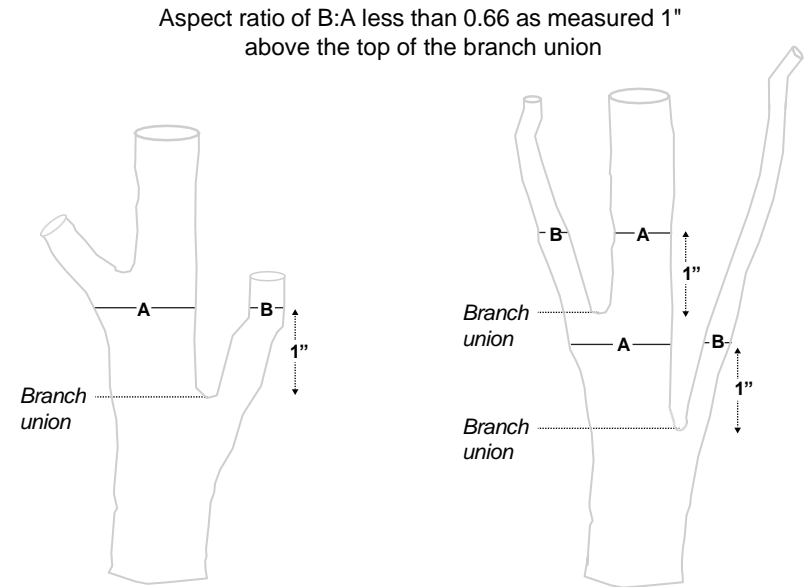
Accept



Reject

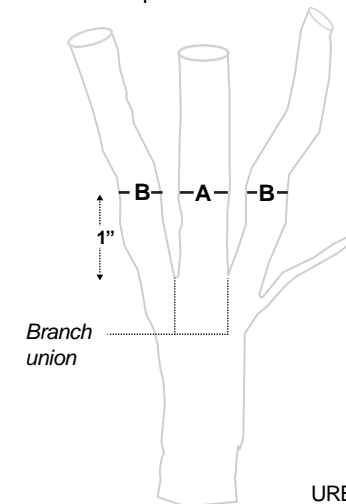


Accept



Reject

Aspect ratio of B:A greater than or equal to 0.66 as measured 1" above the top of the branch union.



URBAN TREE FOUNDATION
ADAPTED BY DUDEK

NOTE: 1. Nursery stock with significant mechanical injury, serious root defects, and trees that show signs of dehydration are to be rejected. 2. Aspect ratio shall be less than 0.66 on all branch unions. Aspect ratio is the diameter of branch (B) divided by the diameter of the trunk (A) as measured 1" above the top of the branch union. 3. Any tree not meeting the crown observations detail may be rejected.