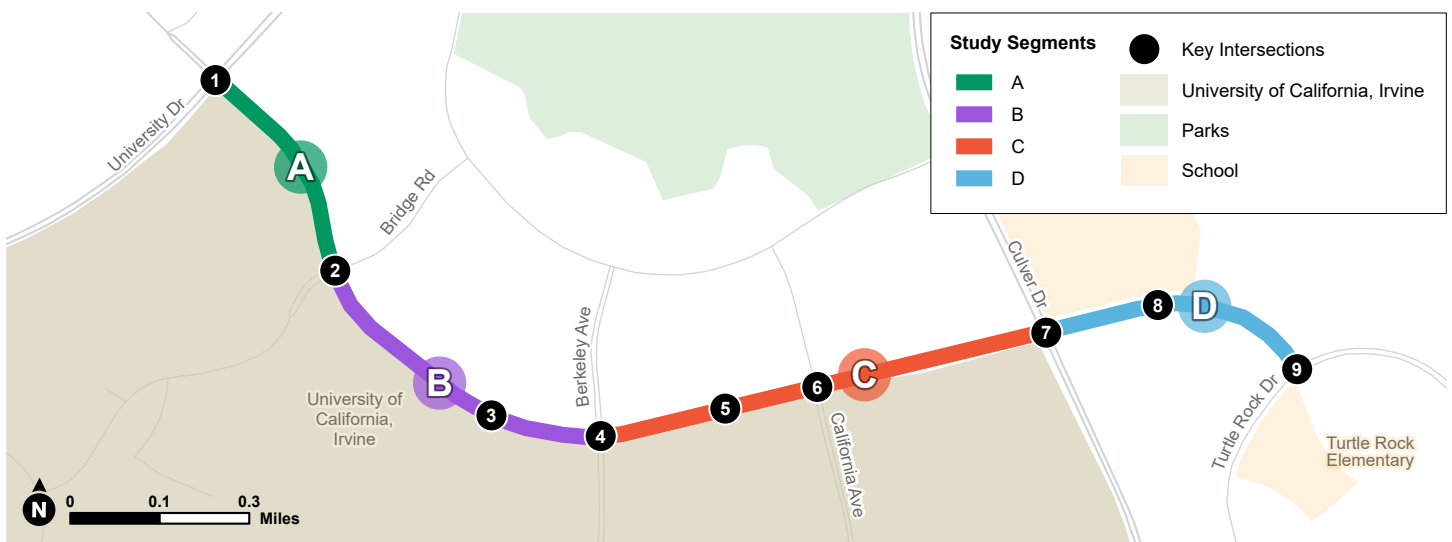


Project Overview

The City of Irvine is exploring ways to improve safety and mobility along Campus Drive between University Drive and Turtle Rock Drive. The Campus Drive Complete Streets & Safety Study will develop and analyze potential enhancements to this critical roadway. Today, the corridor experiences **one of the highest crash rates in the City** and serves areas with **high pedestrian and micromobility activity**. These challenges provide opportunities for innovative solutions and a new street design that balances all road users.



Who is Using Campus Drive?

Campus Drive serves a range of travel modes and trip types. Approximately **12 percent** of vehicle trips are localized, beginning and ending within the adjacent University Town Center or Turtle Rock neighborhoods. With its balanced mixture of land uses and proximity to key educational, commercial, and recreational uses, a higher share of trips are completed by walking, biking, or e-scooter than the City average.

Pedestrian

Along the central portion of the corridor, nearly **2,000** pedestrians travel along Campus Drive daily. Major pedestrian generators include University Town Center, Campus Plaza, and University High School. High pedestrian volumes (**300-400 pedestrians in peak hours**) are also observed crossing Campus Drive at nearly all intersections. This crossing activity is also supported by the pedestrian bridge located adjacent to University Town Center. Pedestrian activity is lower along the western portion of the corridor.

Bike/E-Scooter

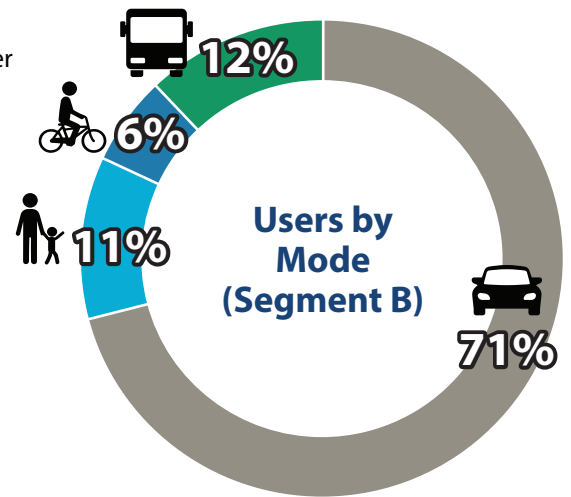
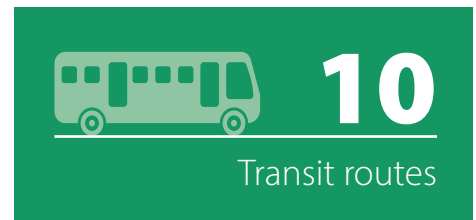
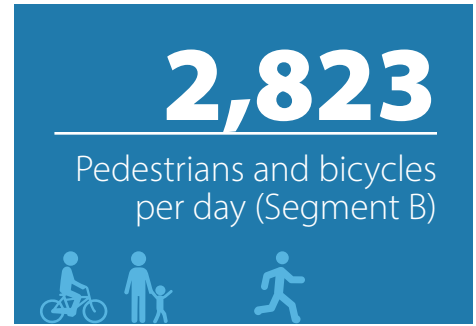
Approximately **900 bicyclists and e-scooter riders** travel along Campus Drive daily between Berkeley Avenue and Cornell. Currently, Class II striped bicycle lanes are provided in both directions along the entire corridor. Bicyclists and e-scooter riders are also frequently observed using the sidewalk due to a lack of separated on-street facilities.

Vehicles

Vehicle traffic is the predominant mode of travel along Campus Drive. Traffic volumes are highest between University Drive and Bridge Road, approaching **20,000 vehicles** on a typical weekday. Approximately three percent of all vehicles are trucks.

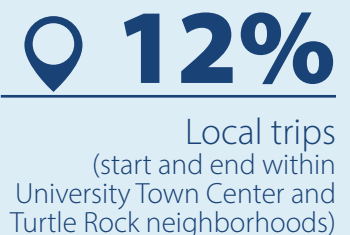
Transit

Campus Drive is served by **five** Orange County Transportation Authority (OCTA) bus routes and **five** Anteater Express bus routes operated by UC Irvine. These routes connect the corridor to the adjacent university campus, other Irvine neighborhoods, and regional transportation routes including Metrolink.



Travel Patterns

Streetlight big data provided insight on travel patterns and trip behavior along the corridor. Approximately **60 percent** of vehicle trips are 10 miles or less, with nearly **10 percent** being less than 2 miles. The primary trip purpose is "**Non-Home-Based Trips**," with nearly 50 percent of trips not starting from or going to home. Just **13 percent** of trips are commute "Home-to-Work" or "Work-to-Home" trips.



Population & Community Context

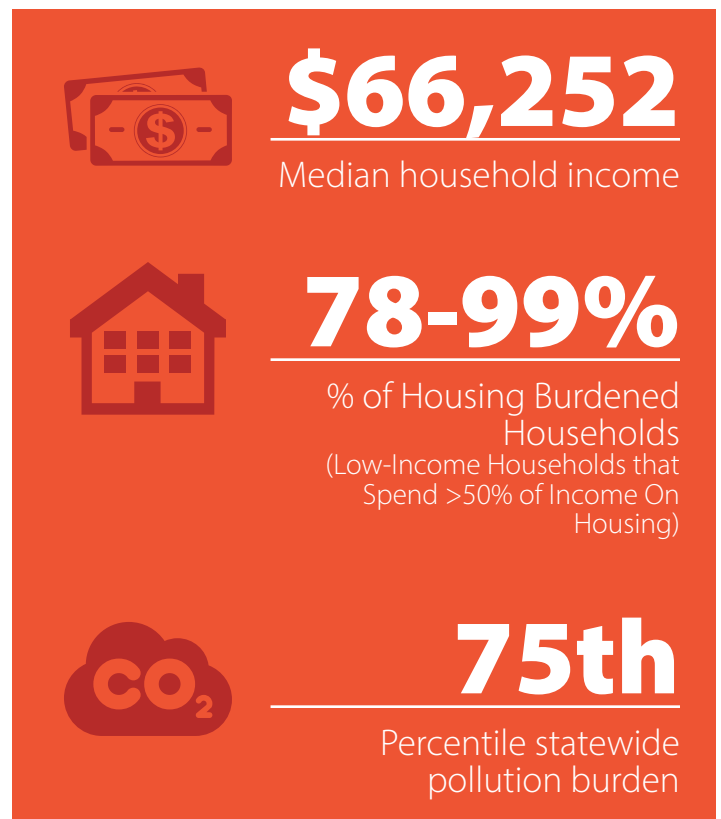
Campus Drive supports a high level of daily activity, serving residents, workers, and students from surrounding neighborhoods and the broader region. This mix of uses creates consistent travel demand throughout the day and highlights the need to accommodate a variety of trip types and travel modes.



Equity Data

The study corridor is adjacent to several Priority Equity Communities, which are census tracts in the Southern California region that have greater concentrations of populations that have been historically marginalized and are susceptible to inadequate outcomes based on several socioeconomic factors.

- The study corridor serves **low-income communities** with several neighborhoods ranking in the 90th percentile statewide for housing burden and 70th percentile or more for poverty.
- The California Healthy Places Index (HPI) indicates the area immediately north of the study, from University Drive to Berkeley Avenue/East Peltason Drive have an **HPI score** in the 11th percentile. The rest of the Study area ranges from the 30th to 40th percentile.



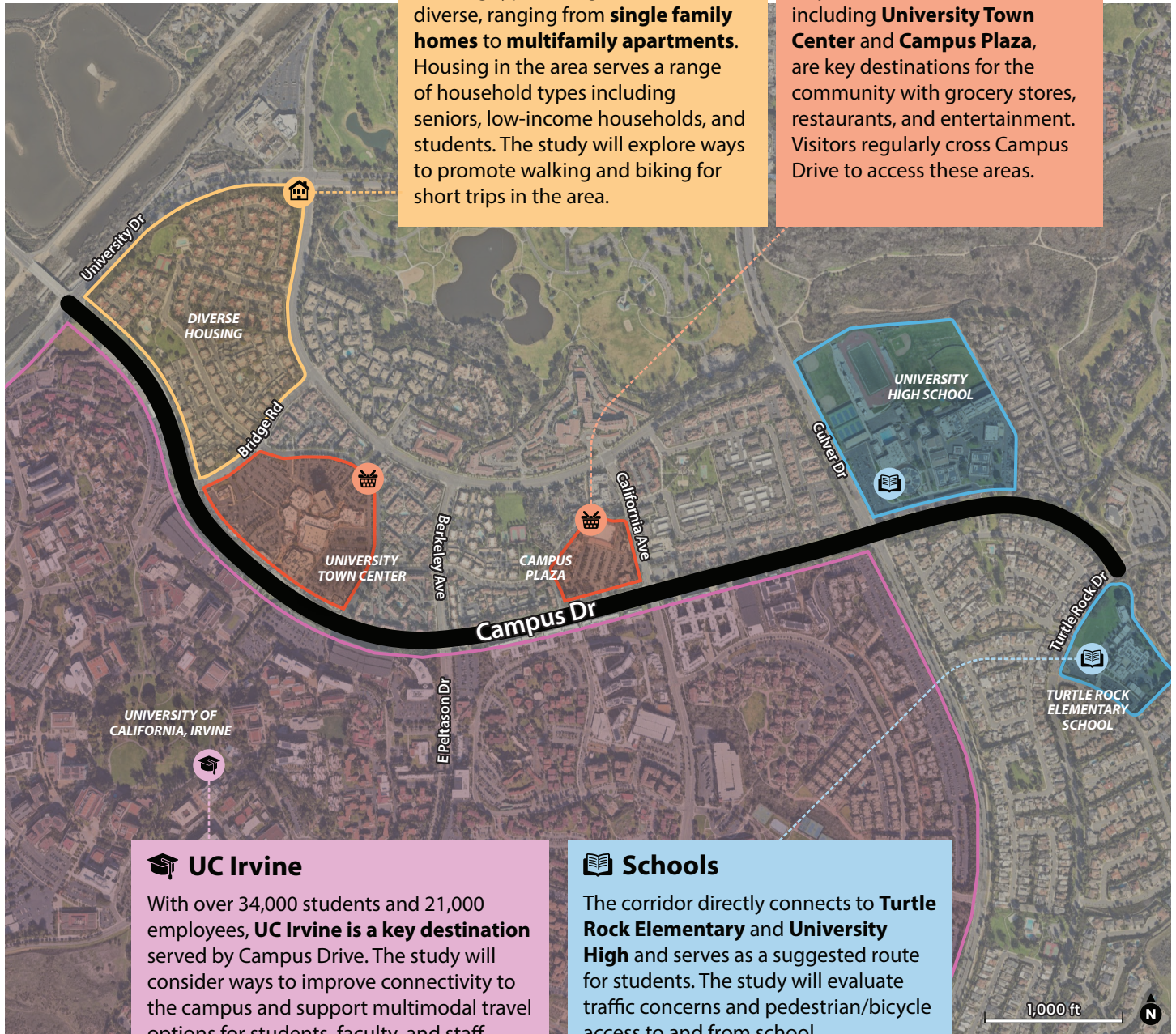
Land Use Context

Housing

Housing types along the corridor are diverse, ranging from **single family homes** to **multifamily apartments**. Housing in the area serves a range of household types including seniors, low-income households, and students. The study will explore ways to promote walking and biking for short trips in the area.

Commercial Centers

Major commercial centers, including **University Town Center** and **Campus Plaza**, are key destinations for the community with grocery stores, restaurants, and entertainment. Visitors regularly cross Campus Drive to access these areas.



UC Irvine

With over 34,000 students and 21,000 employees, **UC Irvine is a key destination** served by Campus Drive. The study will consider ways to improve connectivity to the campus and support multimodal travel options for students, faculty, and staff.

Schools

The corridor directly connects to **Turtle Rock Elementary** and **University High** and serves as a suggested route for students. The study will evaluate traffic concerns and pedestrian/bicycle access to and from school.



How to Get Involved

Visit [URL](#) or scan the QR code to learn more.