



# PUBLIC WORKS & SUSTAINABILITY

## MONTHLY CONSTRUCTION

### PROJECTS IN THE CITY OF IRVINE

MAY 2026

#### CITY PROJECTS

### 1. ANNUAL STREET REHABILITATION AND SLURRY SEAL – ORCHARD HILLS PAVEMENT REHABILITATION AND CLASS IV BIKE WAY



The Annual Street Rehabilitation and Slurry Seal project in the Orchard Hills neighborhood involves slurry seal, cold milling, roadway excavation and paving, construction of a Class IV protected bike lane; signing and striping, and adjustments

to Irvine Ranch Water District and other utility facilities. The purpose of the project is to improve roadway surface quality, enhance safety for all road users, provide a protected bike way and extend the life of the pavement. Temporary lane closures may occur intermittently between 7 a.m. and 5 p.m., alternate routes are suggested. The project is anticipated to be completed summer 2026. Construction is inspected by Public Works & Sustainability staff.

#### UPDATE

This past month — due to weather — cold milling, roadway excavation, and paving were postponed until June. In the coming month, the contractor will prepare for a June project start.

### 2. ANNUAL CONCRETE IMPROVEMENT PROJECT – WOODBURY NEIGHBORHOOD

The Annual Concrete Improvement project in the Woodbury neighborhood includes the replacement and repair of concrete curbs, gutters, ramps, and sidewalks, as well as adjustments to utility facilities. The goal of this project is to



enhance accessibility, improve pedestrian safety, and elevate overall walkability within the community in compliance with the Americans with Disabilities Act. Intermittent lane closures may occur between 9 a.m. and 3 p.m. Motorists are encouraged to use alternate routes when possible. The project is anticipated to be completed by spring 2026. All construction activities are inspected by Public Works & Sustainability staff.

#### UPDATE

This past month, the contractor began reconstruction of sidewalks, curb ramps, and driveways, and will continue these improvements in the upcoming month.

### 3. CIVIC CENTER A WING 3rd FLOOR TENANT IMPROVEMENTS

This project is to provide tenant improvements (TI) to the A Wing 3rd floor of City Hall for the Public Safety Department. The TI includes a large conference room, new and modified offices, new flooring, new HVAC registers, new electrical components to tie

City of Irvine, Public Works & Sustainability Department  
1 Civic Center Plaza, Irvine, CA 92606  
For questions or additional information: 949-724-5546

ATTACHMENT 1

## CITY PROJECTS (CONTINUED)



into the existing system, and retrofitting of the existing fire sprinkler and alarm system to accommodate the new floor plan. Construction is expected to last through spring 2026. All construction activities are inspected by Public Works & Sustainability staff.

### UPDATE

This past month, framing, HVAC duct installation, electrical, flooring, and ceiling were complete. The project is anticipated to reach substantial completion by the end of the month. Next month, the team will focus on punch list completion, with furniture delivery scheduled May 5, followed by final closeout activities.

## 4. JAMBOREE & MAIN INTERSECTION ENHANCEMENTS



The Jamboree & Main Intersection project includes modifications to the alignment and medians at the intersection to address congestion when approaching I-405. Work includes replacing asphalt pavement, excavation, concrete curb, gutter, ramps,

driveways, sidewalk, traffic signal modifications, landscape and adjusting other utilities involved. Intermittent lane closures may occur between 9 a.m. and 3 p.m. Motorists are encouraged to use alternate routes when possible. The project is anticipated to be completed by winter 2026. All construction activities are inspected by Public Works & Sustainability staff. Work is scheduled to begin in late February.

### UPDATE

This past month, the contractor continued procurement for traffic signal poles, and the City issued a Notice to Proceed for April 13. Next month, the contractor expects to begin work on concrete medians and utility adjustments along Main Street.

## 5. IRVINE BUSINESS COMPLEX SIDEWALK IMPROVEMENTS

The Irvine Business Complex (IBC) project includes construction of ADA-compliant sidewalks and driveways throughout the IBC area where none currently exist. Work locations include the intersections at McGaw Avenue and Daimler Street, the cul-de-sac at Cartwright Road, and Noyes Avenue. Construction is expected to last through spring 2026. All construction activities are inspected by Public Works & Sustainability staff.

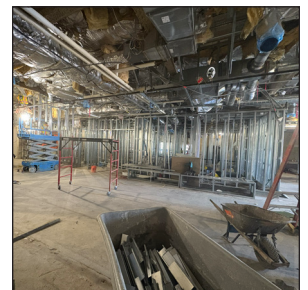


### UPDATE

This past month, the contractor continued grading, utility adjustments, and sidewalks repairs at Cartwright Road and Gillette Avenue. Next month, the contractor expects to continue sidewalk repairs, landscaping, and utility adjustments along Gillette Avenue and Hale Avenue.

## 6. PUBLIC SAFETY LOCKER ROOM EXPANSION

The Public Safety Locker Room Expansion project will expand and renovate the existing locker room on the first floor of City Hall A-wing. Work includes tenant, mechanical, electrical, and plumbing (MEP) improvements. The project is expected to be completed in summer 2026, with construction inspected by Public Works & Sustainability staff, supported by Building & Safety.



### UPDATE

This past month, the contractor completed wall framing for the men's and women's locker rooms and substantially completed ceiling MEP components to begin locker installation. This coming month, the contractor will install restroom accessories and continue locker installation.

## CITY PROJECTS (CONTINUED)

### 7. ANNUAL STREET REHABILITATION AND SLURRY SEAL – WALNUT AND DEERFIELD NEIGHBORHOOD



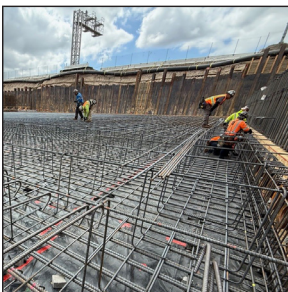
The Annual Street Rehabilitation and Slurry Seal project in the Walnut Area neighborhood — including College Park, The Colony, Deerfield, and Hearthstone — involves slurry seal, cold milling, roadway excavation and paving, concrete curb,

gutter, ramps, and sidewalk work; signing and striping, and adjustments to Irvine Ranch Water District (IRWD) and other utility facilities. The purpose of the project is to improve roadway surface quality, enhance safety for all road users, and extend the life of the pavement. Temporary lane closures may occur intermittently between 9 a.m. and 3 p.m., alternate routes are suggested. The project is anticipated to be complete spring 2026. Construction is inspected by Public Works & Sustainability staff.

#### UPDATE

This past month, the contractor completed Phase 1 of the project, which included concrete improvements such as sidewalks, curb ramps, and driveways. In the coming month, the contractor will continue with slurry seal operations.

### 8. MARINE WAY UNDERCROSSING



The Marine Way Undercrossing project entails construction of a new grade-separated railroad crossing to connect the north and south segments of Marine Way under the Southern California Regional Rail Authority (SCRRA) railroad right-of-way.

Additionally, a below grade channel that relocates the existing Borrego Channel, will be installed under the SCRRA railroad right-of-way south of the proposed

undercrossing. The project is anticipated to be completed spring 2027. Construction is inspected by Public Works & Sustainability staff.

#### UPDATE

This past month, the contractor completed the Borrego Channel box. The Marine Way Grade Separation box invert was also completed, and the contractor began setting reinforcing steel and forms for the east and center walls. Verizon continued relocating conflicting facilities, and Kinder Morgan began relocation of their 16" oil line. This coming month, the contractor will install jacking equipment for the Borrego Channel box push and continue construction of the Marine Way Grade Separation concrete box structure.

### 9. JAMBOREE & MICHELSON PEDESTRIAN BRIDGE

The Jamboree & Michelson Pedestrian Bridge project includes construction of a 175-foot-long bridge traversing Jamboree Road at Michelson Drive. The bridge features structural stainless steel, elevators, glass curtain walls, and decorative



Corian cladding. Temporary and/or permanent lane closures may occur intermittently throughout the project's timeline. Advance notices and detour signs will be provided to alert motorists of lane closures.

The project is anticipated to be completed summer 2027. Construction is inspected by Public Works & Sustainability staff.

#### UPDATE

This past month, the contractor completed concrete and rebar installation at Abutment 1 (west side of Jamboree). Next month, the contractor will continue excavation and shoring at Abutment 2 (east side of Jamboree).

## CITY PROJECTS (CONTINUED)

### 10. WILLIAM WOOLLETT JR. AQUATICS CENTER EXPANSION & HERITAGE PARK PARKING LOTS



The William Woollett Jr. Aquatics Center Improvements project will add two additional parking lots within the park, as well as an additional competition pool at William Woollett Jr. Aquatics Center. As part of this project, storm drain

improvements, on Escolar Avenue northwest of Irvine High School, were performed when school was not in session. Construction is inspected by Public Works & Sustainability staff.

#### UPDATE

This past month, the project was presented to City Council and a contract was awarded for construction. Next month, the project management team and contractor will prepare for construction to begin in spring 2026.

### 11. HARVARD AVENUE AND MICHELSON DRIVE INTERSECTION IMPROVEMENTS



The Harvard/Michelson Intersection Improvement project includes cold milling, roadway excavation and paving, concrete curb, gutter, curb ramps, driveways, and sidewalk, water quality

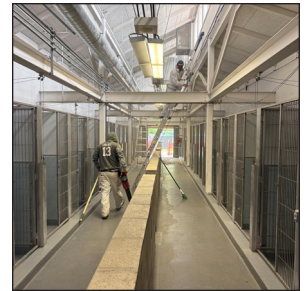
structures, utility protection relocation, signing and striping, traffic signal modification, landscape and irrigation construction, and adjustments of IRWD and other utility facilities. Temporary lane closures may occur intermittently between 9 a.m. and 3 p.m. weekdays. Alternate routes are suggested during the duration of this project. This project is anticipated to be completed summer 2026. Construction is inspected by Public Works & Sustainability staff.

#### UPDATE

This past month, the contractor worked on completing installation of a fire hydrant and storm drain improvements. Next month, the contractor will continue working on constructing curb and gutter and completing the planting on the north slope.

### 12. IRVINE ANIMAL CARE CENTER RENOVATIONS

The Irvine Animal Care Center Renovations project expands and renovates the Irvine Animal Care Center and its site features. Improvements include additions to the administration building, a new clinic building, and an in-fill administration addition. Renovations will be made to the existing administration building, cat/small animals housing, and kennels. Site improvements include modifications to the secured parking area, a new trash enclosure, re-grading, drainage enhancements, entrance modifications, new activity yards, and landscaping. The project is anticipated to be completed winter 2026. Construction is inspected by Public Works & Sustainability staff.



to the existing administration building, cat/small animals housing, and kennels. Site improvements include modifications to the secured parking area, a new trash enclosure, re-grading, drainage enhancements, entrance modifications, new activity yards, and landscaping. The project is anticipated to be completed winter 2026. Construction is inspected by Public Works & Sustainability staff.

#### UPDATE

This past month, the contractor continued landscaping around the new front entry and demolition within the existing buildings as part of Phase II. Next month, renovation work will continue within the existing buildings.

### 13. JEFFREY OPEN SPACE TRAIL (JOST)/ INTERSTATE 5 (I-5) BICYCLE AND PEDESTRIAN BRIDGE

The JOST/I-5 Bicycle and Pedestrian Bridge project includes construction of a Class I bicycle and pedestrian connection of the Jeffrey Open Space Trail. Temporary lane closures may occur intermittently between 9 a.m. and 3 p.m. on City streets and



## CITY PROJECTS (CONTINUED)

along I-5 Freeway. Pedestrian and bicyclist access will be maintained during construction. Advance notices and detour signs will be provided to alert motorists of the lane closures. The project is anticipated to be completed summer 2026. Construction is inspected by Public Works & Sustainability staff.

### UPDATE

This past month, the contractor installed truss railings on the bridge and began construction of the JOST Extension. This coming month, the contractor will continue construction of the JOST Extension Trail along Jeffrey Road from Walnut Avenue to Smoketree and continue installing truss railings on the bridge.

## DEVELOPER PROJECTS

### 14. WALNUT AVENUE – JEFFREY ROAD TO I-5 RAMPS



Irvine Company is improving Walnut Avenue between Jeffrey Road to I-5 Freeway ramps. The project includes roadway widening, trail construction, and traffic signal improvements. Intermittent lane closures may occur between 9 a.m. and 3 p.m.

on weekdays. Access will be maintained for through-traffic. Advance notices and detour signs will be provided to alert motorists of the temporary closures and detour routes. Alternate routes are suggested during the duration of this project. This project is anticipated to be completed fall 2026. Construction is inspected by Public Works & Sustainability staff.

### 15. WATERWORKS WAY – LAGUNA CANYON ROAD TO DISCOVERY



Maruchan is expanding the warehouse along Waterworks Way, from Laguna Canyon Road to Discovery. Temporary lane closures will occur along the southbound side of Waterworks Way, from Laguna Canyon Road to Discovery, between 7 a.m.

and 5:30 p.m. on weekdays. Access will be maintained for through-traffic. Advance notices and detour signs will be provided to alert motorists of lane closures.

Alternate routes are suggested during the duration of this project. This project is anticipated to be completed winter 2025/26. Traffic control is inspected by Public Works & Sustainability staff.

### 16. RED HILL AVENUE, MCGAW AVENUE, AND GILLETTE AVENUE

IBC Red Hill Owner LLC is improving underground water and sewer infrastructures for 17320 Red Hill Avenue at Red Hill Avenue, McGaw Avenue, and Gillette Avenue. Temporary lane closures and restrictions are in place from 9 a.m. to 3 p.m. on weekdays.



Access will be maintained for through-traffic. Advance notices will be provided to alert motorists of lane closures. Alternate routes are suggested during the duration of this project. Construction is scheduled to be completed summer 2026. Construction is inspected by Public Works & Sustainability staff.

### 17. BARRANCA PARKWAY, PACIFICA, AND GATEWAY

Irvine Company is installing underground utilities and street improvements to serve a five-story apartment building located at Gateway/Pacifica and Pacifica/Barranca Parkway. Temporary lane closures and restrictions are in place from 9 a.m. to 3 p.m.



## DEVELOPER PROJECTS (CONTINUED)

on weekdays and Saturdays. Access will be maintained for through-traffic. Advance notices will be provided to alert motorists of lane closures. Alternate routes are suggested during the duration of this project. Construction is scheduled to be completed in winter 2026. Construction is inspected by Community Development staff.

### 18. BRYAN AVENUE – MARKET PLACE TO STATE ROUTE 261 (SR-261) AND EL CAMINO REAL – JAMBOREE ROAD TO SR-261



Irvine Company is improving Bryan Avenue, from Market Place to SR-261 and El Camino Real, from Jamboree Road to SR-261. The project includes median modifications, intersection improvements, sidewalk modifications, upgrading underground

utilities, and traffic signal improvements. Intermittent lane closures may occur between 9 a.m. and 3 p.m. on weekdays. Access will be maintained for through-traffic. Advance notices will be provided to alert motorists of lane closures. Alternate routes are suggested during the duration of this project. This project is anticipated to be completed spring 2026. Construction is inspected by Community Development and Public Works & Sustainability staff.

### 19. BAKE PARKWAY – I-5 TO ROCKFIELD BOULEVARD



FivePoint Communities has started construction of Bake Parkway from I-5 Freeway to Rockfield Boulevard. The project consists of roadway widening, new underground utility infrastructures, and construction of Bake Parkway and Marine Way

intersection. A completion schedule has not been provided. Construction is inspected by Public Works & Sustainability staff.

### 20. MARINE WAY – FROM SKYHAWK TO 2,700 FEET EAST OF SKYHAWK

FivePoint Communities has started construction of Marine Way, from Skyhawk to 2,700 feet east of Skyhawk. Demolition, rough grading, and underground utility construction are completed, and street improvements are in progress. A completion schedule has not been provided. Construction is inspected by Public Works & Sustainability staff.



### 21. JEFFREY ROAD – PORTOLA PARKWAY TO 3,500 FEET NORTH OF PORTOLA PARKWAY

The Irvine Company is extending Jeffrey Road from Portola Parkway to 3,500 feet north of Portola Parkway. The project includes installation of underground utility infrastructure, construction of a pedestrian undercrossing, and roadway improvements.



Public access to Jeffrey Road, north of Portola Parkway is currently unavailable. Advance notices will be provided to alert motorists of lane closures. Alternate routes are suggested during the duration of this project. Construction is inspected by Public Works & Sustainability staff.

### 22. MARINE WAY – ALTON PARKWAY TO BAKE PARKWAY

FivePoint Communities continues to work on Marine Way from Alton Parkway to Bake Parkway. A completion schedule has not been provided. Construction is inspected by Public Works & Sustainability staff.



# UTILITY PROJECTS

## 23. JAMBOREE ROAD – CAMPUS DRIVE TO FAIRCHILD ROAD



Southern California Edison is undergrounding electrical infrastructures in Jamboree Road between Campus Drive and Fairchild Road. Intermittent lane closures may occur between 7 a.m. and 5 p.m. on weekdays. Access will be maintained

for through-traffic. Advance notices and detour signs will be provided to alert motorists of the temporary closures. Alternate routes are suggested during the duration of this project. This project is anticipated to be completed fall 2026. Construction is inspected by City of Newport Beach, and City of Irvine staff will monitor local traffic.

## 24. BARRANCA PARKWAY AND DISCOVERY INTERSECTION



Southern California Edison is upgrading existing underground infrastructures at Barranca Parkway and Discovery intersection. Intermittent lane closures may occur between 9 a.m. and 3 p.m. on weekdays. Temporary K-rail may be

installed to protect motorists and construction workers. Access will be maintained for through-traffic. Advance notices will be provided to alert motorists to the lane closures. This project is anticipated to be complete spring 2026. Construction is inspected by Public Works & Sustainability staff. Alternate routes are suggested during the duration of this project.

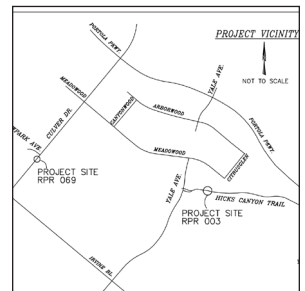
## 25. IRVINE BOULEVARD – FAIRBANKS TO PARKER



Southern California Edison is upgrading existing underground infrastructures in Irvine Boulevard between Fairbanks and Parker. Intermittent lane closures may occur between 9 a.m. and 3 p.m. on weekdays. Access will be maintained for through-traffic. Advance notices and detour signs will be provided to alert motorists of the temporary closures. Alternate routes are suggested during the duration of this project. This project is anticipated to be complete spring 2026. Construction is inspected by Public Works & Sustainability staff.

## 26. HICKS CANYON TRAIL – CULVER DRIVE TO PORTOLA PARKWAY

IRWD is removing existing pressure reducing stations in Hicks Canyon Trail between Culver Drive and Portola Parkway. Intermittent trail closures may occur between 9 a.m. and 3 p.m. on weekdays. Advance notices and detour signs will be provided to alert trail users of the temporary closures. Alternate routes are suggested during the duration of this project. This project is anticipated to be completed spring 2026. Construction is inspected by IRWD, OC Parks, and Public Works & Sustainability staff.



## 27. SEWER SIPHON IMPROVEMENT PROJECT

IRWD is rehabilitating the existing sewer inverted siphons to improve the structural integrity and conveyance performance at University Drive/Harvard Avenue, University Drive/San Diego Creek Channel, Michelson Drive/Riparian View, Jamboree Road/Barranca Channel, Jeffrey Road/San Diego Creek

## UTILITY PROJECTS (CONTINUED)



Channel, and Sand Canyon Avenue/San Diego Creek Channel. Access will be maintained for through-traffic. San Diego Creek trail, adjacent to the project site, may be closed intermittently. Advance notices and detour signs will be provided to alert motorists

and trail users of the temporary closures. Alternate routes are suggested during the duration of this project. This project is anticipated to be complete spring 2026. Construction is inspected by IRWD and Community Development staff.

### 28. JEFFREY ROAD – IRVINE CENTER DRIVE TO WALNUT AVENUE

Southern California Edison is upgrading electrical transmission infrastructure on Jeffrey Road between Irvine Center Drive and Walnut Avenue. Intermittent lane closures on Jeffrey Road and Walnut Trail closures may occur from 9 a.m. to 3 p.m. on weekdays. Access will be maintained for through-traffic. Advance notice and detour signs will alert motorists and trail users to temporary closures. Alternate routes are recommended during this project. This project is anticipated to be completed in summer 2026. Construction is inspected by Public Works & Sustainability staff.



## OTHER AGENCIES

### 29. INTERSTATE 5 – I-405 TO SR-55



Caltrans is improving I-5, from I-405 to SR-55. The project will add one regular lane in each direction of the freeway, new auxiliary lanes between Culver Drive and Jamboree Road in the northbound direction, and between Jeffrey Road and Sand Canyon Avenue

in the southbound direction. The project will also improve ramp configurations on select interchanges and restripe the carpool lanes. Weeknight lane closures may occur between 10 p.m. and 5 a.m. Intermittent freeway ramp closures may occur. Advance notices will be provided to alert motorists to the closures and detour signs will be posted. Alternate routes are suggested during the duration of this project. The project is anticipated to be completed winter 2029. Construction is inspected by Caltrans, and City staff will monitor local traffic.

### 30. INTERSTATE 405 – I-5 TO SR-55

Caltrans is improving I-405, from I-5 to SR-55. The project will add auxiliary lanes, construct retaining walls, and upgrade freeway ramps and pedestrian ADA ramps. Weeknight lane closures may occur between 10 p.m. and 5 a.m. Intermittent

freeway ramp closures may occur. Advance notices will be provided to alert motorists to the closures and detour signs will be posted. Alternate routes are suggested during the duration of this project. The project is anticipated to be completed summer 2026. Construction is inspected by Caltrans, and City staff will monitor local traffic.



## UTILITY PROJECTS (CONTINUED)

### 31. STATE ROUTE 133 – IRVINE CENTER DRIVE TO I-405



Caltrans is improving the southbound lanes on SR-133 from Irvine Center Drive to I-405. The project includes construction of new drainage facilities, guard rails, and auxiliary lane within Caltrans right-of-way. Weeknight lane closures may occur between 10 p.m. and 5 a.m. San Diego

Creek trail will be closed between Pacifica and Alton Parkway. Advance notices will be provided to alert motorists of lane closures, and trail detour signs will be posted. Alternate routes are suggested during the duration of this project. This project is anticipated to be completed summer 2026. Construction is inspected by Caltrans, and City staff will monitor local traffic.

### 32. STATE ROUTE 55 – I-405 TO I-5

Orange County Transportation Authority (OCTA), in cooperation with Caltrans, is improving SR-55, between I-405 and I-5. This project will add one regular lane and one carpool lane in each direction of SR-55, between I-405 and I-5, improving mobility for commuters within Orange County. Intermittent on-ramp/off-ramp closures along SR-55 may occur. OCTA and Caltrans will provide advance notices to alert motorists and local businesses of closures. Alternate routes are suggested during the duration of this project. This project is anticipated to be completed fall 2026. Construction is inspected by Caltrans, and City staff will monitor local traffic.

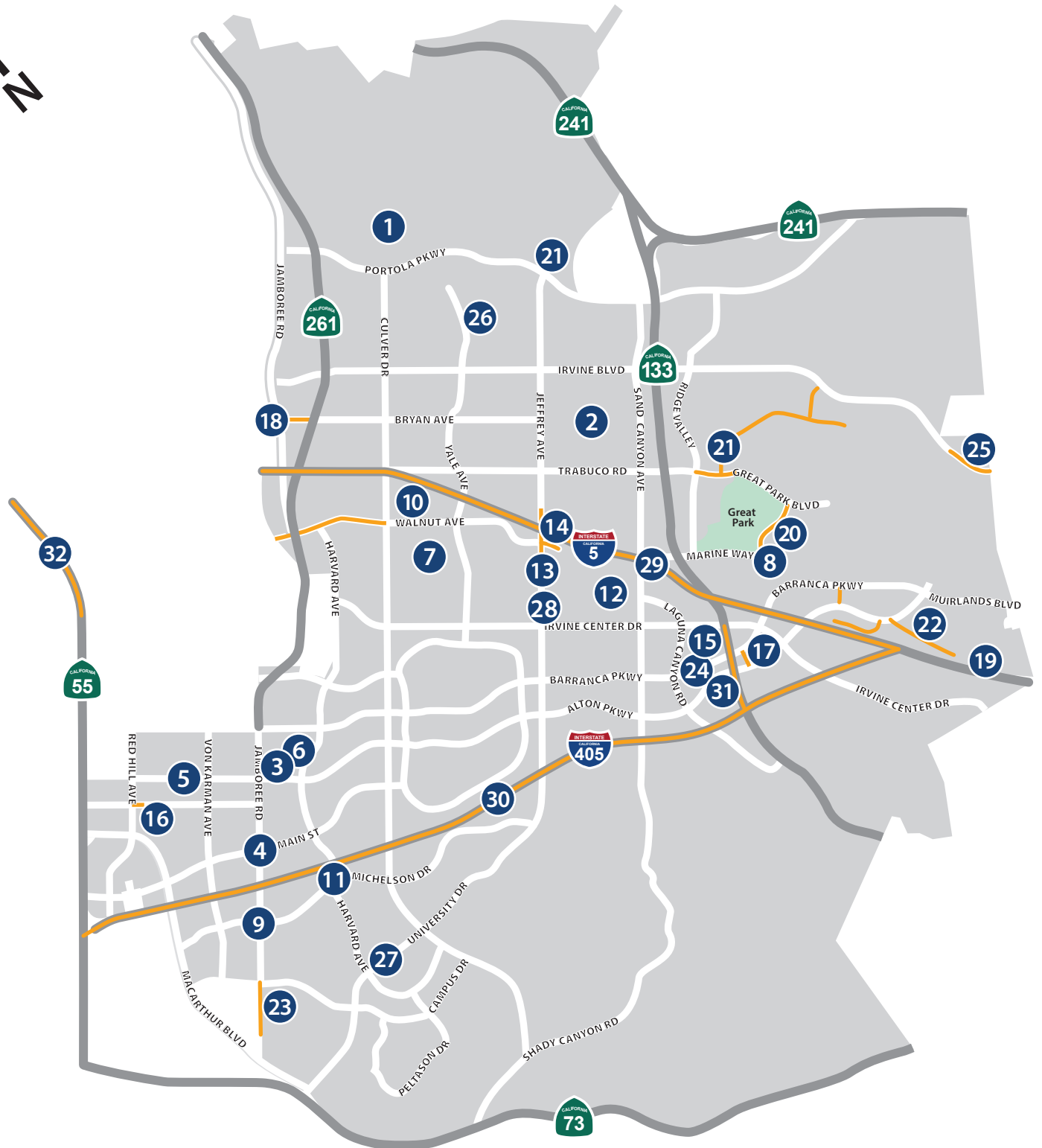


## COMPLETED PROJECTS

- **Technology Drive west of Alton Parkway, and Ada – Alton Parkway to Barranca Parkway:** IRWD has completed improvements to the existing recycled water infrastructure on Technology Drive west of Alton Parkway and on Ada from Alton Parkway to Barranca Parkway.
- **Great Park Boulevard – Bosque to Ridge Valley, Beacon – Great Park Boulevard to Carmine, and Carmine – Interval to Magnet:** FivePoint Communities has completed improvements to Great Park Boulevard from Bosque to Ridge Valley; Beacon from Great Park Boulevard to Carmine; and Carmine from Interval to Magnet.
- **Mason Regional Park Trail Improvements:** OC Parks has completed installation of six pedestrian bridges along the trails in Mason Regional Park. The remaining two pedestrian bridges will be completed as part of a future phase.
- **Public Safety Evidence Area Modification:** The City has completed replacement of existing evidence storage shelving with a high-density storage system, along with associated site modifications to support the installation.



# PUBLIC WORKS & SUSTAINABILITY CONSTRUCTION MAP MAY 2026



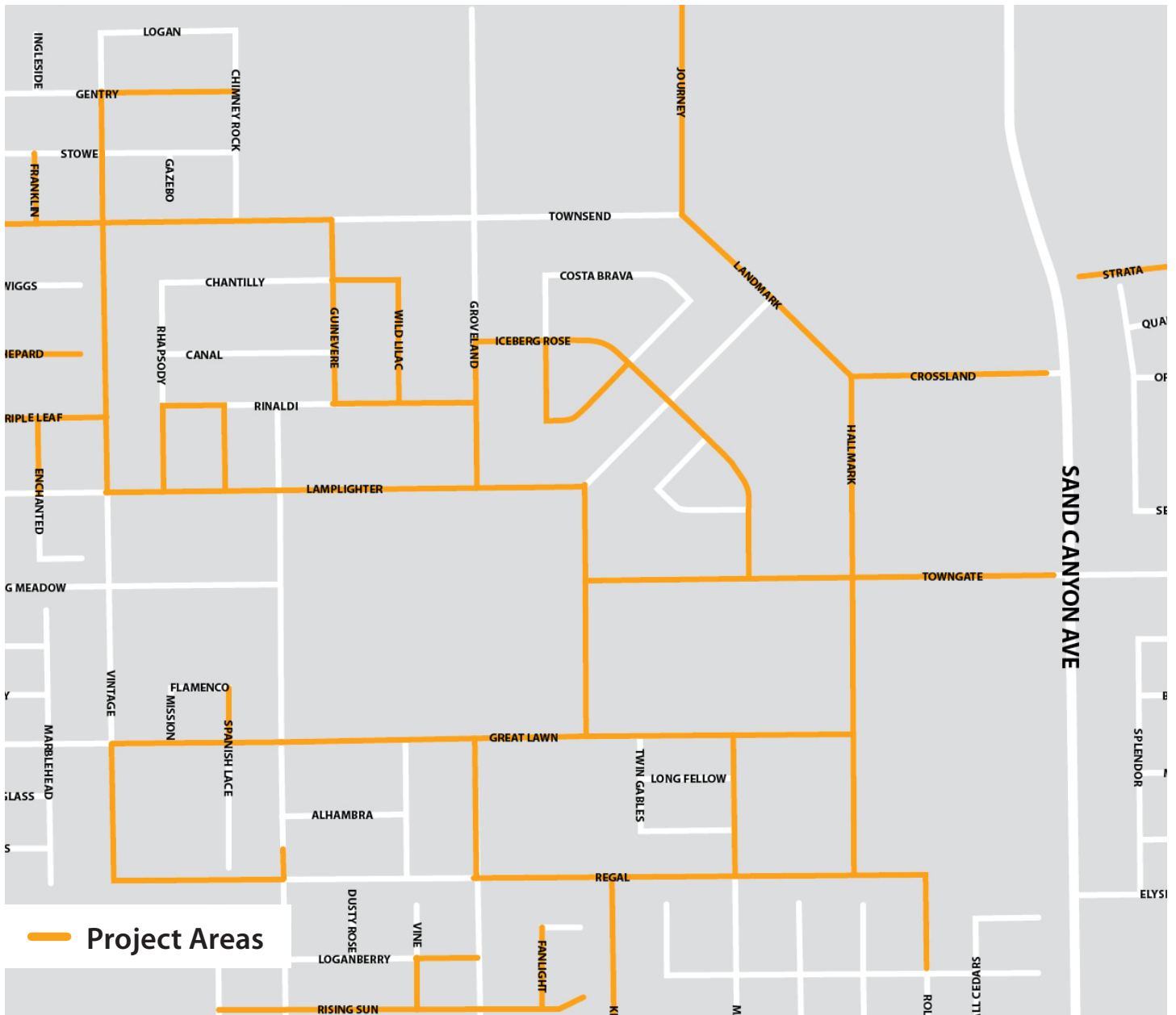


# ANNUAL STREET REHABILITATION AND SLURRY SEAL – ORCHARD HILLS PAVEMENT REHABILITATION AND CLASS IV BIKE WAY





# ANNUAL CONCRETE IMPROVEMENT - WOODBURY NEIGHBORHOOD



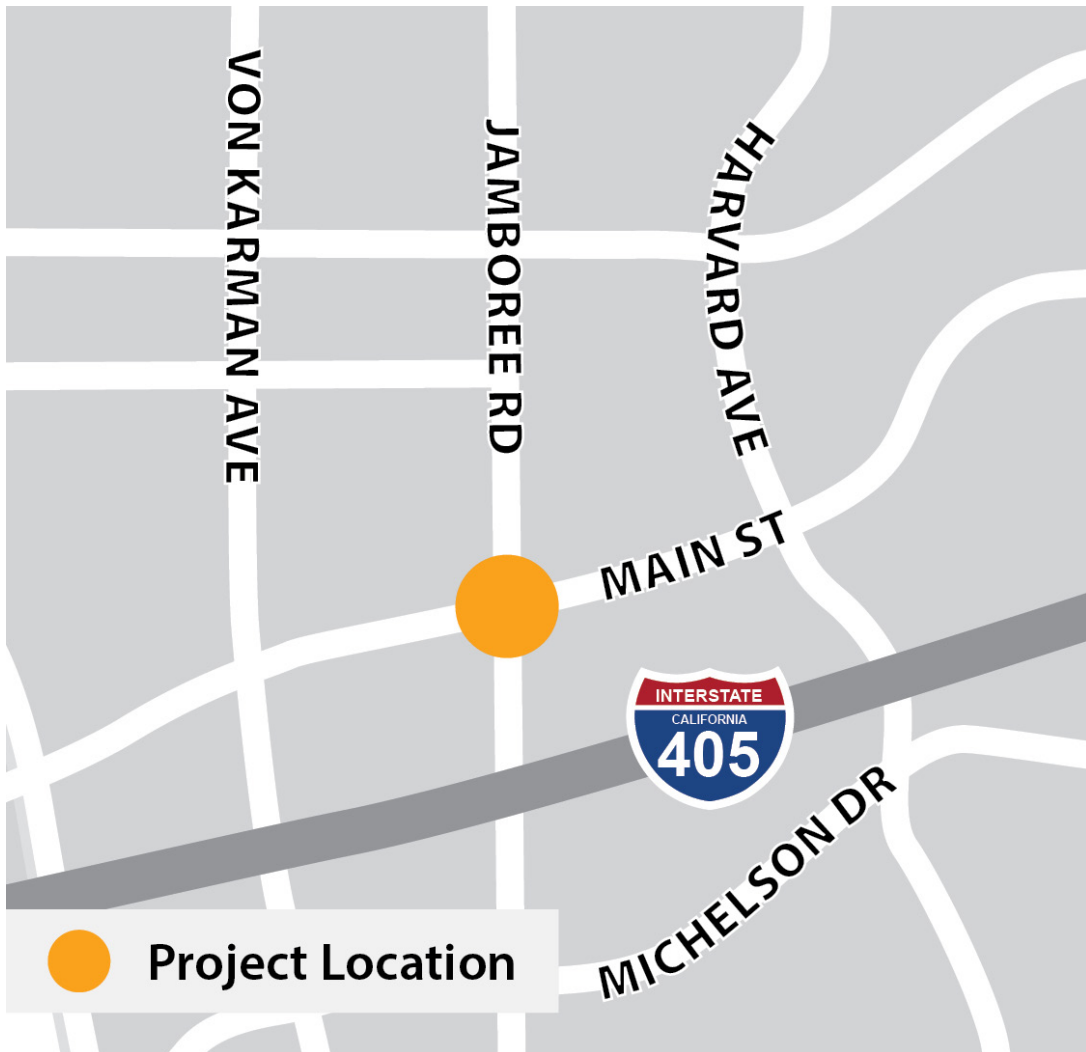


# CIVIC CENTER A WING 3rd FLOOR TI





# JAMBOREE & MAIN INTERSECTION ENHANCEMENTS





# IRVINE BUSINESS COMPLEX IMPROVEMENTS



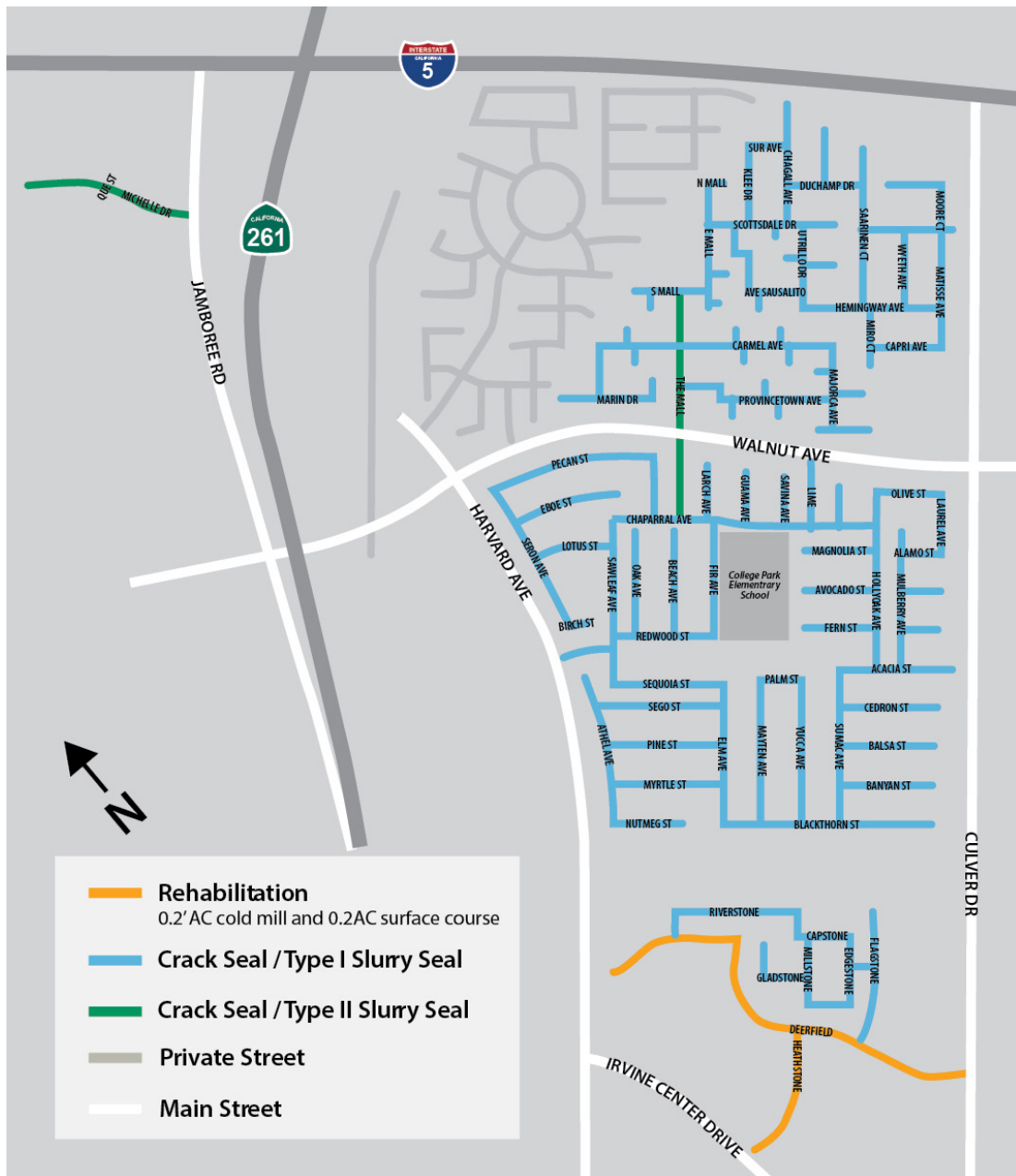


# PUBLIC SAFETY LOCKER ROOM EXPANSION



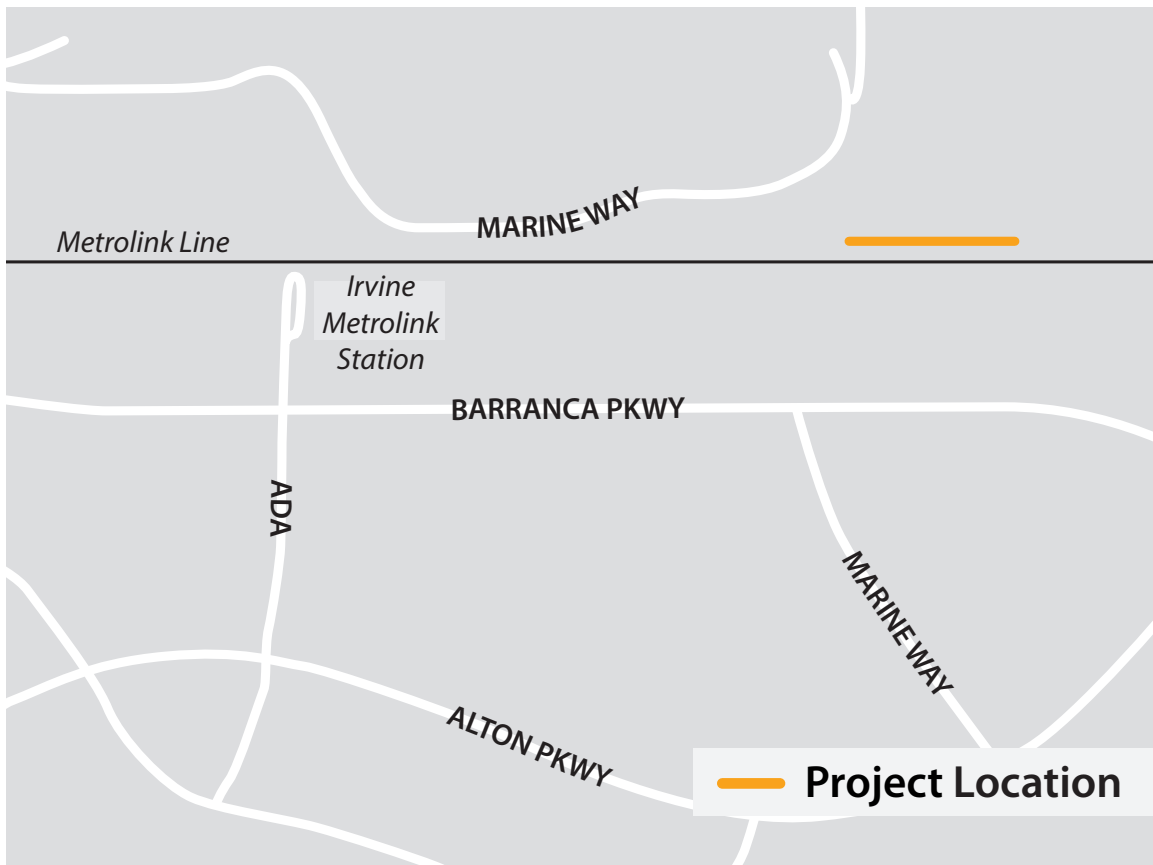


# ANNUAL STREET REHABILITATION AND SLURRY SEAL - WALNUT AND DEERFIELD NEIGHBORHOOD



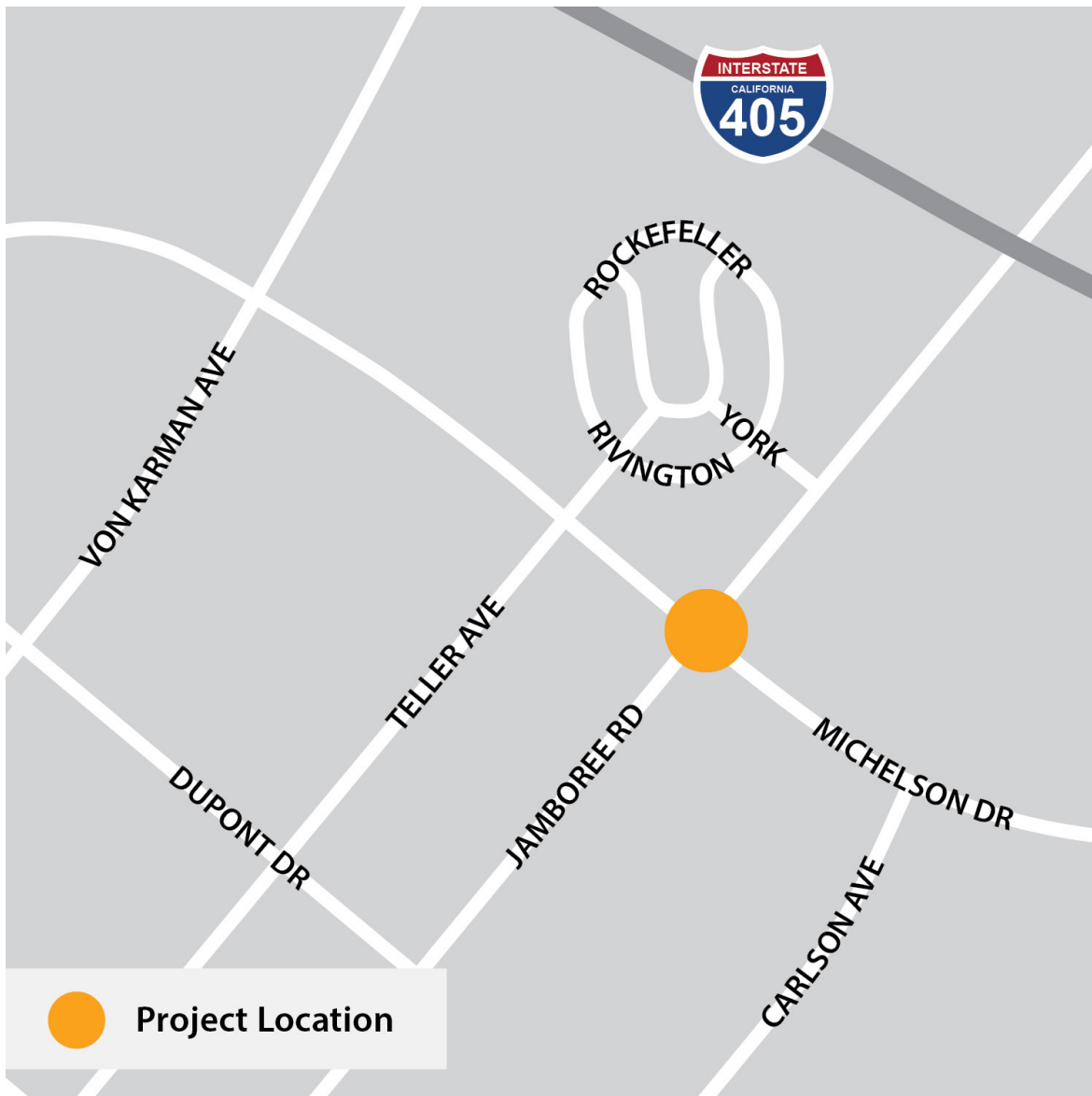


# MARINE WAY UNDERCROSSING





# JAMBOREE & MICHELSON PEDESTRIAN BRIDGE



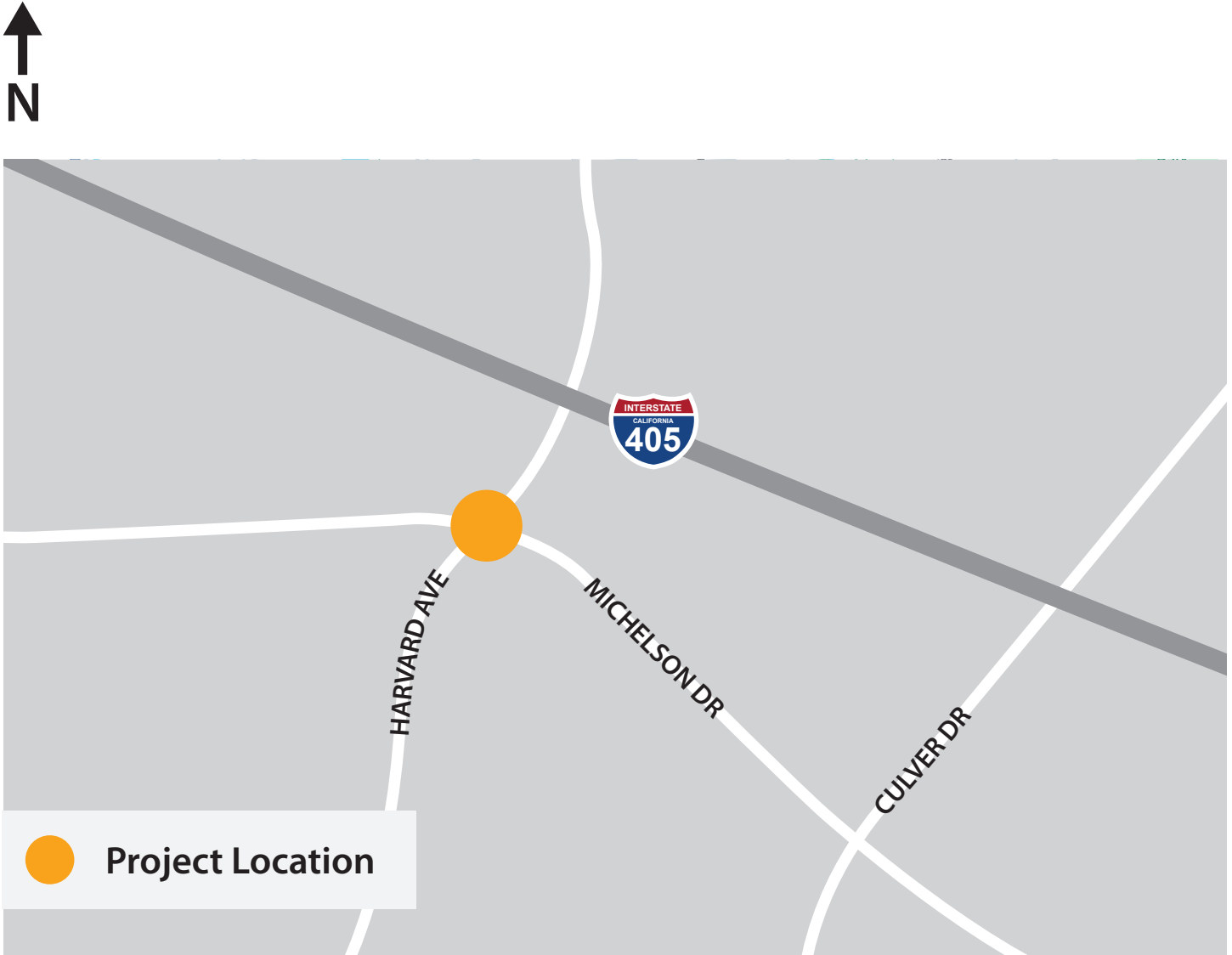


# WILLIAM WOOLLETT JR. AQUATICS CENTER IMPROVEMENTS PROJECT



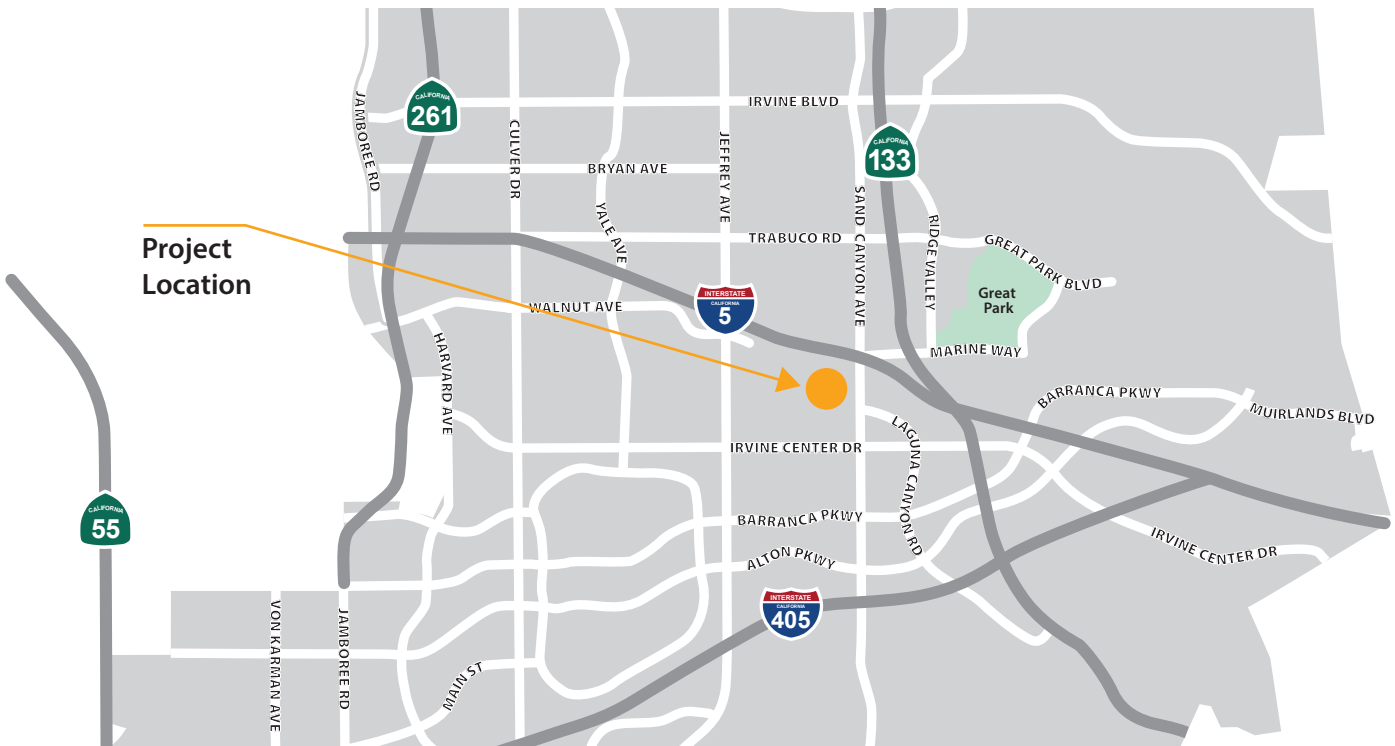


# HARVARD/MICHELSON INTERSECTION IMPROVEMENTS





# IRVINE ANIMAL CARE CENTER EXPANSION AND RENOVATION PROJECT





# JEFFREY OPEN SPACE TRAIL (JOST)/ I-5 BICYCLE AND PEDESTRIAN BRIDGE PROJECT



**Project  
Location**